



[sales@mccallumhinges.com.au](mailto:sales@mccallumhinges.com.au)

[www.mccallumhinges.com.au](http://www.mccallumhinges.com.au)



*Quality Hinges Since 1939*



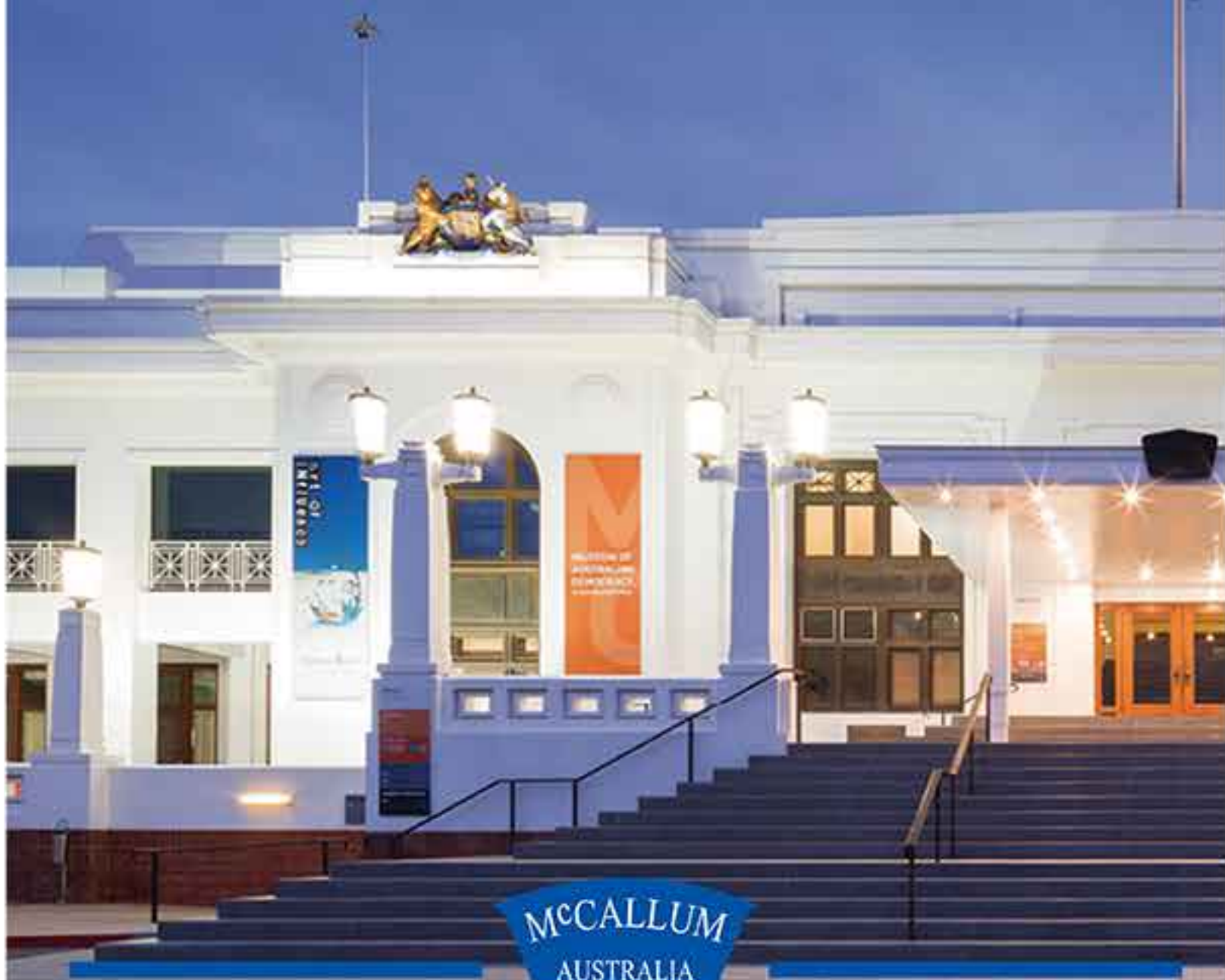
*Quality Hinges Since 1939*



# CONTENTS

A104(A104F) - - - - -	PAGE 1	S235(SB100100PFP) - - - - -	PAGE 54
A114(A104MF) - - - - -	PAGE 2	S236(SB100100SFP) - - - - -	PAGE 55
A124(A104SF) - - - - -	PAGE 3	S239(S100100SFP) - - - - -	PAGE 56
A134(A104-200) - - - - -	PAGE 4	S240(S100150SFP) - - - - -	PAGE 57
A154(A104WF) - - - - -	PAGE 5	S241(S100200SFP) - - - - -	PAGE 58
A105(A105T) - - - - -	PAGE 6	S260 - - - - -	PAGE 59
A115(A105MF) - - - - -	PAGE 7	S264(S801T) - - - - -	PAGE 60
A125(A105SF) - - - - -	PAGE 8	S263(S104S) - - - - -	PAGE 61
A155(A105MWTF) - - - - -	PAGE 9	S201(S102LH) - - - - -	PAGE 62
A165(A67RF) - - - - -	PAGE 10	S202(S102RH) - - - - -	PAGE 63
A166(A67RN) - - - - -	PAGE 11	S203 - - - - -	PAGE 64
A167(A67F) - - - - -	PAGE 12	S271 - - - - -	PAGE 65
A168(A67RT) - - - - -	PAGE 13	S275(S7545) - - - - -	PAGE 66
A169(A67RT) - - - - -	PAGE 14	S278 - - - - -	PAGE 67
A163 - - - - -	PAGE 15	S279 - - - - -	PAGE 68
A107(A107RLF) - - - - -	PAGE 16	S265 - - - - -	PAGE 69
A117(A107RF) - - - - -	PAGE 17	S266 - - - - -	PAGE 70
A127(A107SHF) - - - - -	PAGE 18	S267 - - - - -	PAGE 71
A137 - - - - -	PAGE 19	S268 - - - - -	PAGE 72
A119 - - - - -	PAGE 20	S281 - - - - -	PAGE 73
A129 - - - - -	PAGE 21	S282 - - - - -	PAGE 74
A174(A74HBF) - - - - -	PAGE 22	S283 - - - - -	PAGE 75
A176(A7629) - - - - -	PAGE 23	S284 - - - - -	PAGE 76
A101(A102LHF) - - - - -	PAGE 24	S285 - - - - -	PAGE 77
A102(A102RHF) - - - - -	PAGE 25	S286 - - - - -	PAGE 78
A103(HA103) - - - - -	PAGE 26	S287 - - - - -	PAGE 79
A173(A74LB) - - - - -	PAGE 27	S288 - - - - -	PAGE 80
P435 - - - - -	PAGE 28	S289/S290/S291/S292/293 - - - - -	PAGE 81
P436 - - - - -	PAGE 29	S301/S302/S303/S304/S305/S306 - - - - -	PAGE 82
A140(AB4526) - - - - -	PAGE 30	ALS104 - - - - -	PAGE 83
A141(AB4532) - - - - -	PAGE 31	SPG771 - - - - -	PAGE 84
A142(AB45) - - - - -	PAGE 32	SPG772 - - - - -	PAGE 85
A143(AB4550) - - - - -	PAGE 33	SPG773 - - - - -	PAGE 86
A146(AB46A) - - - - -	PAGE 34	SPG790 - - - - -	PAGE 87
A150(AB50) - - - - -	PAGE 35	PL624 - - - - -	PAGE 88
A151(AB51) - - - - -	PAGE 36	PL623 - - - - -	PAGE 89
A170(AB70) - - - - -	PAGE 37	MC100-304 - - - - -	PAGE 90
AL104 - - - - -	PAGE 38	MC101-304 - - - - -	PAGE 91
AL105LH/AL105RH - - - - -	PAGE 39	SD-5011 - - - - -	PAGE 92
S210(S10060SFP) - - - - -	PAGE 40	SD-5012 - - - - -	PAGE 93
S211(S10060SLP) - - - - -	PAGE 41	SD-5013 - - - - -	PAGE 94
S220(S10075SFP) - - - - -	PAGE 42	SD-5014 - - - - -	PAGE 95
S221(S10075SLP) - - - - -	PAGE 43	SD-5016 - - - - -	PAGE 96
S222(S10075PFP) - - - - -	PAGE 44	SD-5017 - - - - -	PAGE 97
S223(S10075PLP) - - - - -	PAGE 45	SD-5018 - - - - -	PAGE 98
S224(SB10075SFP) - - - - -	PAGE 46	SD-5019 - - - - -	PAGE 99-100
S225(SB10075PFP) - - - - -	PAGE 47	SD-5020 - - - - -	PAGE 101-P102
S226(SB10075SFP) - - - - -	PAGE 48	SD-5022 - - - - -	PAGE 103-P105
S230(S100100SFP) - - - - -	PAGE 49	SD-5023 - - - - -	PAGE 106
S231(S100100SLP) - - - - -	PAGE 50	SD-5024 - - - - -	PAGE 107
S232(S100100PFP) - - - - -	PAGE 51	SD-5001 - - - - -	PAGE 108-109
S233(S100100PLP) - - - - -	PAGE 52	SD-5002/SD-5003 - - - - -	PAGE 110-P112
S234(SB100100SFP) - - - - -	PAGE 53	BFD-T1 - - - - -	PAGE 113-P117

# STAINLESS STEEL HINGES



McCALLUM  
AUSTRALIA

January 2018

# Cover Project: Old Parliament House

Quality Hinges Since 1939

'Old Parliament House' was the house of the Australian parliament from 1927 to 1988. The building was operational on 9 May 1927 and was set to be a temporary base for the Commonwealth Parliament after relocating from Melbourne to the new capital, Canberra. In 1988, the parliament was moved to the newly erected, 'New Parliament House' on Capital Hill.

On 2 May 2008, Old Parliament House was made an Executive Agency of the Department of the Prime Minister and Cabinet. On 9 May 2009, the Executive Agency was renamed the Museum of Australian Democracy at Old Parliament House, reporting to the Special Minister of State. The various rooms and halls also serves as a venue for temporary exhibitions, lectures and concerts.

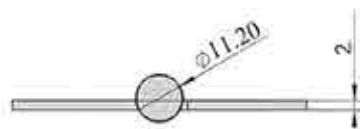
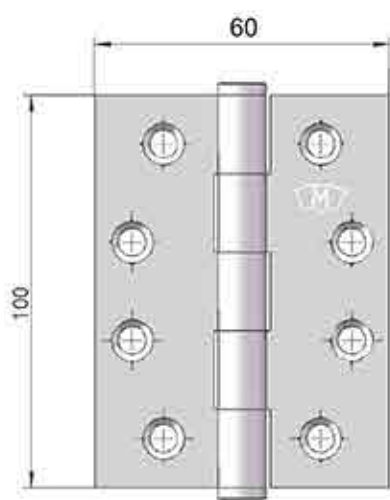
Designed by John Smith Murdoch his assistants from the Department of Works and Railways, the building was originally intended for neither temporary nor permanent use but as a 'provisional' building. The building was designed in the Simplified or "Stripped" Classical Style which was common for Australian government buildings at that time. This means it does not include such classical architectural elements as columns, entablatures or pediments, but does include the orderliness and symmetry associated with neoclassical architecture.

Over the years, millions of people have moved through the building both as workers and guests. It was thus required in the design and construction that all materials and parts were to be of the highest standard - even if it was proposed to only serve for a short time (50 years). With recent renovations, restorations and maintenance, McCallum Australia has been the choice of Hinge supplier for the various applications throughout the building.



## STAINLESS STEEL BUTT HINGE

**Code No. S 210**



### APPLICATION

- Suitable for aluminium and timber doors with aluminium, steel and timber frames.

### SPECIFICATION

- **Material:** Stainless Steel 304 Grade.
- **Pin Dia:** 6.9mm - Stainless Steel 304 Grade.
- **Knuckle:** Round
- **Endcaps:** Pressed-in interference fit. Stainless Steel 304 Grade.
- Stamped with MCallum crest.
- Fixed Pin.

### INSTALLATION GUIDE ONLY

- **Door thickness:** Minimum 30mm.
- When using a door closer, we recommend a minimum of 4 hinges be used, with the top hinge located as high as possible.
- Standard Door: 2040 (H) x 820 (W) - 3 hinges.

### FIXING

- 32mm x 10g stainless steel fasteners for timber (supplied).
- 12mm x M5 stainless steel metal fasteners (supplied).
- Pop rivets are not recommended.
- Not recommended for Bi-Fold door systems.

### FINISH

- Satin finish.

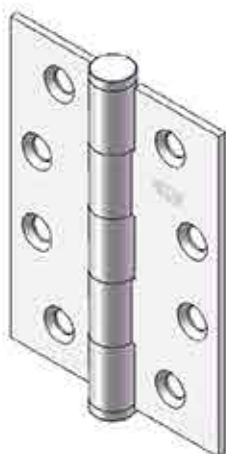
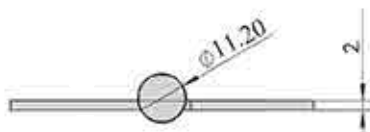
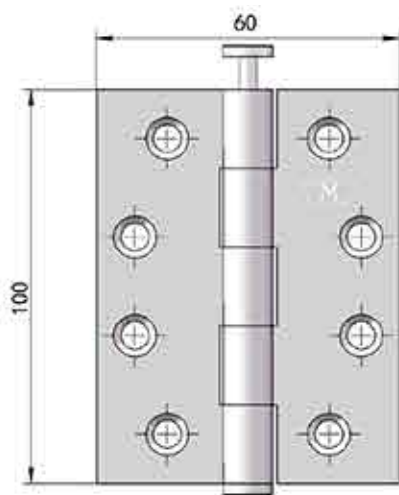
### OLD CODE NO.

- S10060 SFP

**Code No. S 210**

## STAINLESS STEEL BUTT HINGE

Code No. S 211



### APPLICATION

- Suitable for aluminium and timber doors with aluminium, steel and timber frames.

### SPECIFICATION

- **Material:** Stainless Steel 304 Grade.
- **Pin:** 6.9mm - Stainless Steel 304 Grade Punch-Out Pin.
- **Knuckle:** Round
- **Endcaps:** Pressed-in interference fit. Stainless Steel 304 Grade.
- Stamped with McCallum crest.
- Loose Pin.

### INSTALLATION GUIDE ONLY

- **Door thickness:** Minimum 30mm.
- When using a door closer, we recommend a minimum of 4 hinges be used, with the top hinge located as high as possible.
- Standard Door: 2040 (H) x 820 (W) - 3 hinges.

### FIXING

- 32mm x 10g stainless steel fasteners for timber (supplied).
- 12mm x M5 stainless steel metal fasteners (supplied).
- Pop rivets are not recommended.
- Not recommended for Bi-Fold door systems.

### FINISH

- Satin finish.

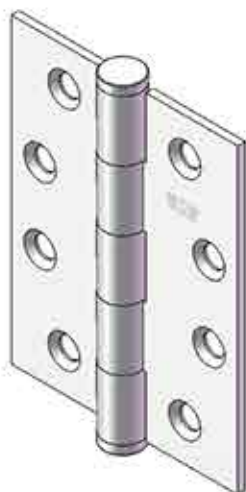
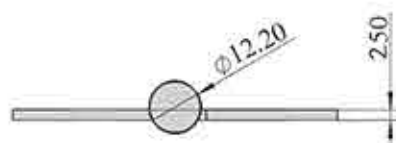
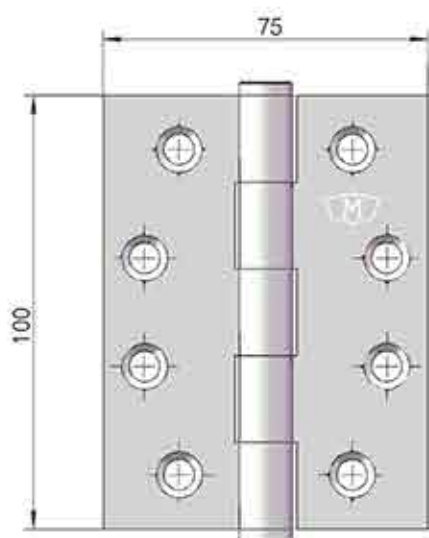
### OLD CODE NO.

- S10060 SLP

Code No. S 211

## STAINLESS STEEL BUTT HINGE

**Code No. S 220**



### APPLICATION

- Suitable for aluminium and timber doors with aluminium, steel and timber frames.

### SPECIFICATION

- **Material:** Stainless Steel 304 Grade.
- **Pin Dia:** 6.9mm - Stainless Steel 304 Grade.
- **Knuckle:** Round
- **Endcaps:** Pressed-in interference fit. Stainless Steel 304 Grade.
- Stamped with McCallum crest.
- Fixed Pin.

### INSTALLATION GUIDE ONLY

- **Door thickness:** Minimum 35mm.
- When using a door closer, we recommend a minimum of 4 hinges be used, with the top hinge located as high as possible.
- Standard Door: 2040 (H) x 820 (W) - 3 hinges.

### FIXING

- 32mm x 10g stainless steel fasteners for timber (supplied).
- 12mm x M5 stainless steel metal fasteners (supplied).
- Pop rivets are not recommended.
- Not recommended for Bi-Fold door systems.

### FINISH

- Satin finish.

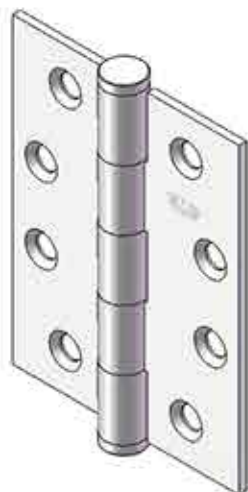
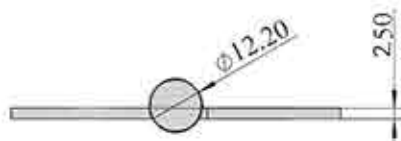
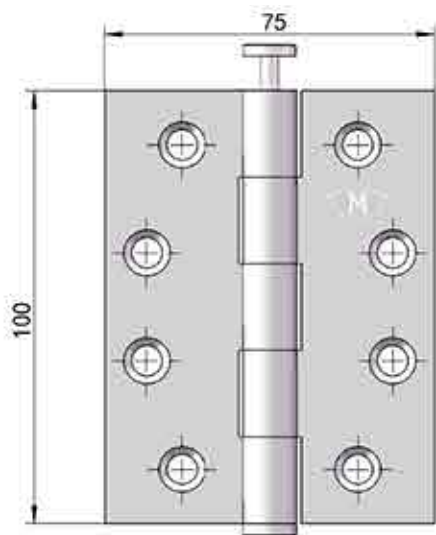
### OLD CODE NO.

- S10075 SFP

**Code No. S 220**

## STAINLESS STEEL BUTT HINGE

**Code No. S 221**



### APPLICATION

- Suitable for aluminium and timber doors with aluminium, steel and timber frames.

### SPECIFICATION

- **Material:** Stainless Steel 304 Grade.
- **Pin:** 6.9mm - Stainless Steel 304 Grade Punch-Out Pin.
- **Knuckle:** Round
- **Endcaps:** Pressed-in interference fit. Stainless Steel 304 Grade.
- Stamped with McCallum crest.
- Loose Pin.

### INSTALLATION GUIDE ONLY

- **Door thickness:** Minimum 35mm.
- When using a door closer, we recommend a minimum of 4 hinges be used, with the top hinge located as high as possible.
- Standard Door: 2040 (H) x 820 (W) - 3 hinges.

### FIXING

- 32mm x 10g stainless steel fasteners for timber (supplied).
- 12mm x M5 stainless steel metal fasteners (supplied).
- Pop rivets are not recommended.
- Not recommended for Bi-Fold door systems.

### FINISH

- Satin finish.

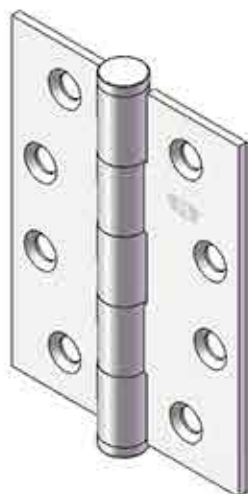
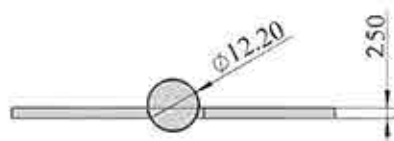
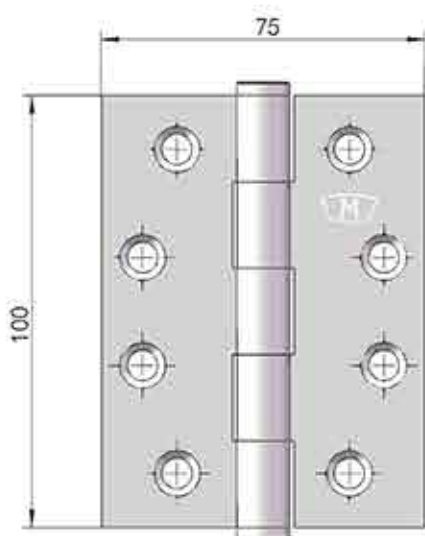
### OLD CODE NO.

- S10075 SLP

**Code No. S 221**

## STAINLESS STEEL BUTT HINGE

**Code No. S 222**



### APPLICATION

- Suitable for aluminium and timber doors with aluminium, steel and timber frames.

### SPECIFICATION

- **Material:** Stainless Steel 304 Grade.
- **Pin Dia:** 6.9mm - Stainless Steel 304 Grade.
- **Knuckle:** Round
- **Endcaps:** Pressed-in interference fit. Stainless Steel 304 Grade.
- Stamped with McCallum crest.
- Fixed Pin.

### INSTALLATION GUIDE ONLY

- **Door thickness:** Minimum 35mm.
- When using a door closer, we recommend a minimum of 4 hinges be used, with the top hinge located as high as possible.
- Standard Door: 2040 (H) x 820 (W) - 3 hinges.

### FIXING

- 32mm x 10g stainless steel fasteners for timber (supplied).
- 12mm x M5 stainless steel metal fasteners (supplied).
- Pop rivets are not recommended.
- Not recommended for Bi-Fold door systems.

### FINISH

- Polished Stainless Steel.

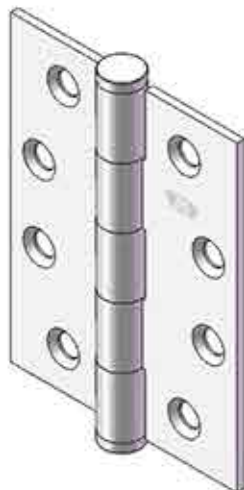
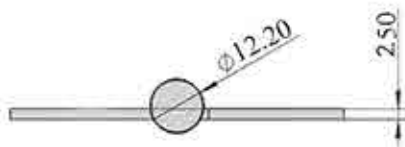
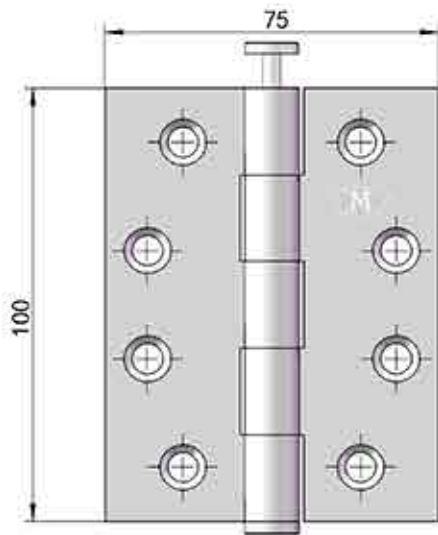
### OLD CODE NO.

- S10075 PFP

**Code No. S 222**

## STAINLESS STEEL BUTT HINGE

**Code No. S 223**



### APPLICATION

- Suitable for aluminium and timber doors with aluminium, steel and timber frames.

### SPECIFICATION

- **Material:** Stainless Steel 304 Grade.
- **Pin:** 6.9mm - Stainless Steel 304 Grade Punch-Out Pin.
- **Knuckle:** Round
- **Endcaps:** Pressed-in interference fit. Stainless Steel 304 Grade.
- Stamped with McCallum crest.
- Loose Pin.

### INSTALLATION GUIDE ONLY

- **Door thickness:** Minimum 35mm.
- When using a door closer, we recommend a minimum of 4 hinges be used, with the top hinge located as high as possible.
- Standard Door: 2040 (H) x 820 (W) - 3 hinges.

### FIXING

- 32mm x 10g stainless steel fasteners for timber (supplied).
- 12mm x M5 stainless steel metal fasteners (supplied).
- Pop rivets are not recommended.
- Not recommended for Bi-Fold door systems.

### FINISH

- Polished Stainless Steel.

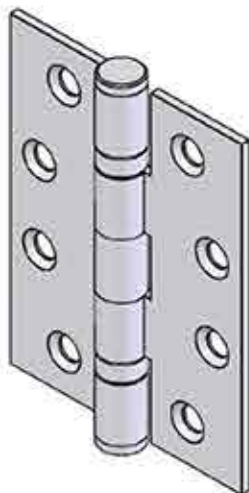
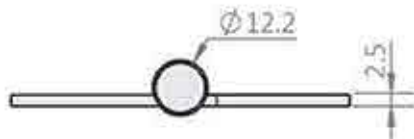
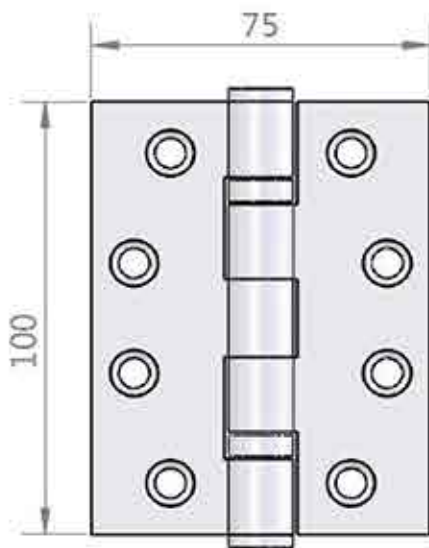
### OLD CODE NO.

- S10075 PLP

**Code No. S 223**

## STAINLESS STEEL BUTT HINGE

**Code No. S224--100mm**



### APPLICATION

.Suitable for aluminium & timber doors with aluminium, steel and timber frames.

### SPECIFICATION

- .Material : Stainless Steel 304 Grade.
- .Pin : 6.9mm - Stainless Steel 304 Grade.
- .Knuckle:Round
- .Endcaps:Pressed-in interference fit. Stainless Steel 304 Grade.
- .Stamped with McCallum crest.
- .Fixed Pin.
- .Bearings: 2 Stainless Steel Off - Cage & Ball Bearings.

### INSTALLATION GUIDE ONLY

- .Door thickness: Minimum 35mm
- .When using a door closer, we recommend a minimum of 4 hinges be used,with the top hinge located as high as possible.
- .Standard Door: 2040 (H) x 820 (W) - 3 hinges.

### FIXING

- .32mm x 10# stainless steel fasteners for timber(supplied).
- .12mm x M5 stainless steel metal fasteners(supplied).
- .Pop rivets are not recommended.
- .Not recommended for Bi-Fold door systems.

### FINISH

- .Satin finish .

### OLD CODE NO.

- . SB10075SFP(2.5mm)

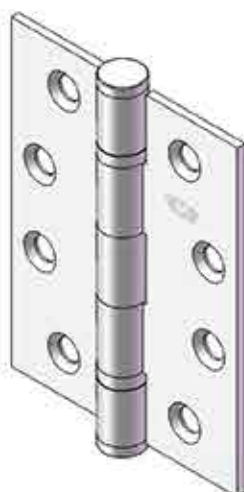
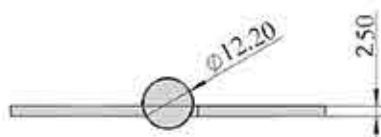
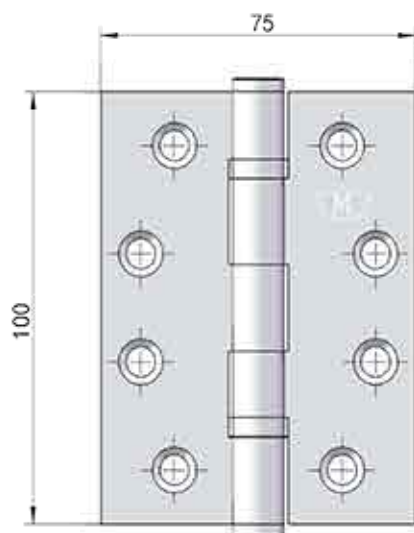
### SPECIAL NOTE

- .The S224 meets the UK and the Council of European Communities standard for Pedestrian access doors,including fire and smoke door
- The EC certificate of Conformity is 359-CPD-0043 / EN 1935:2002 /
- AC : 2003

**Code No.S224**

## STAINLESS STEEL BEARING BUTT HINGE

**Code No. S 225**



### APPLICATION

- Suitable for aluminium and timber doors with aluminium, steel and timber frames.

### SPECIFICATION

- **Material:** Stainless Steel 304 Grade.
- **Pin Dia:** 6.9mm - Stainless Steel 304 Grade.
- **Knuckle:** Round
- **Endcaps:** Pressed-in interference fit. Stainless Steel 304 Grade.
- Stamped with McCallum crest.
- Fixed Pin.
- **Bearings:** 2 Stainless Steel Off-Cage Ball Bearings.

### INSTALLATION GUIDE ONLY

- **Door thickness:** Minimum 35mm.
- When using a door closer, we recommend a minimum of 4 hinges be used, with the top hinge located as high as possible.
- Standard Door: 2040 (H) x 820 (W) - 3 hinges.

### FIXING

- 32mm x 10g stainless steel fasteners for timber (supplied).
- 12mm x M5 stainless steel metal fasteners (supplied).
- Pop rivets are not recommended.
- Not recommended for Bi-Fold door systems.

### FINISH

- Polished Stainless Steel.

### OLD CODE NO.

- SB10075 PFP

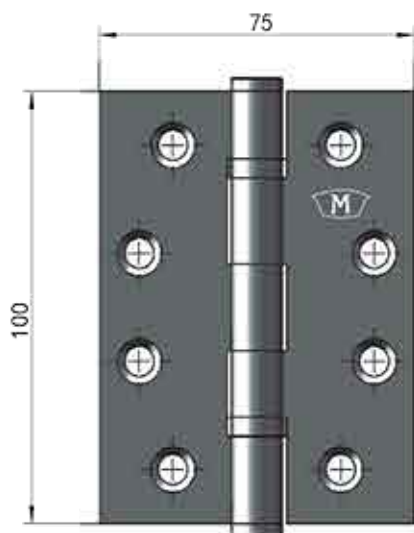
### SPECIAL NOTE

- The S 225 meets the UK and the Council of European Communities standard for Pedestrian access doors, including fire and smoke doors. The EC certificate of Conformity is 359-CPD-0043 / EN 1935:2002 / AC : 2003.

**Code No. S 225**

## STAINLESS STEEL BUTT

**Code No. S 226**



### APPLICATION

- Suitable for aluminium and timber doors with aluminium, steel and timber frames.

### SPECIFICATION

- **Material:** Stainless Steel 304 Grade.
- **Pin:** 6.9mm - Stainless Steel 304 Grade Punch-Out Pin.
- **Knuckle:** Round
- **Endcaps:** Pressed-in interference fit. Stainless Steel 304 Grade.
- Stamped with M<sup>c</sup>Callum crest.
- Fixed Pin.
- **Bearings:** 2 Stainless Steel Off-Cage Ball Bearings.

### INSTALLATION GUIDE ONLY

- **Door thickness:** Minimum 35mm.
- When using a door closer, we recommend a minimum of 4 hinges be used, with the top hinge located as high as possible.
- Standard Door: 2040 (H) x 820 (W) - 3 hinges.

### FIXING

- 32mm x 10g stainless steel fasteners for timber (supplied).
- 12mm x M5 stainless steel metal fasteners (supplied).
- Pop rivets are not recommended.
- Not recommended for Bi-Fold door systems.

### FINISH

- Black.

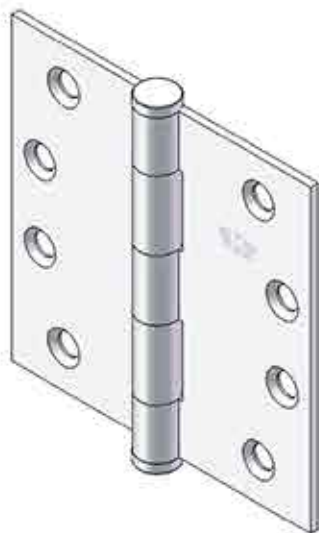
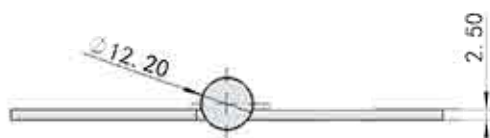
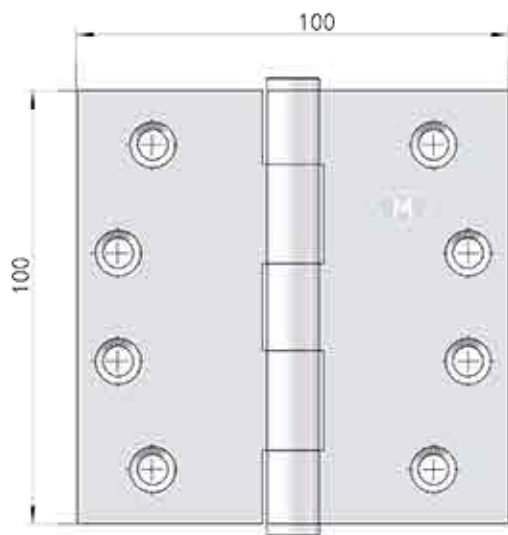
### SPECIAL NOTE

- The S 226 meets the UK and the Council of European Communities standard for Pedestrian access doors, including fire and smoke doors. The EC certificate of Conformity is 359-CPD-0043 / EN 1935:2002 / AC : 2003.

**Code No. S 226**

## STAINLESS STEEL BUTT HINGE

Code No. S 230



### APPLICATION

- Suitable for aluminium and timber doors with aluminium, steel and timber frames.

### SPECIFICATION

- **Material:** Stainless Steel 304 Grade.
- **Pin Dia:** 6.9mm - Stainless Steel 304 Grade.
- **Knuckle:** Round
- **Endcaps:** Pressed-in interference fit. Stainless Steel 304 Grade.
- Stamped with M<sup>c</sup>Callum crest.
- Fixed Pin.

### INSTALLATION GUIDE ONLY

- **Door thickness:** Minimum 35mm.
- When using a door closer, we recommend a minimum of 4 hinges be used, with the top hinge located as high as possible.
- Standard Door: 2040 (H) x 820 (W) - 3 hinges.

### FIXING

- 32mm x 10g stainless steel fasteners for timber (supplied).
- 12mm x M5 stainless steel metal fasteners (supplied).
- Pop rivets are not recommended.
- Not recommended for Bi-Fold door systems.

### FINISH

- Satin finish.

### OLD CODE NO.

- S100100 SFP

Code No. S 230

## STAINLESS STEEL BUTT HINGE

**Code No. S 231**

### APPLICATION

- Suitable for aluminium and timber doors with aluminium, steel and timber frames.

### SPECIFICATION

- **Material:** Stainless Steel 304 Grade.
- **Pin:** 6.9mm - Stainless Steel 304 Grade Punch-Out Pin.
- **Knuckle:** Round
- **Endcaps:** Pressed-in interference fit. Stainless Steel 304 Grade.
- Stamped with McCallum crest.
- Loose Pin.

### INSTALLATION GUIDE ONLY

- **Door thickness:** Minimum 35mm.
- When using a door closer, we recommend a minimum of 4 hinges be used, with the top hinge located as high as possible.
- Standard Door: 2040 (H) x 820 (W) - 3 hinges.

### FIXING

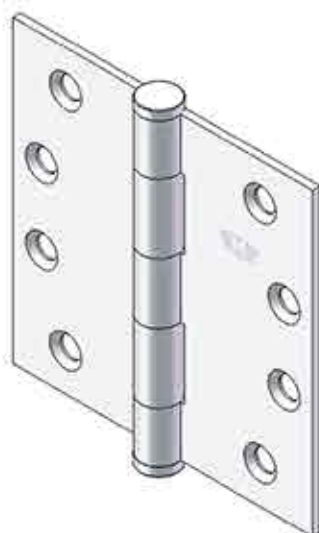
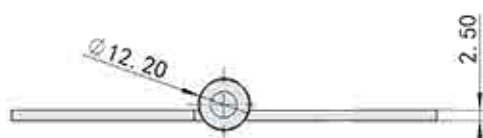
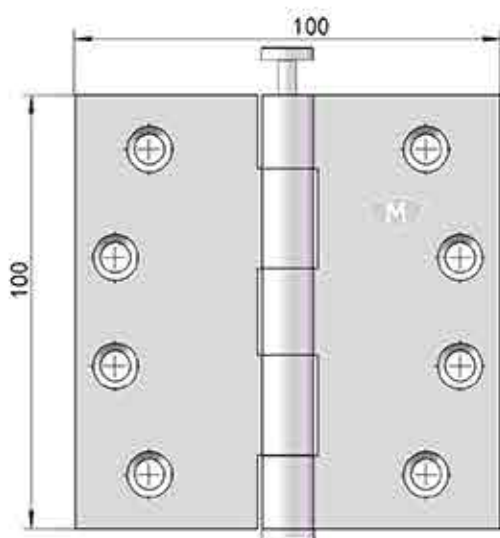
- 32mm x 10g stainless steel fasteners for timber (supplied).
- 12mm x M5 stainless steel metal fasteners (supplied).
- Pop rivets are not recommended.
- Not recommended for Bi-Fold door systems.

### FINISH

- Satin finish.

### OLD CODE NO.

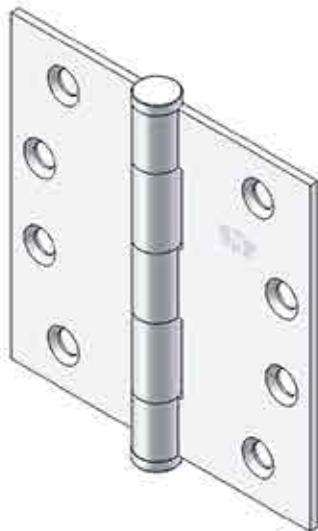
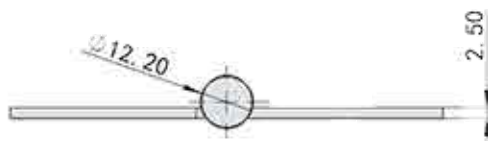
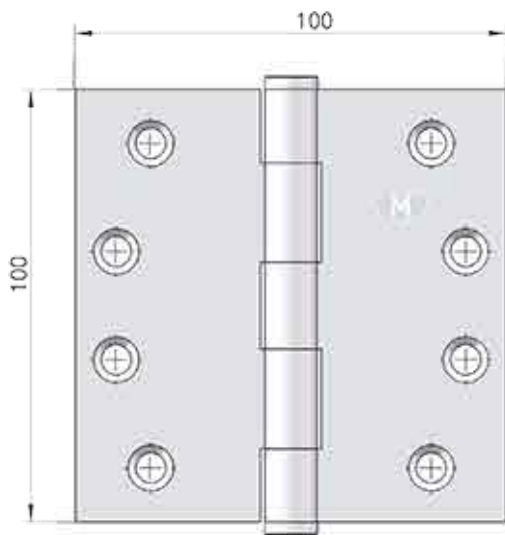
- S100100 SLP



**Code No. S 231**

## STAINLESS STEEL BUTT HINGE

**Code No. S 232**



### APPLICATION

- Suitable for aluminium and timber doors with aluminium, steel and timber frames.

### SPECIFICATION

- **Material:** Stainless Steel 304 Grade.
- **Pin:** 6.9mm - Stainless Steel 304 Grade Punch-Out Pin.
- **Knuckle:** Round
- **Endcaps:** Pressed-in interference fit. Stainless Steel 304 Grade.
- Stamped with McCallum crest.
- Fixed pin.

### INSTALLATION GUIDE ONLY

- **Door thickness:** Minimum 35mm.
- When using a door closer, we recommend a minimum of 4 hinges be used, with the top hinge located as high as possible.
- Standard Door: 2040 (h) x 820 (W) - 3 hinges.

### FIXING

- 32mm x 10g stainless steel fasteners for timber (supplied).
- 12mm x M5 stainless steel metal fasteners (supplied).
- Pop rivets are not recommended.
- Not recommended for Bi-Fold door systems.

### FINISH

- Polished Stainless Steel.

### OLD CODE NO.

- S100100 PFP

**Code No. S 232**

## STAINLESS STEEL BUTT HINGE

**Code No. S 233**

### APPLICATION

- Suitable for aluminium and timber doors with aluminium, steel and timber frames.

### SPECIFICATION

- **Material:** Stainless Steel 304 Grade.
- **Pin:** 6.9mm - Stainless Steel 304 Grade Punch-Out Pin.
- **Knuckle:** Round
- **Endcaps:** Pressed-in interference fit. Stainless Steel 304 Grade.
- Stamped with McCallum crest.
- Loose Pin.

### INSTALLATION GUIDE ONLY

- **Door thickness:** Minimum 35mm.
- When using a door closer, we recommend a minimum of 4 hinges be used, with the top hinge located as high as possible.
- Standard Door: 2040 (h) x 820 (W) - 3 hinges.

### FIXING

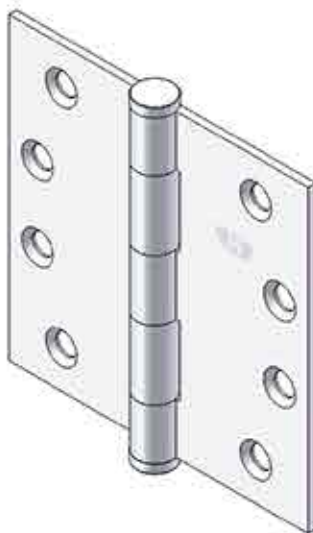
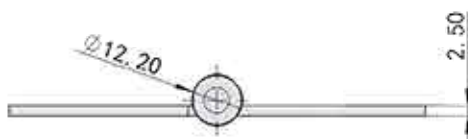
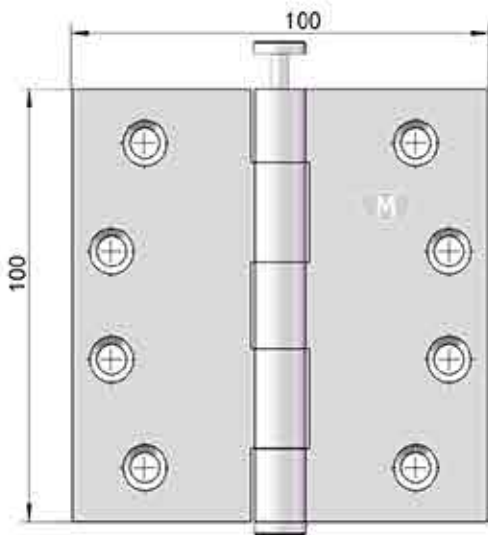
- 32mm x 10g stainless steel fasteners for timber (supplied).
- 12mm x M5 stainless steel metal fasteners (supplied).
- Pop rivets are not recommended.
- Not recommended for Bi-Fold door systems.

### FINISH

- Polished Stainless Steel.

### OLD CODE NO.

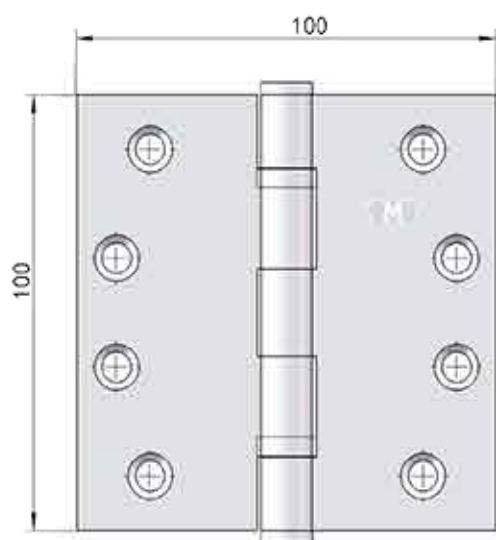
- S100100 PLP



**Code No. S 233**

## STAINLESS STEEL BUTT HINGE

**Code No. S 234**



### APPLICATION

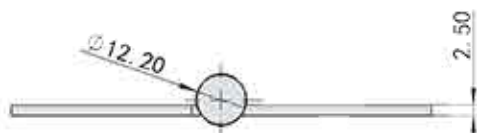
- Suitable for aluminium and timber doors with aluminium, steel and timber frames.

### SPECIFICATION

- **Material:** Stainless Steel 304 Grade.
- **Pin Dia:** 6.9mm - Stainless Steel 304 Grade.
- **Knuckle:** Round
- **Endcaps:** Pressed-in interference fit. Stainless Steel 304 Grade.
- Stamped with M<sup>C</sup>Callum crest.
- Fixed Pin.
- **Bearings:** 2 Stainless Steel Off-Cage Ball Bearings.

### INSTALLATION GUIDE ONLY

- **Door thickness:** Minimum 35mm.
- When using a door closer, we recommend a minimum of 4 hinges be used, with the top hinge located as high as possible.
- Standard Door: 2040 (H) x 820 (W) - 3 hinges.



### FIXING

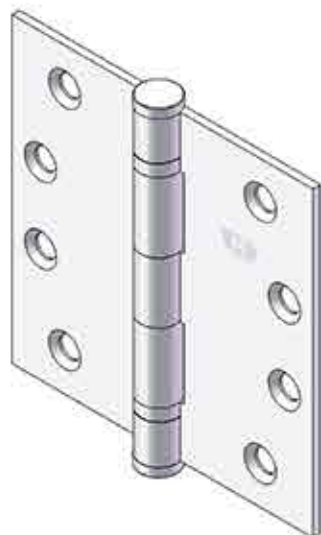
- 32mm x 10g stainless steel fasteners for timber (supplied).
- 12mm x M5 stainless steel metal fasteners (supplied).
- Pop rivets are not recommended.
- Not recommended for Bi-Fold door systems.

### FINISH

- Satin Stainless Steel

### OLD CODE NO.

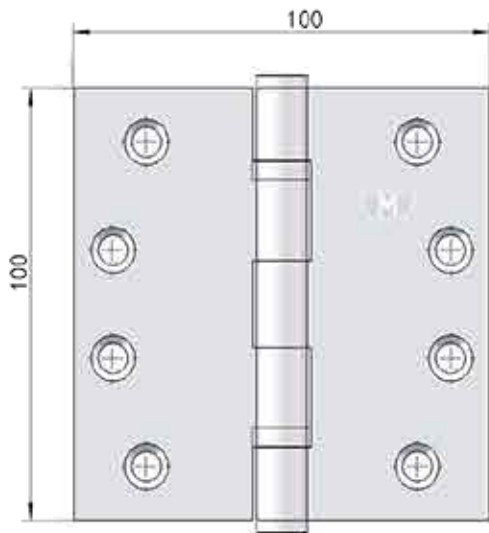
- SB100100 SFP



**Code No. S 234**

## STAINLESS STEEL BUTT HINGE

**Code No. S 235**



### APPLICATION

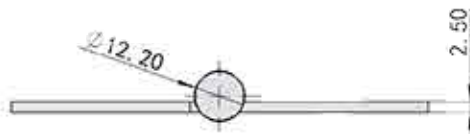
- Suitable for aluminium and timber doors with aluminium, steel and timber frames.

### SPECIFICATION

- **Material:** Stainless Steel 304 Grade.
- **Pin:** 6.9mm - Stainless Steel 304 Grade Punch-Out Pin.
- **Knuckle:** Round
- **Endcaps:** Pressed-in interference fit. Stainless Steel 304 Grade.
- Stamped with McCallum crest.
- Fixed Pin.
- **Bearings:** 2 Stainless Steel Off-Cage Ball Bearings.

### INSTALLATION GUIDE ONLY

- **Door thickness:** Minimum 35mm.
- When using a door closer, we recommend a minimum of 4 hinges be used, with the top hinge located as high as possible.
- Standard Door: 2040 (H) x 820 (W) - 3 hinges.



### FIXING

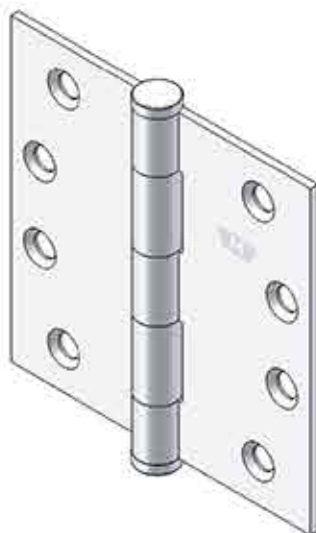
- 32mm x 10g stainless steel fasteners for timber (supplied).
- 12mm x M5 stainless steel metal fasteners (supplied).
- Pop rivets are not recommended.
- Not recommended for Bi-Fold door systems.

### FINISH

- Polished Stainless Steel.

### OLD CODE NO.

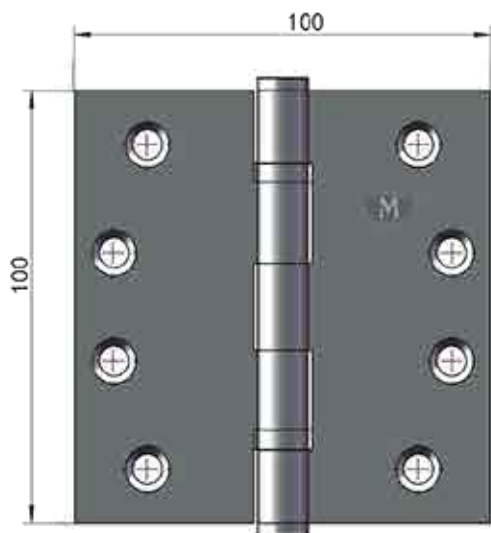
- SB100100 PFP



**Code No. S 235**

## STAINLESS STEEL BUTT HINGE

**Code No. S 236**



### APPLICATION

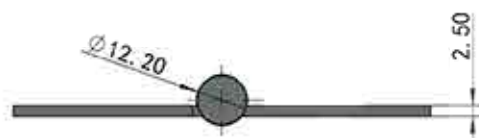
- Suitable for aluminium and timber doors with aluminium, steel and timber frames.

### SPECIFICATION

- **Material:** Stainless Steel 304 Grade.
- **Pin:** 6.9mm - Stainless Steel 304 Grade Punch-Out Pin.
- **Knuckle:** Round
- **Endcaps:** Pressed-in interference fit. Stainless Steel 304 Grade.
- Stamped with McCallum crest.
- Fixed Pin.
- **Bearings:** 2 Stainless Steel Off-Cage Ball Bearings.

### INSTALLATION GUIDE ONLY

- **Door thickness:** Minimum 35mm.
- When using a door closer, we recommend a minimum of 4 hinges be used, with the top hinge located as high as possible.
- Standard Door: 2040 (H) x 820 (W) - 3 hinges.



### FIXING

- 32mm x 10g stainless steel fasteners for timber (supplied).
- 12mm x M5 stainless steel metal fasteners (supplied).
- Pop rivets are not recommended.
- Not recommended for Bi-Fold door systems.

### FINISH

- Black.

### OLD CODE NO.

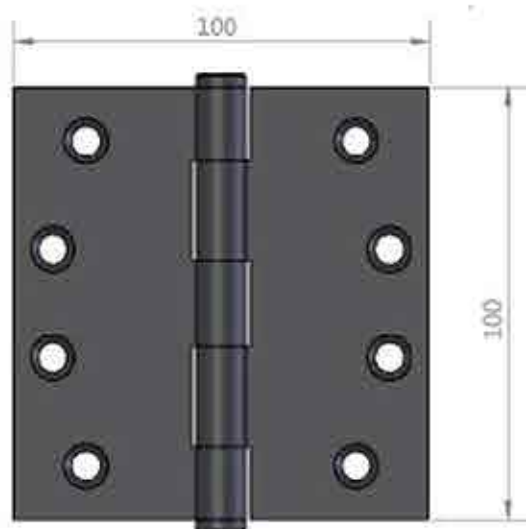
- SB100100SFP



**Code No. S 236**

## STAINLESS STEEL BUTT HINGE

Code No. S239--100mm



### APPLICATION

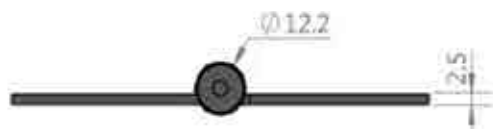
Suitable for aluminium & timber doors with aluminium, steel and timber frames.

### SPECIFICATION

**Material:** Stainless Steel 304 Grade.  
**Pin:** 6.9mm - 304 grade stainless steel.  
**Knuckle:** Round  
**Endcaps:** Pressed-in interference fit. Stainless Steel 304 Grade.  
Stamped with McCallum crest.  
Fixed Pin.

### INSTALLATION GUIDE ONLY

- **Door thickness:** Minimum 35mm
- When using a door closer, we recommend a minimum of 4 hinges be used, with the top hinge located as high as possible.
- Standard Door: 2040 (H) x 820 (W) - 3 hinges.



### FIXING

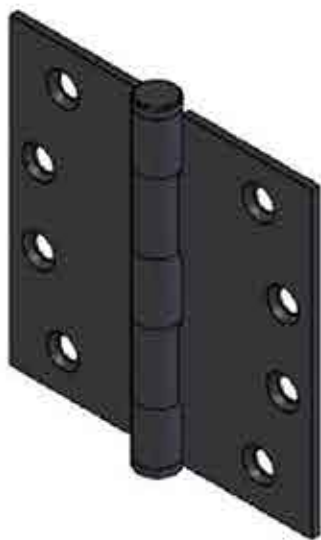
- 32mm x 10# stainless steel fasteners for timber (supplied).
- 12mm x M5 stainless steel metal fasteners (supplied).
- Pop rivets are not recommended.
- Not recommended for Bi-Fold door systems.

### FINISH

- Black.

### OLD CODE NO.

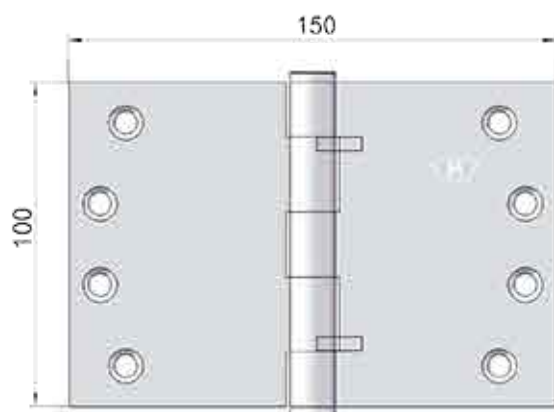
- SB100100SFP (2.5mm)



**Code No. S239**

## STAINLESS STEEL BUTT HINGE

**Code No. S 240**



### APPLICATION

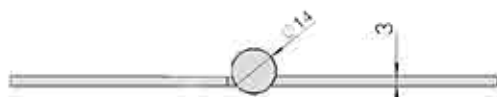
- Suitable for aluminium and timber doors with aluminium, steel and timber frames.

### SPECIFICATION

- **Material:** Stainless Steel 304 Grade.
- **Pin Dia:** 6.9mm - Stainless Steel 304 Grade.
- **Knuckle:** Round
- **Endcaps:** Pressed-in interference fit. Stainless Steel 304 Grade.
- Stamped with McCallum crest.
- Fixed Pin.
- **Bearings:** 2 Stainless Steel Off-Cage Ball Bearings.

### INSTALLATION GUIDE ONLY

- **Door thickness:** Minimum 35mm.
- When using a door closer, we recommend a minimum of 4 hinges be used, with the top hinge located as high as possible.
- Standard Door: 2040 (H) x 820 (W) - 3 hinges.



### FIXING

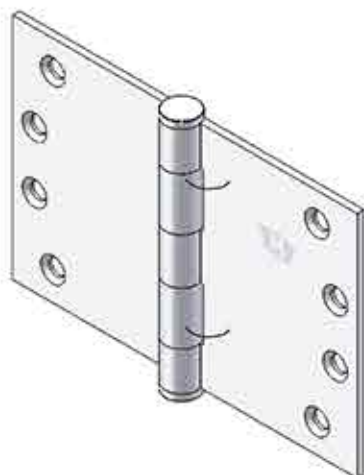
- Fastening screws supplied.
- Pop rivets are not recommended.

### FINISH

- Satin finish.

### OLD CODE NO.

- S100150SFP



**Code No. S 240**

## STAINLESS STEEL BUTT HINGE

**Code No. S 241**

### APPLICATION

- Suitable for aluminium and timber doors with aluminium, steel and timber frames.

### SPECIFICATION

- **Material:** Stainless Steel 304 Grade.
- **Pin Dia:** 6.9mm - Stainless Steel 304 Grade.
- **Knuckle:** Round
- **Endcaps:** Pressed-in interference fit. Stainless Steel 304 Grade.
- Stamped with McCallum crest.
- Fixed Pin.
- **Bearings:** 2 Stainless Steel Off-Cage Ball Bearings.

### INSTALLATION GUIDE ONLY

- **Door thickness:** Minimum 35mm.
- When using a door closer, we recommend a minimum of 4 hinges be used, with the top hinge located as high as possible.
- Standard Door: 2040 (H) x 820 (W) - 3 hinges.

### FIXING

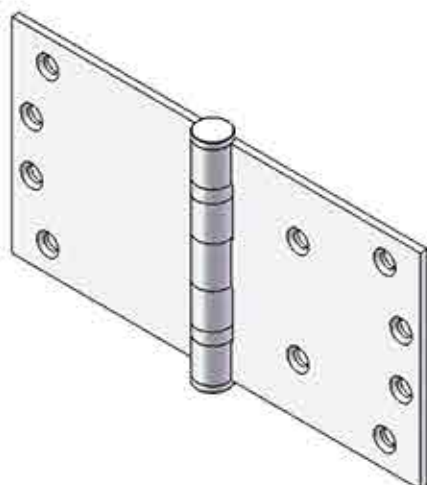
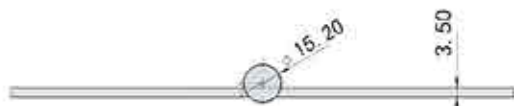
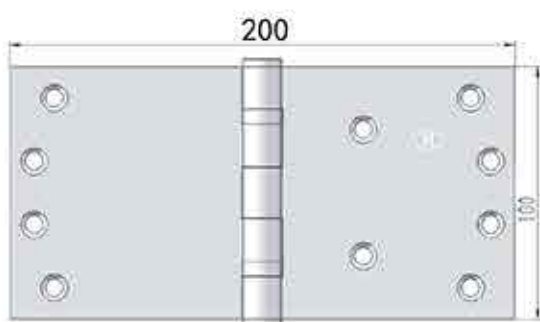
- Fastening screws supplied.
- Two extra fastening holes to allow more support from jamb material.
- Pop rivets are not recommended.

### FINISH

- Satin finish.

### OLD CODE NO.

- S100200SFP



**Code No. S 241**

## STAINLESS STEEL INTERFOLD HINGE

**Code No. S 260**

### APPLICATION

- Suitable for aluminium and timber doors in medium usage situations.
- Offset Knuckle

### SPECIFICATION

- **Material:** Stainless Steel 304 Grade
- **Bearings:** 2 Stainless Steel Off-Cage Ball Bearings.
- **Pin Dia:** 6.9mm - Stainless Steel 304 Grade.
- **Knuckle:** Round.
- **Endcaps:** Dome, Pressed-in interference knurled fit. Stainless Steel 304 Grades Steel.

### INSTALLATION GUIDE ONLY

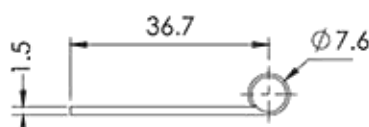
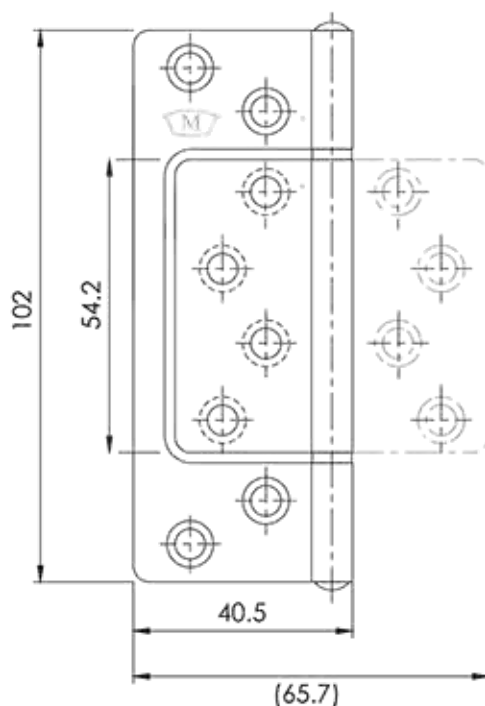
- **Door thickness:** Minimum 35mm.
- When using a door closer, we recommend a minimum of 3 hinges be used, with the top hinge located as high as possible. For excessive usage a fourth hinge may be required.
- Standard Door: 2040 (H) x 820 (W) x 20 kg - 3 hinges

### FIXING

- **Fastening screws supplied.**
- Pop rivets are not recommended.

### FINISH

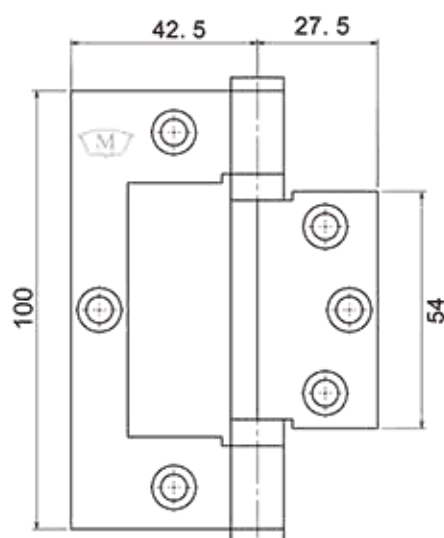
- Satin finish Stainless Steel.



**Code No. S 260**

## STAINLESS STEEL OFFSET INTERFOLD HINGE

**Code No. S 264**



### APPLICATION

- Suitable for timber doors in medium usage situations.
- **The S264 may be more suitable for timber because the fixing holes on the large leaf are further away from the timber edge.**
- Offset Knuckle

### SPECIFICATION

- **Material:** Stainless Steel 304 Grade.
- **Bearings:** 2 Stainless Steel Off-Cage Ball Bearings.
- **Pin Dia:** 6.9mm - Stainless Steel 304 Grade.
- **Knuckle:** Round
- **Endcaps:** Pressed-in interference knurled fit. Stainless Steel 304 Grade.

### INSTALLATION GUIDE ONLY

- **Door thickness:** Minimum 35mm.
- When using a door closer, we recommend a minimum of 3 hinges be used, with the top hinge located as high as possible. For excessive usage a fourth hinge may be required.
- Standard Door: 2040 (H) x 820 (W) x 20 kg - 3 hinges

### FIXING

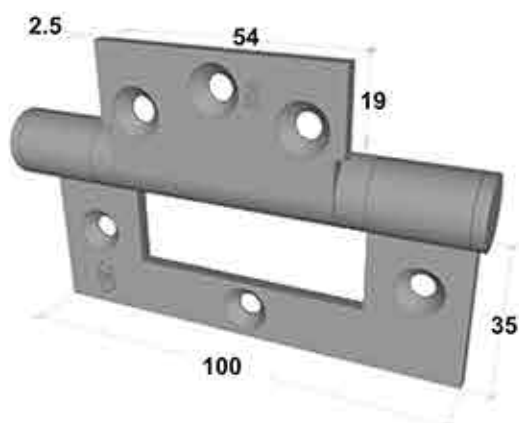
- **Fastening screws supplied.**
- Pop rivets are not recommended.

### FINISH

- Satin finish Stainless Steel.
- Black.

### OLD CODE NO.

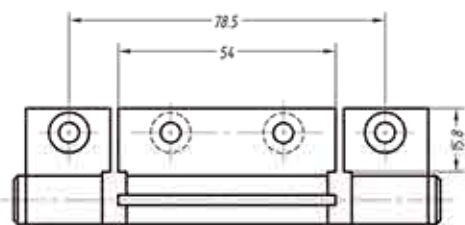
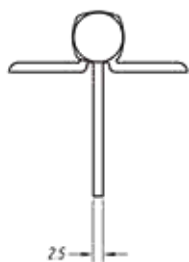
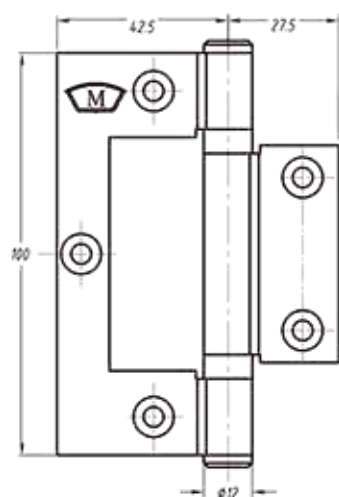
- S801T



**Code No. S 264**

## STAINLESS STEEL INTERFOLD HINGE

**Code No. S 263**



### APPLICATION

- Suitable for aluminium entrance doors in medium usage situations.
- Suitable for either centre pocket or front edge glazing systems.
- Suitable for some timber door applications.
- Pre-drilling of the holes in the timber may be required.

### SPECIFICATION

- **Material:** Stainless Steel 304 Grade.
- **Bearings:** 2 Stainless Steel Off-Cage Ball Bearings.
- **Pin Dia:** 6.9mm - Stainless Steel 304 Grade.
- **Knuckle:** Round
- **Endcaps:** Pressed-in interference knurled fit. Stainless Steel 304 Grade.

### INSTALLATION GUIDE ONLY

- **Door thickness:** Minimum 35mm.
- When using a door closer, we recommend a minimum of 3 hinges be used, with the top hinge located as high as possible. For excessive usage a fourth hinge may be required.
- Standard Door: 2040 (H) x 820 (W) x 50 kg - 3 hinges.
- **Special Note:** this hinge, which is 2.5mm thick, is suitable for retro fitting where standard fast-fix hinges have failed. The wing fastening prevents the hinge from opening, and allows for a greater door weight.

### FIXING

- Fastening screws supplied.
- Pop rivets are not recommended.

### FINISH

- Satin finish.

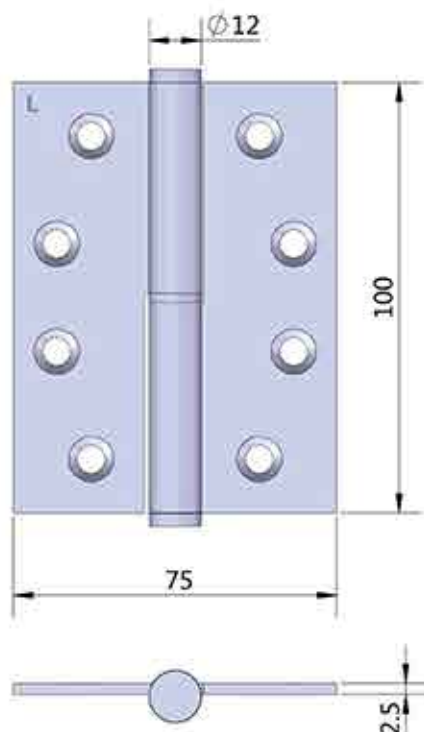
### OLD CODE NO.

- S104 S

**Code No. S 263**

## STAINLESS STEEL LIFT - OFF HINGE

**Code No. S 201**



### APPLICATION

- Lift-off facility for aluminium and timber doors.

### SPECIFICATION

- **Material:** Stainless Steel 304 Grade.
- **Pin Dia:** 6.9mm - Stainless Steel 304 Grade.
- **Knuckle:** Round - 12mm diameter.
- **Endcaps:** Pressed-in interference knurled fit. Stainless Steel 304 Grade.
- **Pin:** 15mm

### INSTALLATION GUIDE ONLY

- **HANDING IS DETERMINED AS BELOW:**  
**RIGHT HAND** is with the door coming toward you, and the hinges are on the right.  
**LEFT HAND** is when the door coming toward you, and the hinges are on the left.
- **Door thickness:** Minimum 35mm.
- For excessive usage a fourth hinge may be required.
- Standard Door: 2040 (H) x 820 (W) x 25 kg - 3 hinges.
- For lift-off clearance, we recommend a 30mm gap, minimum at the top of the door.

### FIXING

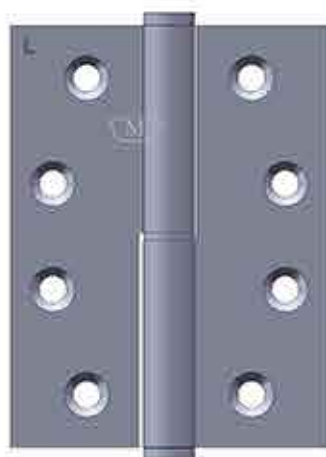
- Fastening screws supplied.
- Pop rivets are not recommended.

### FINISH

- Satin finish.

### OLD CODE NO.

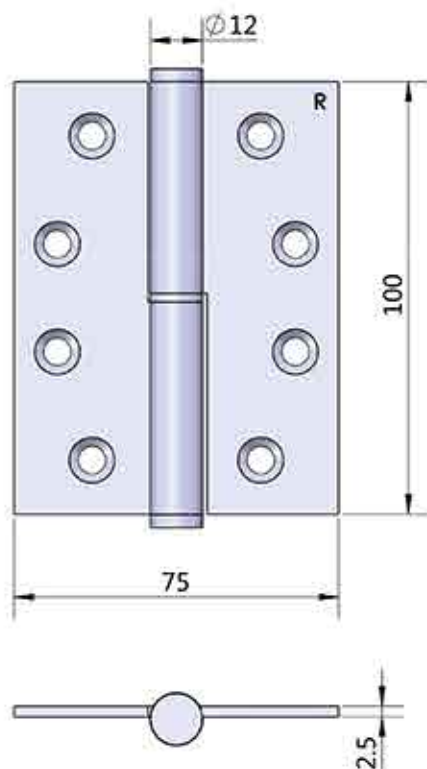
- S102 LH



**Code No. S 201**

## STAINLESS STEEL LIFT - OFF HINGE

**Code No. S 202**



### APPLICATION

- Lift-off facility for aluminium and timber doors.

### SPECIFICATION

- **Material:** Stainless Steel 304 Grade.
- **Pin Dia:** 6.9mm - Stainless Steel 304 Grade.
- **Knuckle:** Round - 12mm diameter.
- **Endcaps:** Pressed-in interference knurled fit. Stainless Steel 304 Grade.
- **Pin:** 15mm

### INSTALLATION GUIDE ONLY

- **HANDING IS DETERMINED AS BELOW:**  
**RIGHT HAND** is with the door coming toward you, and the hinges are on the right.  
**LEFT HAND** is when the door coming toward you, and the hinges are on the left.
- **Door thickness:** Minimum 35mm.
- For excessive usage a fourth hinge may be required.
- Standard Door: 2040 (H) x 820 (W) x 25 kg - 3 hinges.
- For lift-off clearance, we recommend a 30mm gap, minimum at the top of the door.

### FIXING

- **Fastening screws supplied.**
- Pop rivets are not recommended.

### FINISH

- Satin finish.

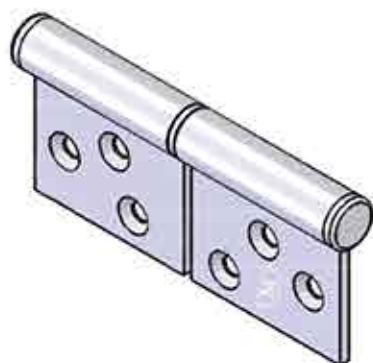
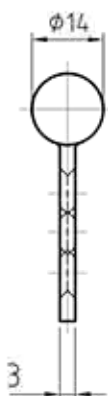
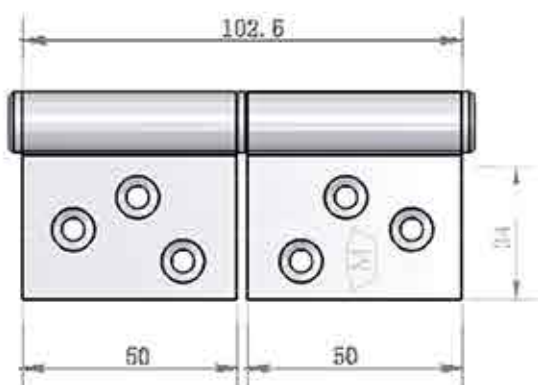
### OLD CODE NO.

- S102 RH

**Code No. S 202**

## STAINLESS STEEL LIFT - OFF HINGE

### Code No. S 203 Universal Lift Off



#### APPLICATION

- Lift-off facility for aluminium and timber doors.
- Universal fitting means application for both left and right handed doors.

#### SPECIFICATION

- **Material:** Stainless Steel 304 Grade.
- **Knuckle:** Round.
- **Pin Diameter:** 6.9mm - Stainless Steel 304 Grade.
- **Endcaps:** Pressed-in interference fit. Stainless Steel 304 Grade.
- **Pin Length:** 15mm

#### INSTALLATION GUIDE ONLY

- These hinges are designed to suit left and right hand installations making it easier for specifying.
- The leaves are central on the knuckle with double countersinking.
- Two of the screw holes in the leaf align with metal frame pattern. The third hole will require drilling and tapping of the frame.
- 3 x 12mm x M5 metal screws are supplied for the metal frame.
- **Door thickness: Minimum 35mm.**
- For excessive usage, a fourth hinge may be required.
- Standard Door: 2040 (H) x 820 (W) x 25 kg - 3 hinges.
- For lift-off clearance, we recommend a 30mm gap, minimum at the top of the door.

#### FIXING

- Fastening screws supplied.
- Pop rivets are not recommended.

#### FINISH

- Satin finish.

**Code No. S 203**

## STAINLESS STEEL BUTT HINGE

Code No. S 271

### APPLICATION

- Suitable for aluminium and timber doors with aluminium, steel and timber frames.

### SPECIFICATION

- Material:** Stainless Steel 304 Grade.
- Bearings:** 2 off-cage ball bearings.
- Pin Dia:** 6.9mm - 304 Stainless Steel.
- Knuckle:** Round.
- Endcaps:** Pressed-in interference fit. Stainless Steel 304 Grade.
- Stamped with McCallum crest.

### INSTALLATION GUIDE ONLY

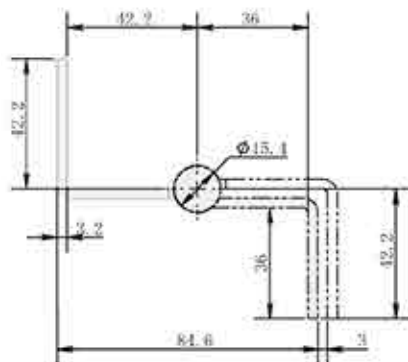
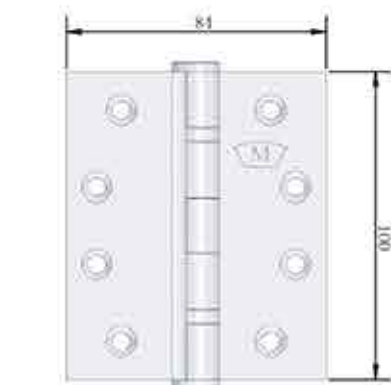
- Door thickness:** Minimum 32mm.
- When using a door closer, we recommend a minimum of 4 hinges be used, with the top hinge located as high as possible.
- Standard Door: 2040 (H) x 820 (W) - 3 hinges.

### FIXING

- 32mm x 10g stainless steel fasteners for timber (supplied).
- 12mm x M5 stainless steel metal fasteners (supplied).
- Pop rivets are not recommended.
- Not recommended for Bi-Fold door systems.

### FINISH

- Satin finish.



Code No. S 271

## STAINLESS STEEL SCREEN BUTT HINGE

**Code No. S 275**

### APPLICATION

- Screen doors and screens, small windows, some steel cabinet applications.

### SPECIFICATION

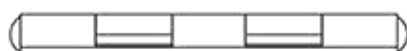
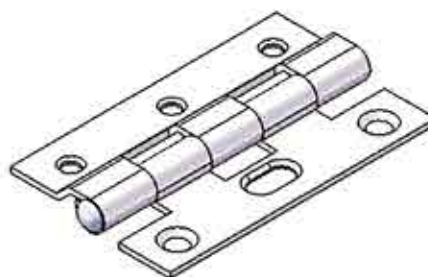
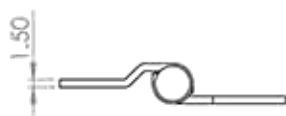
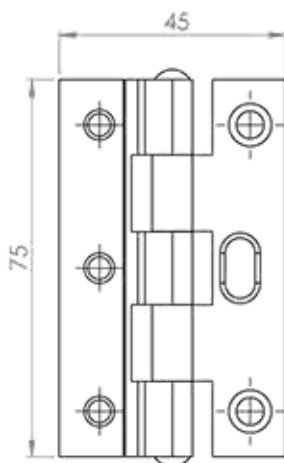
- **Material:** Stainless Steel 304 Grade.
- **Pin Dia:** 4.5mm - Stainless Steel 304 Grade - spin rivet.
- **Hole Pattern:** 3 holes in each leaf.
- Offset for screen door application.

### FIXING

- **Fastening screws NOT supplied.**
- Pop rivets are not recommended.

### FINISH

- Satin finish Stainless Steel.



**Code No. S 275**

## STAINLESS STEEL BUTT HINGE

**Code No. S 278**

### APPLICATION

- Suitable for aluminium and timber doors with aluminium, steel and timber frames.

### SPECIFICATION

- Material:** Stainless Steel 304 Grade.
- Pin Dia:** 6.9mm - Stainless Steel 304 Grade.
- Knuckle:** Round.
- Endcaps:** Pressed-in interference fit. Stainless Steel 304 Grade.
- Stamped with McCallum crest.
- Four washers.

### INSTALLATION GUIDE ONLY

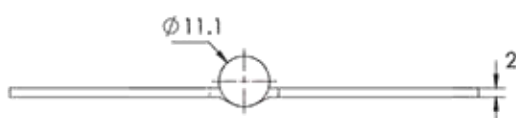
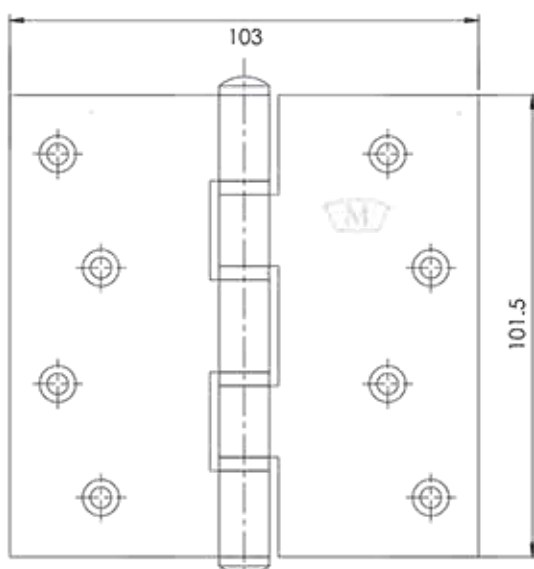
- Door thickness:** Minimum 32mm.
- When using a door closer, we recommend a minimum of 4 hinges be used, with the top hinge located as high as possible.
- Standard Door: 2040 (H) x 820 (W) - 3 hinges.

### FINISH

- 32mm x 10g stainless steel fasteners for timber (supplied).
- Pop rivets are not recommended.
- Not recommended for Bi-Fold door systems.

### FINISH

- Satin finish.



**Code No. S 278**

## STAINLESS STEEL BUTT HINGE

**Code No. S 279**

### APPLICATION

- Suitable for aluminium and timber doors with aluminium, steel and timber frames.

### SPECIFICATION

- **Material:** Stainless Steel 304 Grade.
- **Pin Dia:** 6.9mm - Stainless Steel 304 Grade.
- **Knuckle:** Round.
- **Endcaps:** Pressed-in interference fit. Stainless Steel 304 Grade.
- Stamped with McCallum crest.
- Four washers.

### INSTALLATION GUIDE ONLY

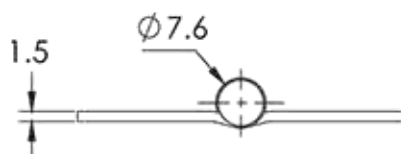
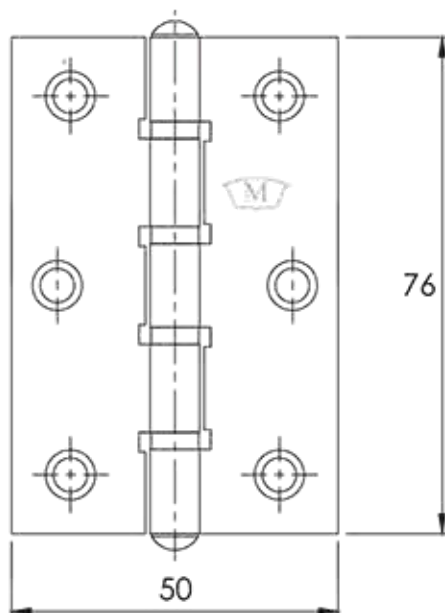
- **Door thickness:** Minimum 32mm.
- When using a door closer, we recommend a minimum of 4 hinges be used, with the top hinge located as high as possible.
- Standard Door: 2040 (H) x 820 (W) - 3 hinges.

### FINISH

- 32mm x 10g stainless steel fasteners for timber (supplied).
- Pop rivets are not recommended.
- Not recommended for Bi-Fold door systems.

### FINISH

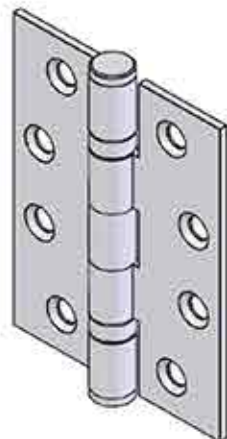
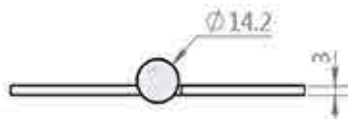
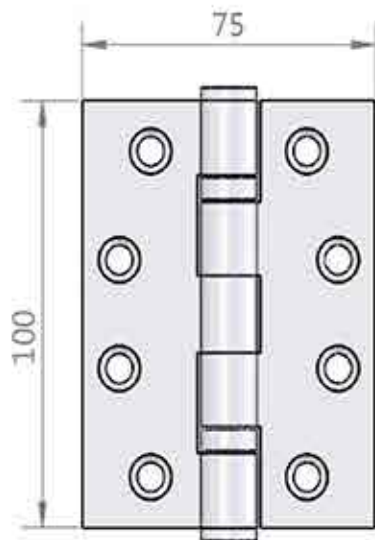
- Satin finish.



**Code No. S 279**

## ★ NEW ★ STAINLESS STEEL BUTT HINGE

Code No. S265--100mm



### APPLICATION

.Suitable for aluminium & timber doors with aluminium, steel and timber frames.

### SPECIFICATION

- .Material : Stainless Steel 304 Grade.
- .Pin : 7.9mm - 304 grade stainless steel.
- .Knuckle:Round
- .Endcaps:Pressed-in interference fit. Stainless Steel 304 Grade.
- .Stamped with McCallum crest.
- .Fixed Pin.
- .Bearings: 2 Stainless Steel Off - Cage & Ball Bearings.

### INSTALLATION GUIDE ONLY

- .Door thickness: Minimum 35mm
- .When using a door closer, we recommend a minimum of 4 hinges be used,with the top hinge located as high as possible.
- .Standard Door: 2040 (H) x 820 (W) - 3 hinges.

### FIXING

- .32mm x 10# stainless steel fasteners for timber(supplied).
- .12mm x M5 stainless steel metal fasteners(supplied).
- .Pop rivets are not recommended.
- .Not recommended for Bi-Fold door systems.

### FINISH

- .Satin finish and Polished stainless steel and Black .

### SPECIAL NOTE

- .The S224 meets the UK and the Council of European Communities standard for Pedestrian access doors,including fire and smoke door  
The EC certificate of Conformity is 359-CPD-0043 / EN 1935:2002 / AC : 2003

**Code No.S265**



## STAINLESS STEEL BUTT HINGE

Code No. S266--100mm

### APPLICATION

.Suitable for aluminium & timber doors with aluminium, steel and timber frames.

### SPECIFICATION

- .Material : Stainless Steel 304 Grade.
- .Pin : 7.9mm - 304 grade stainless steel.
- .Knuckle:Round
- .Endcaps:Pressed-in interference fit. Stainless Steel 304 Grade.
- .Stamped with McCallum crest.
- .Fixed Pin.

### INSTALLATION GUIDE ONLY

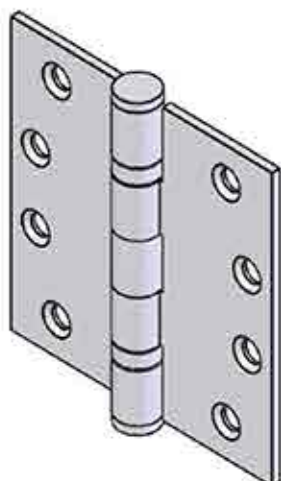
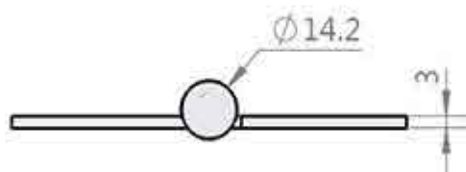
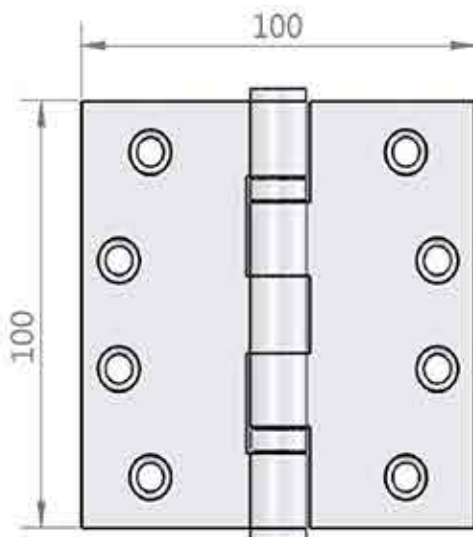
- .Door thickness: Minimum 35mm
- .When using a door closer, we recommend a minimum of 4 hinges be used,with the top hinge located as high as possible.
- .Standard Door: 2040 (H) x 820 (W) - 3 hinges.

### FIXING

- .32mm x 10# stainless steel fasteners for timber(supplied).
- .12mm x M5 stainless steel metal fasteners(supplied).
- .Pop rivets are not recommended.
- .Not recommended for Bi-Fold door systems.

### FINISH

- .Satin finish and Polished stainless steel and Black .

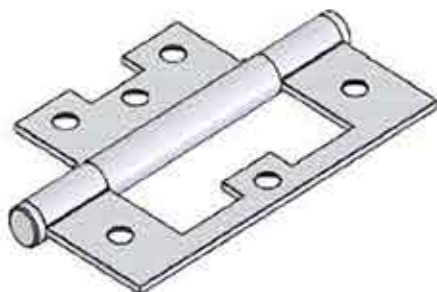
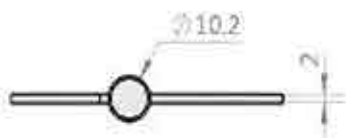
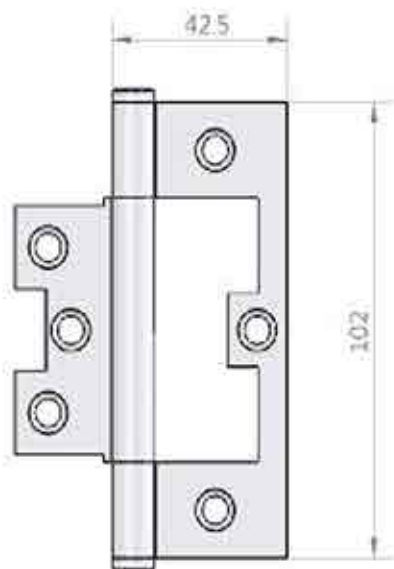


**Code No.S266**



## STAINLESS STEEL BUTT HINGE

Code No. S267--100mm



### APPLICATION

- .Suitable for timber doors in medium usage situations.
- .The S267 may be more suitable for timber because the fixing holes on the large leaf are further away from the timber edge.
- .Offset Knuckle

### SPECIFICATION

- .Material : Stainless Steel 304 Grade.
- .Pin Dia: 6.9mm - Stainless Steel 304 Grade.
- .Knuckle:Round
- .Endcaps:Pressed-in interference fit. 304 grade stainless.
- .Stamped with McCallum crest.

### INSTALLATION GUIDE ONLY

- .Door thickness: Minimum 35mm
- .When using a door closer, we recommend a minimum of 3 hinges be used,with the top hinge located as high as possible.For excessive usage a fourth hinge may be required.
- .Standard Door: 2040 (H) x 820 (W) x 20KG - 3 hinges.

### FIXING

- .Fastening screws supplied
- .Pop rivets are not recommended.

### FINISH

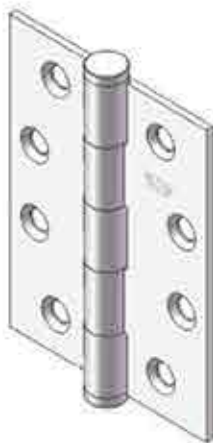
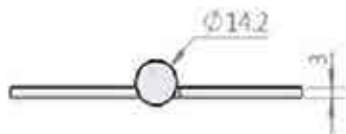
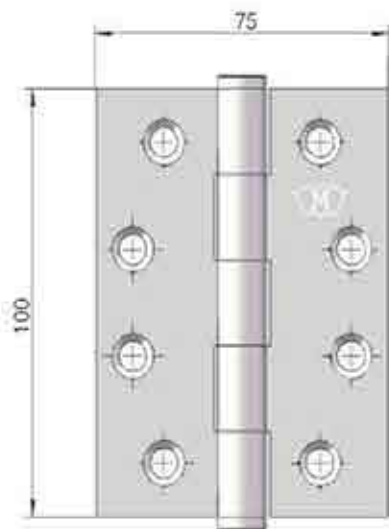
- .Satin finish stainless steel and Black .

Code No.S267



## STAINLESS STEEL BUTT HINGE

Code No. S268--100mm



### APPLICATION

.Suitable for aluminium & timber doors with aluminium, steel and timber frames.

### SPECIFICATION

- .Material : Stainless Steel 304 Grade.
- .Pin : 7.9mm - 304 grade stainless steel.
- .Knuckle:Round
- .Endcaps:Pressed-in interference fit. Stainless Steel 304 Grade.
- .Stamped with McCallum crest.
- .Fixed Pin.

### INSTALLATION GUIDE ONLY

- .Door thickness: Minimum 35mm
- .When using a door closer, we recommend a minimum of 4 hinges be used,with the top hinge located as high as possible.
- .Standard Door: 2040 (H) x 820 (W) - 3 hinges.

### FIXING

- .32mm x 10# stainless steel fasteners for timber(supplied).
- .12mm x M5 stainless steel metal fasteners(supplied).
- .Pop rivets are not recommended.
- .Not recommended for Bi-Fold door systems.

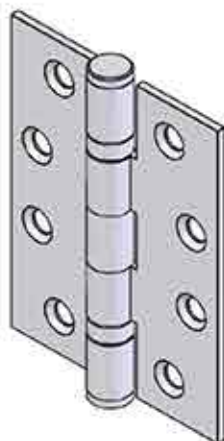
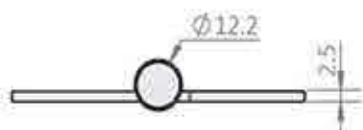
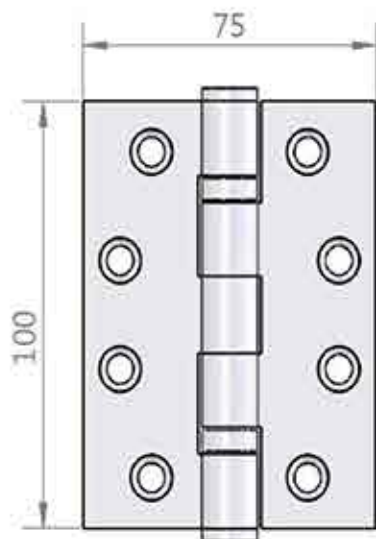
### FINISH

- .Satin finish and Polished stainless steel and Black .

**Code No.S268**

## ★ NEW ★ STAINLESS STEEL BUTT HINGE

Code No. S281--100mm



### APPLICATION

.Suitable for aluminium & timber doors with aluminium, steel and timber frames.

### SPECIFICATION

- .Material : Stainless Steel 201 Grade.
- .Pin : 6.9mm - Stainless Steel 201 Grade.
- .Knuckle:Round
- .Endcaps:Pressed-in interference fit. Stainless Steel 201 Grade.
- .Stamped with McCallum crest.
- .Fixed Pin.
- .Bearings: 2 Stainless Steel Off - Cage & Ball Bearings.

### INSTALLATION GUIDE ONLY

.Door thickness: Minimum 35mm

.When using a door closer, we recommend a minimum of 4 hinges be used,with the top hinge located as high as possible.  
Standard Door: 2040 (H) x 820 (W) - 3 hinges.

### FIXING

- .32mm x 10# stainless steel fasteners for timber(supplied).
- .12mm x M5 stainless steel metal fasteners(supplied).
- .Pop rivets are not recommended.
- .Not recommended for Bi-Fold door systems.

### FINISH

.Satin finish (Polished stainless steel and Black Available).

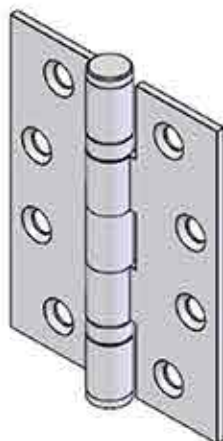
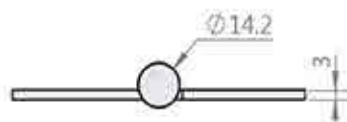
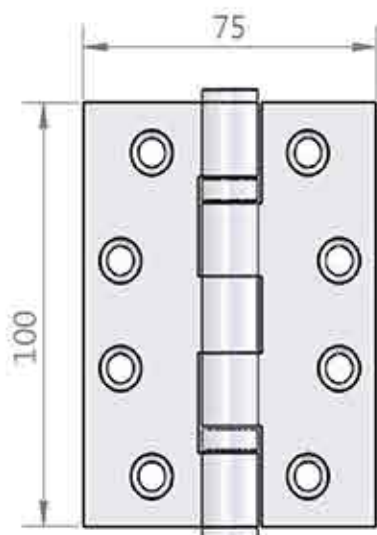
### SPECIAL NOTE

.The S281 meets the UK and the Council of European Communities standard for Pedestrian access doors,including fire and smoke door  
The EC certificate of Conformity is 359-CPD-0043 / EN 1935:2002 / AC : 2003

**Code No.S281**

## ★ NEW ★ STAINLESS STEEL BUTT HINGE

Code No. S282--100mm



### APPLICATION

.Suitable for aluminium & timber doors with aluminium, steel and timber frames.

### SPECIFICATION

- .Material : Stainless Steel 201 Grade.
- .Pin : 7.9mm - 201 grade stainless steel.
- .Knuckle:Round
- .Endcaps:Pressed-in interference fit. Stainless Steel 201 Grade.
- .Stamped with McCallum crest.
- .Fixed Pin.
- .Bearings: 2 Stainless Steel Off - Cage & Ball Bearings.

### INSTALLATION GUIDE ONLY

- .Door thickness: Minimum 35mm
- .When using a door closer, we recommend a minimum of 4 hinges be used,with the top hinge located as high as possible.
- .Standard Door: 2040 (H) x 820 (W) - 3 hinges.

### FIXING

- .32mm x 10# stainless steel fasteners for timber(supplied).
- .12mm x M5 stainless steel metal fasteners(supplied).
- .Pop rivets are not recommended.
- .Not recommended for Bi-Fold door systems.

### FINISH

- .Satin finish (Polished stainless steel and Black Available).

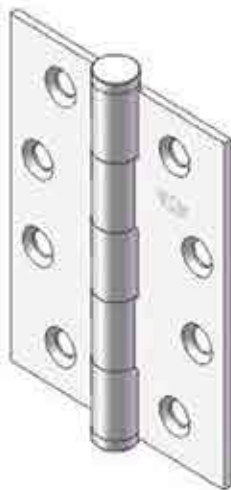
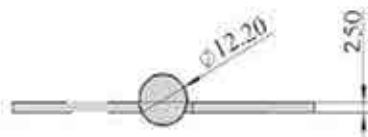
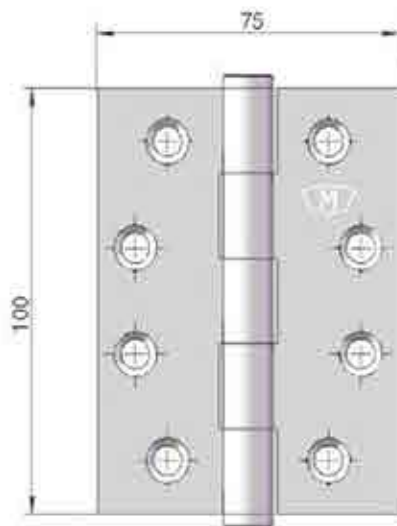
### SPECIAL NOTE

.The S282 meets the UK and the Council of European Communities standard for Pedestrian access doors,including fire and smoke door  
The EC certificate of Conformity is 359-CPD-0043 / EN 1935:2002 / AC : 2003

**Code No.S282**

## ★ NEW ★ STAINLESS STEEL BUTT HINGE

Code No. S283--100mm



### APPLICATION

.Suitable for aluminium & timber doors with aluminium, steel and timber frames.

### SPECIFICATION

- .Material : Stainless Steel 201 Grade.
- .Pin : 6.9mm - 201 grade stainless steel.
- .Knuckle:Round
- .Endcaps:Pressed-in interference fit. Stainless Steel 201 Grade.
- .Stamped with McCallum crest.
- .Fixed Pin.

### INSTALLATION GUIDE ONLY

- .Door thickness: Minimum 35mm
- .When using a door closer, we recommend a minimum of 4 hinges be used,with the top hinge located as high as possible.
- .Standard Door: 2040 (H) x 820 (W) - 3 hinges.

### FIXING

- .32mm x 10# stainless steel fasteners for timber(supplied).
- .12mm x M5 stainless steel metal fasteners(supplied).
- .Pop rivets are not recommended.
- .Not recommended for Bi-Fold door systems.

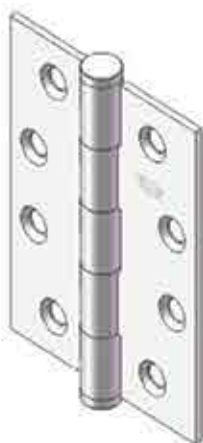
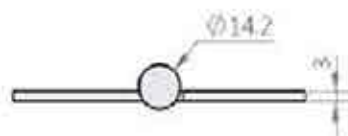
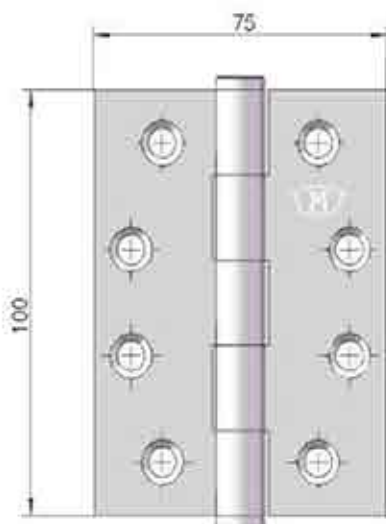
### FINISH

- .Satin finish (Polished stainless steel and Black Available).

**Code No.S283**

## ★ NEW ★ STAINLESS STEEL BUTT HINGE

Code No. S284--100mm



### APPLICATION

.Suitable for aluminium & timber doors with aluminium, steel and timber frames.

### SPECIFICATION

- .Material : Stainless Steel 201 Grade.
- .Pin : 7.9mm - 201 grade stainless steel.
- .Knuckle:Round
- .Endcaps:Pressed-in interference fit. Stainless Steel 201 Grade.
- .Stamped with McCallum crest.
- .Fixed Pin.

### INSTALLATION GUIDE ONLY

- .Door thickness: Minimum 35mm
- .When using a door closer, we recommend a minimum of 4 hinges be used,with the top hinge located as high as possible.
- .Standard Door: 2040 (H) x 820 (W) - 3 hinges.

### FIXING

- .32mm x 10# stainless steel fasteners for timber(supplied).
- .12mm x M5 stainless steel metal fasteners(supplied).
- .Pop rivets are not recommended.
- .Not recommended for Bi-Fold door systems.

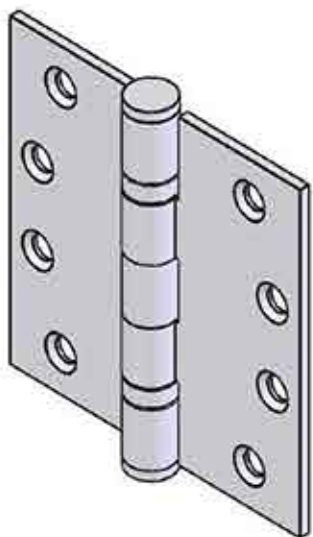
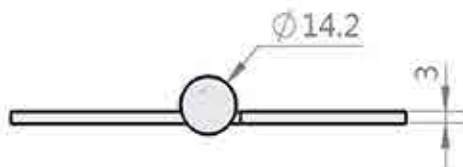
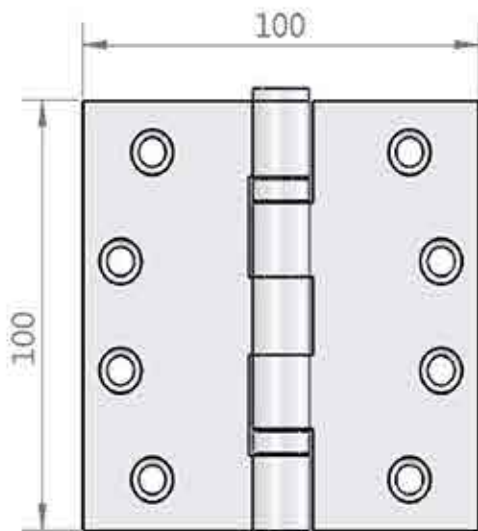
### FINISH

- .Satin finish (Polished stainless steel and Black Available).

**Code No.S284**

## ★ NEW ★ STAINLESS STEEL BUTT HINGE

Code No. S285--100mm



### APPLICATION

.Suitable for aluminium & timber doors with aluminium, steel and timber frames.

### SPECIFICATION

- .Material : Stainless Steel 201 Grade.
- .Pin : 7.9mm - 201 grade stainless steel.
- .Knuckle:Round
- .Endcaps:Pressed-in interference fit. Stainless Steel 201 Grade.
- .Stamped with McCallum crest.
- .Fixed Pin.

### INSTALLATION GUIDE ONLY

- .Door thickness: Minimum 35mm
- .When using a door closer, we recommend a minimum of 4 hinges be used,with the top hinge located as high as possible.
- .Standard Door: 2040 (H) x 820 (W) - 3 hinges.

### FIXING

- .32mm x 10# stainless steel fasteners for timber(supplied).
- .12mm x M5 stainless steel metal fasteners(supplied).
- .Pop rivets are not recommended.
- .Not recommended for Bi-Fold door systems.

### FINISH

- .Satin finish (Polished stainless steel and Black Available).

Code No.S285

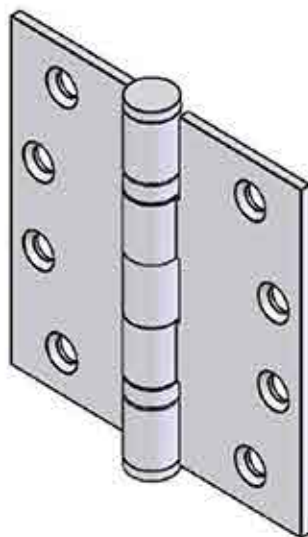
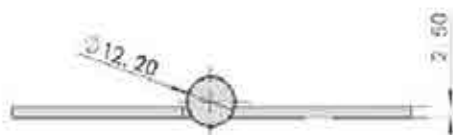
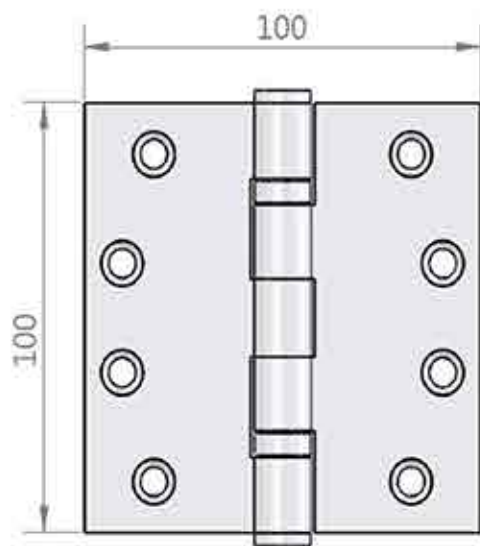


Quality Hinges Since 1939

UNIT 1/5 VOYAGER CIRCUIT GLENDENNING NSW 2761  
PH: (02) 9698 5111 FAX: (02) 9698 5055  
www.mccallumhinges.com.au  
EMAIL: sales@mccallumhinges.com.au

## ★ NEW ★ STAINLESS STEEL BUTT HINGE

Code No. S286--100mm



### APPLICATION

.Suitable for aluminium & timber doors with aluminium, steel and timber frames.

### SPECIFICATION

- .Material : Stainless Steel 201 Grade.
- .Pin : 6.9mm - 201 grade stainless steel.
- .Knuckle:Round
- .Endcaps:Pressed-in interference fit. Stainless Steel 201 Grade.
- .Stamped with McCallum crest.
- .Fixed Pin.

### INSTALLATION GUIDE ONLY

.Door thickness: Minimum 35mm

- .When using a door closer, we recommend a minimum of 4 hinges be used,with the top hinge located as high as possible.
- .Standard Door: 2040 (H) x 820 (W) - 3 hinges.

### FIXING

- .32mm x 10# stainless steel fasteners for timber(supplied).
- .12mm x M5 stainless steel metal fasteners(supplied).
- .Pop rivets are not recommended.
- .Not recommended for Bi-Fold door systems.

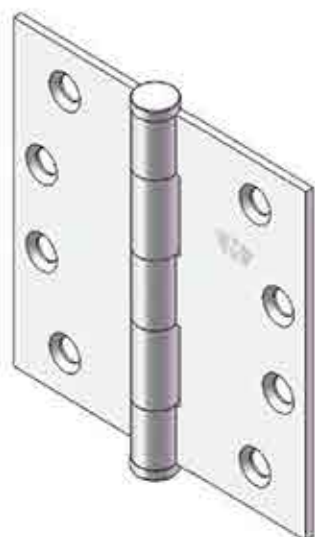
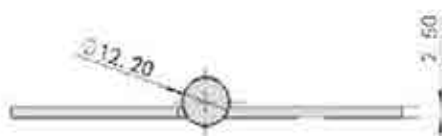
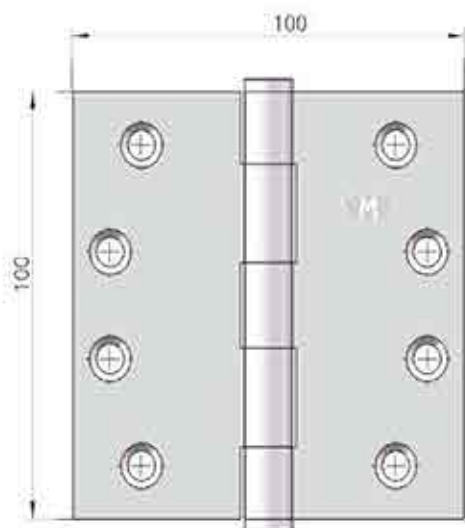
### FINISH

- .Satin finish (Polished stainless steel and Black Available).

Code No.S286

## ★ NEW ★ STAINLESS STEEL BUTT HINGE

Code No. S287--100mm



### APPLICATION

.Suitable for aluminium & timber doors with aluminium, steel and timber frames.

### SPECIFICATION

- .Material : Stainless Steel 201 Grade.
- .Pin : 6.9mm - 201 grade stainless steel.
- .Knuckle:Round
- .Endcaps:Pressed-in interference fit. Stainless Steel 201 Grade.
- .Stamped with McCallum crest.
- .Fixed Pin.

### INSTALLATION GUIDE ONLY

.Door thickness: Minimum 35mm

.When using a door closer, we recommend a minimum of 4 hinges be used,with the top hinge located as high as possible.

.Standard Door: 2040 (H) x 820 (W) - 3 hinges.

### FIXING

- .32mm x 10# stainless steel fasteners for timber(supplied).
- .12mm x M5 stainless steel metal fasteners(supplied).
- .Pop rivets are not recommended.
- .Not recommended for Bi-Fold door systems.

### FINISH

.Satin finish (Polished stainless steel and Black Available).

**Code No.S287**

## ★ NEW ★ STAINLESS STEEL BUTT HINGE

Code No. S288--100mm

### APPLICATION

.Suitable for aluminium & timber doors with aluminium, steel and timber frames.

### SPECIFICATION

.Material : Stainless Steel 201 Grade.

.Pin : 7.9mm - 201 grade stainless steel.

.Knuckle:Round

.Endcaps:Pressed-in interference fit. Stainless Steel 201 Grade.

.Stamped with McCallum crest.

.Fixed Pin.

### INSTALLATION GUIDE ONLY

.Door thickness: Minimum 35mm

.When using a door closer, we recommend a minimum of 4 hinges be used,with the top hinge located as high as possible.

.Standard Door: 2040 (H) x 820 (W) - 3 hinges.

### FIXING

.32mm x 10# stainless steel fasteners for timber(supplied).

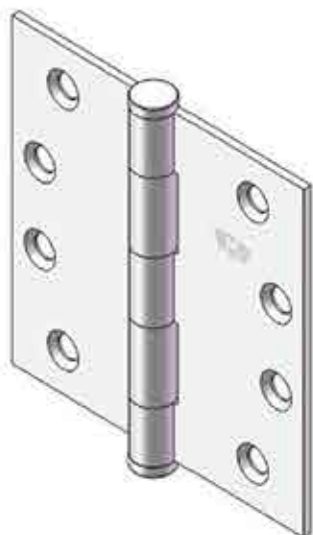
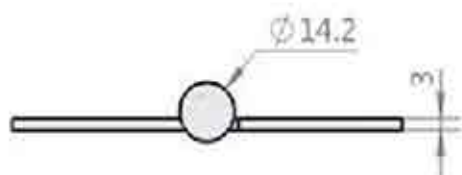
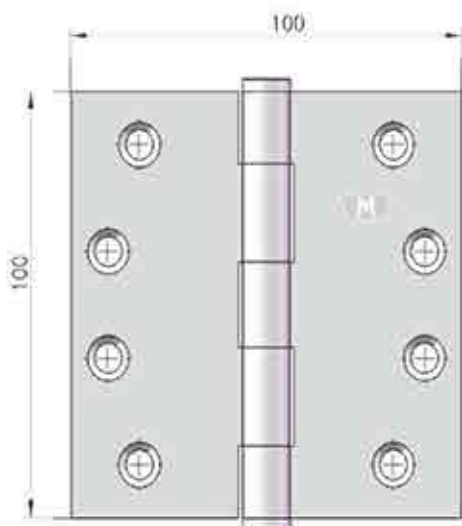
.12mm x M5 stainless steel metal fasteners(supplied).

.Pop rivets are not recommended.

.Not recommended for Bi-Fold door systems.

### FINISH

.Satin finish (Polished stainless steel and Black Available).

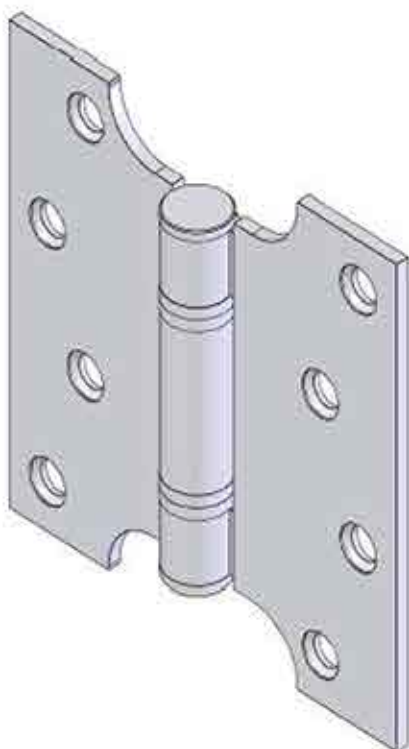


**Code No.S288**



## STAINLESS STEEL PARLIAMENT HINGE

Code No. S289, S290, S291, S292, S293



### APPLICATION

.Projects doors clear of architraves,  
window boards or down pipes

### SPECIFICATION

.Material 304/316 Grade  
.Knuckle: Round--14.2mm dia  
Stainless steel end cap

### INSTALLATION GUIDE ONLY

.Max width: 2040(H)x820(W)mm  
.Max weight: 120 kg

### FIXING

Screws supplied

### FINISH

.Polish finish and satin finish available.

### SIZES AVAILABLE

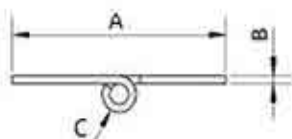
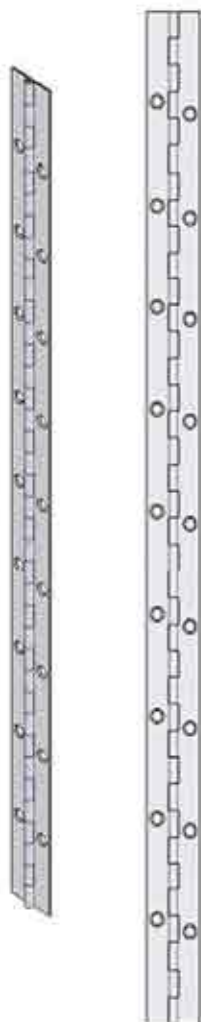
- . Code **S289** 100x150x3.5mm
- . Code **S290** 100x175x3.5mm
- . Code **S291** 100x200x3.5mm
- . Code **S292** 75x150x3.5mm
- . Code **S293** 125x175x3.5mm

**Code No. S289, S290, S291, S292, S293**



## PIANO HINGE

Code No. S301, S302, S303, S304, S305, S306



### APPLICATION

- .Full height hinge for door
- .Low distribution across entire door height
- .Increased security
- .Suitable for low, medium and high duty applications

### SPECIFICATION

- .Material 304 / 316 Grade / metal available
- .Knuckle: Round

### INSTALLATION GUIDE ONLY

- .Light & Heavy Gauges both available

### FIXING

- .Plain / drilling hole available

### FINISH

- .Satin finish or passivated

### SIZES AVAILABLE

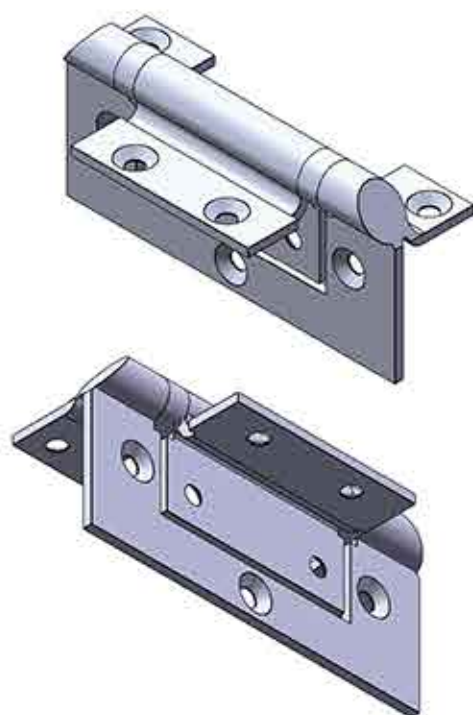
- . **Code S301** 1-1/8X20GX6FT
- . **Code S302** 1-1/4X20GX6FT
- . **Code S303** 1-1/2 X 20G X6FT
- . **Code S304** 2X16GX6FT
- . **Code S305** 3x16Gx6FT
- . **Code S306** 4x16Gx6FT

**Code No. S301, S302, S303, S304, S305, S306**

★ NEW ★

## STAINLESS STEEL ANTI LIGATURE HINGE

Code No. ALS104-100mm



### APPLICATION

- .Antiligature knuckles
- .Heavy duty suitable for high traffic doors
- .Interior use
- .Security option

### SPECIFICATION

- .Material 304 Grade
- .Knuckle: Round

### INSTALLATION GUIDE ONLY

- .Max width: 2040(H)x820(W)mm
- .Max weight: 100 kg

### FIXING

- Screws supplied

### FINISH

- .Stainless and black available.

Code No. ALS104