



sales@mccallumhinges.com.au

www.mccallumhinges.com.au



Quality Hinges Since 1939

About McCallum Australia

McCallum Australia has been manufacturing high quality hardware products for the Australian market since 1939.

Our products are designed and developed in Australia, made from the highest quality materials and processes to exceed the high demands of Australian Standards and the market.

McCallum Australia is the pre-eminent hinge manufacturer for Australia. Our products have been used in hundreds of thousands of projects across Australia – including some of the most prominent such as, The Sydney Opera House, New Parliament House Canberra, and Crown Casino.

McCallum's pioneered the extruded aluminium hinge that features aluminium pressed endcaps, keyed flanged nylon bearings and stainless-steel hinge pins. We have included these innovative design features in our popular heavy duty fast-fix hinge range.

Our range of products are used extensively throughout the Australian market and are sort after by tradespeople, specifiers and technicians for new projects, repairs, refurbishments, and retrofits.

McCallum Australia products are sought for their key attributes:

- Quality
- Reliability
- Technical innovation
- Value

We support this with a focus on strong customer support.

McCallum representatives and stockists would be pleased to discuss and offer advice regarding your hardware requirements.

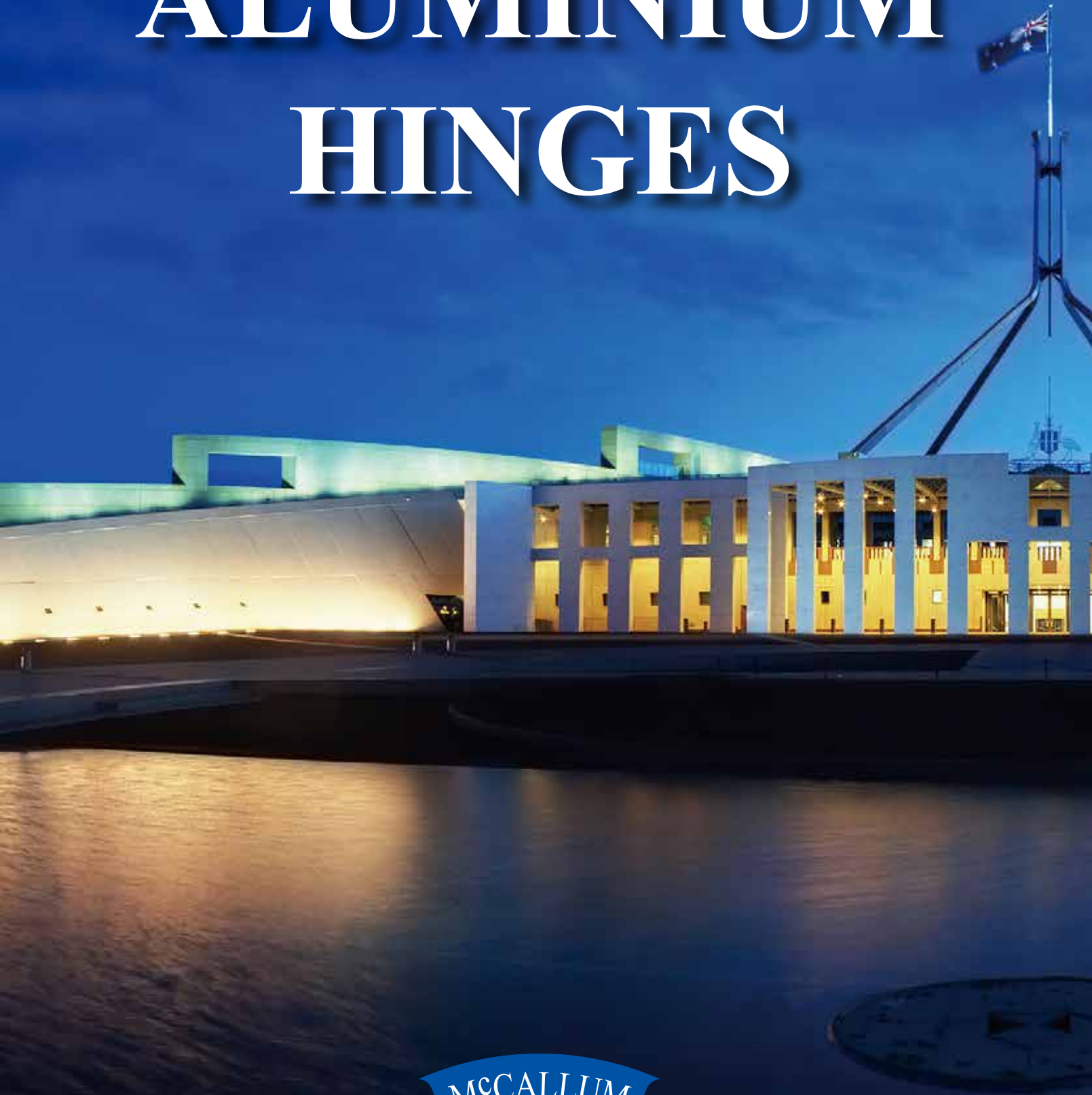
For additional technical information please contact us

+61 2 9698 5111

sales@mccallumhinges.com.au



ALUMINIUM HINGES



McCALLUM
AUSTRALIA

Quality Hinges Since 1939

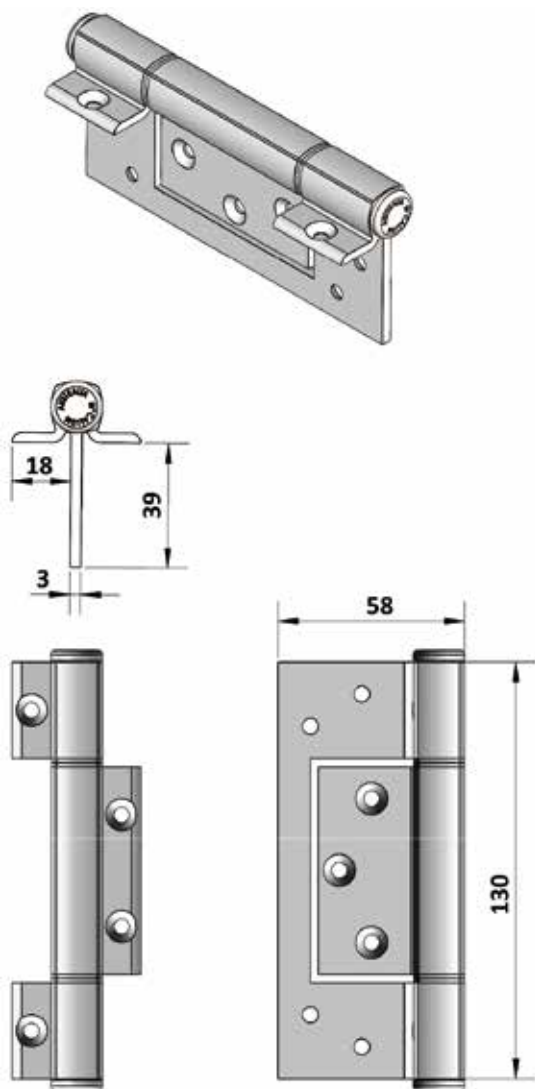
March 2022

CONTENTS

A104	-----	P1
A114	-----	P2
A124	-----	P3
A134	-----	P4
A154	-----	P5
A105	-----	P6
A115	-----	P7
A125	-----	P8
A155	-----	P9
A165	-----	P10
A166	-----	P11
A167	-----	P12
A168	-----	P13
A163	-----	P14
A107	-----	P15
A117	-----	P16
A127	-----	P17
A137	-----	P18
A119	-----	P19
A129	-----	P20
A174	-----	P21
A176	-----	P22
A101	-----	P23
A102	-----	P24
A103	-----	P25
A173	-----	P26
P435	-----	P27
P436	-----	P28
A140	-----	P29
A141	-----	P30
A142	-----	P31
A143	-----	P32
A146	-----	P33
A150	-----	P34
A151	-----	P35
A170	-----	P36
A171	-----	P37
AL104	-----	P38
AL105	-----	P39
A13040	-----	P40
A20040	-----	P41
AL13025mm	-----	P42

HEAVY DUTY ALUMINIUM INTERFOLD HINGE

Code No. A 104



APPLICATION

- Suitable for aluminium entrance doors in high usage situation
- Suitable for either centre pocket or front edge glazing systems.
- Suitable for some timber door applications.
- Pre-drilling of the holes in the timber may be required.

SPECIFICATION

- Alloy: High strength T.6 minimum tensile 254 mpa.
- Pin Dia: 6mm 304 Stainless Steel with machined chamfer both ends.
- Bushes: Flanged nylon.
- Knuckle: Squareline - Heavy Duty
- Aluminium Endcaps: Pressed-in interference fit.
- Maximum Weight Capacity: 100 kg - 3 hinges

INSTALLATION GUIDE ONLY

- Door thickness: Minimum 40mm.
 - When using a door closer, we recommend a minimum of 3 hinges be used, with the top hinge located as high as possible. For excessive usage, a fourth hinge may be required.
 - Standard Door: 2040 (H) x 820 (W)
 - Oversize Door: Turn over for further information.
 - The wing locator allows for fast fixing.
- THE 1.0MM ALUMINIUM PACKER, PLACED UNDER THE WING, ALLOWS FOR BETTER ALIGNMENT OF THE DOOR, AND FOR THE CORRECT POSITIONING AGAINST THE RUBBER SEAL, IF REQUIRED. THE PACKER, A104 SPACER, IS AVAILABLE AS A SEPARATE ITEM FROM YOUR SUPPLIER.

FIXING

- Fastening screws supplied.
- Pop rivets are not recommended.

FINISH

- SNA - Satin Natural Anodised
- Black - Black Powder Coat
- White - White Powder Coat

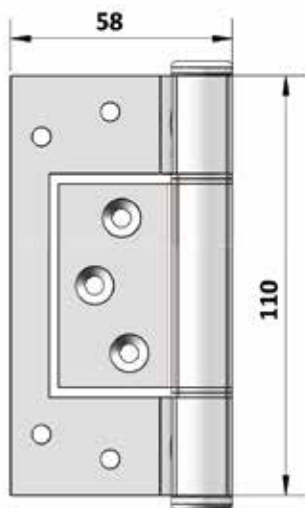
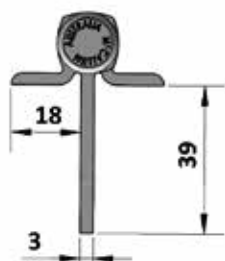
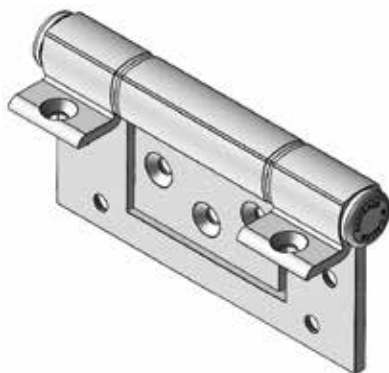
OLD CODE NO.

- A 104 F

Code No. A 104

HEAVY DUTY ALUMINIUM INTERFOLD HINGE

Code No. A 114



APPLICATION

- Suitable for aluminium entrance doors in high usage situation
- Suitable for either centre pocket or front edge glazing systems.
- Suitable for some timber door applications.
- Pre-drilling of the holes in the timber may be required.

SPECIFICATION

- Alloy: High strength T.6 minimum tensile 254 mpa.
- Pin Dia: 6mm 304 Stainless Steel with machined chamfer both ends.
- Bushes: Flanged nylon.
- Knuckle: Squareline - Heavy Duty
- Aluminium Endcaps: Pressed-in interference fit.
- Maximum Weight Capacity: 60 kg - 3 hinges

INSTALLATION GUIDE ONLY

- Door thickness: Minimum 40mm.
- When using a door closer, we recommend a minimum of 3 hinges be used, with the top hinge located as high as possible. For excessive usage, a fourth hinge may be required.
- Standard Door: 2040 (H) x 820 (W)
- Locator allows for fast fixing.

FIXING

- Fastening screws supplied.
- Locator allows for Fast-Fixing.

FINISH

- SNA - Satin Natural Anodised
- Black - Black Powder Coat
- White - White Powder Coat

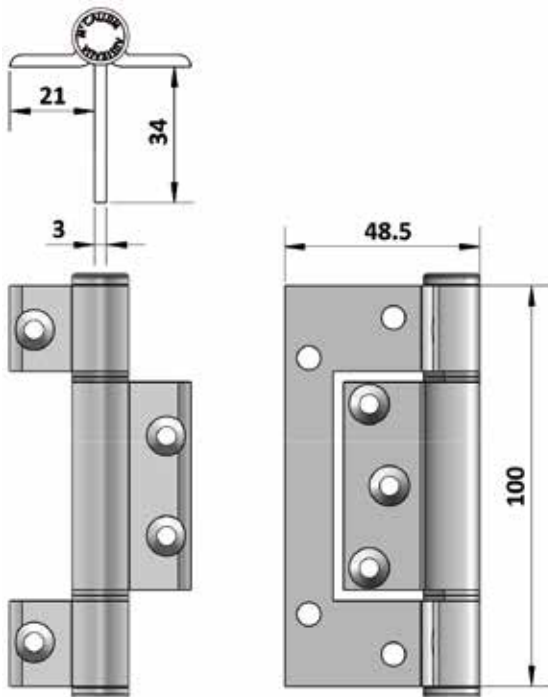
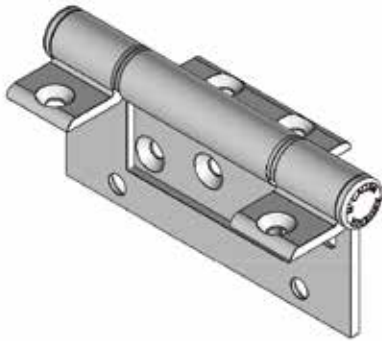
OLD CODE NO.

- A 104 MF

Code No. A 114

ALUMINIUM INTERFOLD HINGE

Code No. A 124



APPLICATION

- Suitable for aluminium entrance doors in high usage situation
- Suitable for either centre pocket or front edge glazing systems.
- Suitable for some timber door applications.
- Pre-drilling of the holes in the timber may be required.

SPECIFICATION

- Alloy: High strength T.6 minimum tensile 254 mpa.
- Pin Dia: 6mm 304 Stainless Steel with machined chamfer both ends.
- Bushes: Flanged nylon.
- Knuckle: Squareline - Heavy Duty
- Aluminium Endcaps: Pressed-in interference fit.
- Maximum Weight Capacity: 20 kg - 3 hinges

INSTALLATION GUIDE ONLY

- Door thickness: Minimum 35mm.
- When using a door closer, we recommend a minimum of 3 hinges be used, with the top hinge located as high as possible. For excessive usage, a fourth hinge may be required.
- Standard Door: 2040 (H) x 820 (W)
- Locator allows for fast fixing.

FIXING

- Fastening screws supplied.
- Pop rivets are not recommended.

FINISH

- SNA - Satin Natural Anodised
- Black - Black Powder Coat
- White - White Powder Coat

OLD CODE NO.

- A 104 SF

Code No. A 124

HEAVY DUTY ALUMINIUM INTERFOLD HINGE

Code No. A 134

APPLICATION

- Suitable for aluminium entrance doors in high usage situation
- Suitable for either centre pocket or front edge glazing systems.
- Suitable for some timber door applications.
- Pre-drilling of the holes in the timber may be required.

SPECIFICATION

- **Alloy:** High strength T.6 minimum tensile 254 Mpa.
- **Pin Dia:** 8mm 304 Stainless Steel with machined chamfer both ends.
- **Bushes:** Flanged nylon.
- **Knuckle:** Squareline - Heavy Duty
- **Aluminium Endcaps:** Pressed-in interference fit.
- **Maximum Weight Capacity:** 120 kg - 3 hinges

INSTALLATION GUIDE ONLY

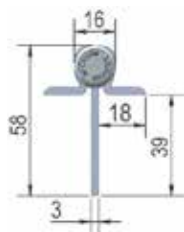
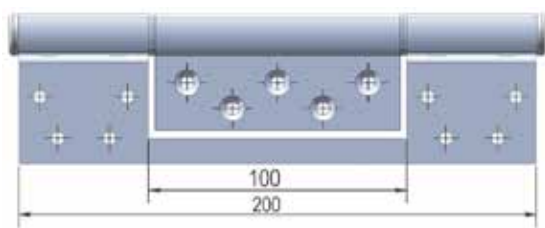
- **Door thickness: Minimum 40mm.**
- When using a door closer, we recommend a minimum of 3 hinges be used, with the top hinge located as high as possible. For excessive usage, a fourth hinge may be required.
- Standard Door: 2040 (h) x 820 (W)
- Oversize Door: Turn over for further information.
- Locator allows for fast fixing.

FIXING

- **Fastening screws supplied.**
- Pop rivets are not recommended.

FINISH

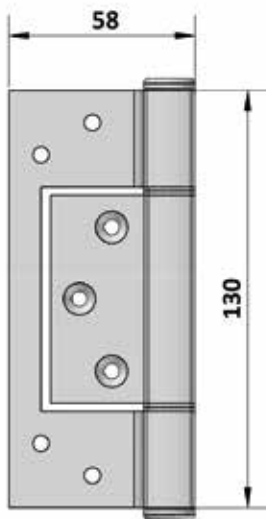
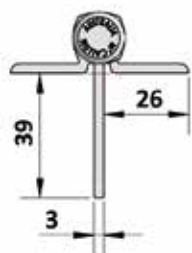
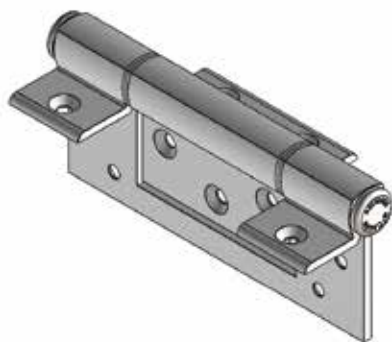
- SNA - Satin Natural Anodised
- Black - Black Powder Coat
- White - White Powder Coat



Code No. A 134

HEAVY DUTY ALUMINIUM INTERFOLD HINGE

Code No. A 154



APPLICATION

- Suitable for aluminium entrance doors in high usage situation
- Suitable for either centre pocket or front edge glazing systems.
- Suitable for some timber door applications.
- Pre-drilling of the holes in the timber may be required.
- The A154WF will be more suitable for Timber doors than the A104 because the fixing holes on the wings are approx. 13mm away from the edge of the door.

SPECIFICATION

- Alloy: High strength T.6 minimum tensile 254 mpa.
- Pin Dia: 6mm 304 Stainless Steel with machined chamfer both ends.
- Bushes: Flanged nylon.
- Knuckle: Squareline - Heavy Duty
- Aluminium Endcaps: Pressed-in interference fit.
- Maximum Weight Capacity: 100 kg - 3 hinges

INSTALLATION GUIDE ONLY

- Door thickness: Minimum 40mm.
 - When using a door closer, we recommend a minimum of 3 hinges be used, with the top hinge located as high as possible. For excessive usage, a fourth hinge may be required.
 - Standard Door: 2040 (h) x 820 (W)
 - Oversize Door: Turn over for further information.
 - The wing locator allows for fast fixing.
- THE 1.0MM ALUMINIUM PACKER, PLACED UNDER THE WINGS, ALL OWS FOR BETTER ALIGNMENT OF THE DOOR, AND FOR THE CORRECT POSITIONING AGAINST THE RUBBER SEAL, IF REQUIRED. THE PACKER, A104 SPACER, IS AVAILABLE AS A SEPARATE ITEM FROM YOUR SUPPLIER.

FIXING

- Fastening screws supplied.
- Pop rivets are not recommended.

FINISH

- SNA - Satin Natural Anodised
- Black - Black Powder Coat
- White - White Powder Coat

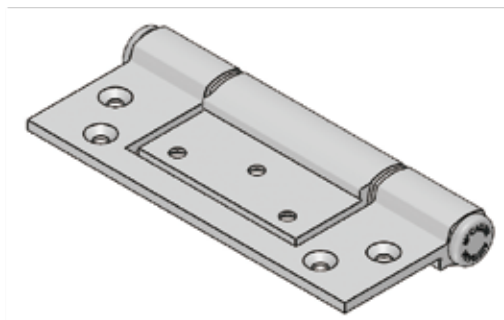
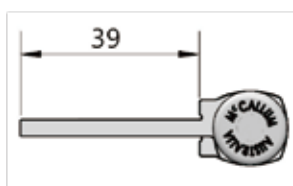
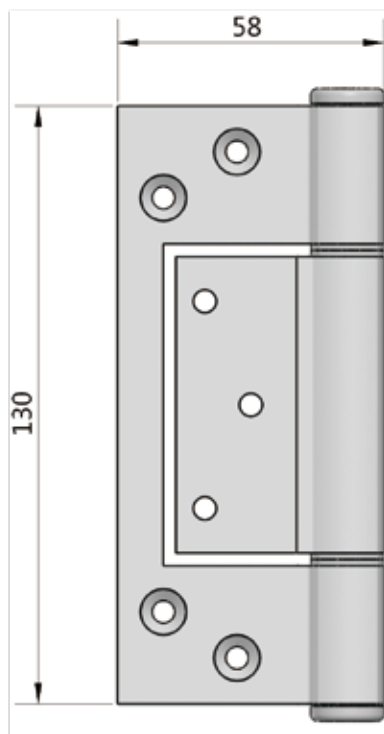
OLD CODE NO.

- A 105 WF

Code No. A 154

HEAVY DUTY ALUMINIUM INTERFOLD HINGE

Code No. A 105



APPLICATION

- Suitable for aluminium entrance doors in high usage situation
- Suitable for either centre pocket or front edge glazing systems.
- Suitable for some timber door applications.
- Pre-drilling of the holes in the timber may be required.

SPECIFICATION

- Alloy: High strength T.6 minimum tensile 254 mpa.
- Pin Dia: 6mm 304 Stainless Steel with machined chamfer both ends.
- Bushes: Flanged nylon.
- Knuckle: Squareline - Heavy Duty
- Aluminium Endcaps: Pressed-in interference fit.
- Maximum Weight Capacity: 80 kg - 3 hinges

INSTALLATION GUIDE ONLY

- Door thickness: Minimum 38mm (due to use of inner leaf size).
- When using a door closer, we recommend a minimum of 3 hinges be used, with the top hinge located as high as possible. For excessive usage, a fourth hinge may be required.
- Standard Door: 2040 (H)x 820 (W)
- Locator allows for fast fixing.
- THIS HINGE IS DESIGNED WITH NO OFF-SET, UNLIKE THE PREVIOUS A1 05F.

FIXING

- Fastening screws supplied.
- Pop rivets are not recommended.

FINISH

- SNA - Satin Natural Anodised
- Black - Black Powder Coat
- White - White Powder Coat

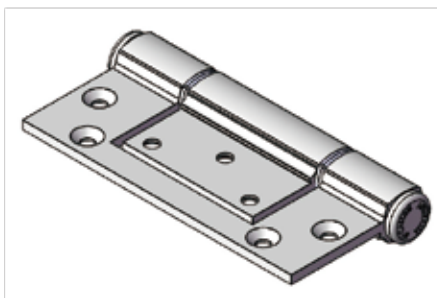
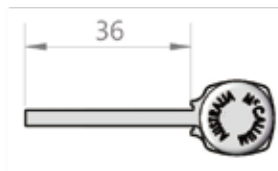
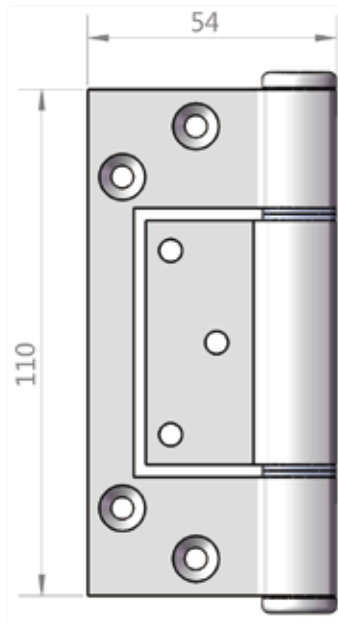
OLD CODE NO.

- A 105 T

Code No. A 105

HEAVY DUTY ALUMINIUM INTERFOLD HINGE

Code No. A 115



APPLICATION

- Suitable for aluminium entrance doors in high usage situation
- Suitable for either centre pocket or front edge glazing systems.
- Suitable for some timber door applications.
- Pre-drilling of the holes in the timber may be required.

SPECIFICATION

- Alloy: High strength T.6 minimum tensile 254 mpa.
- Pin Dia: 6mm 304 Stainless Steel with machined chamfer both ends.
- Bushes: Flanged nylon.
- Knuckle: Squareline - Heavy Duty
- Aluminium Endcaps: Pressed-in interference fit.
- Maximum Weight Capacity: 40 kg - 3 hinges

INSTALLATION GUIDE ONLY

- Door thickness: Minimum 35mm (due to use of inner leaf size).
- When using a door closer, we recommend a minimum of 3 hinges be used, with the top hinge located as high as possible. For excessive usage, a fourth hinge may be required.
- Standard Door: 2040 (H)x 820 (W)
- Locator allows for fast fixing.

FIXING

- Fastening screws supplied.
- Pop rivets are not recommended.

FINISH

- SNA - Satin Natural Anodised
- Black - Black Powder Coat
- White - White Powder Coat

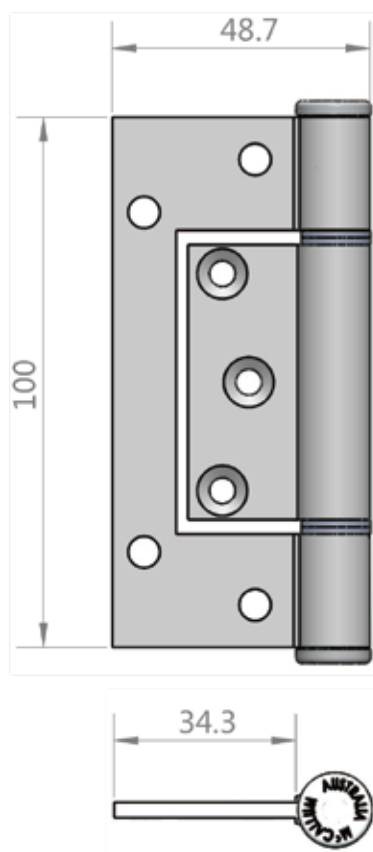
OLD CODE NO.

- A 105 MF

Code No. A 115

ALUMINIUM CENTRE KNUCKLE INTERFOLD HINGE

Code No. A 125



APPLICATION

- Suitable for aluminium entrance doors in high usage situation
- Suitable for either centre pocket or front edge glazing systems.
- Suitable for some timber door applications.
- Pre-drilling of the holes in the timber may be required.
- Possible use - bi-fold doors.

SPECIFICATION

- Alloy: High strength T.6 minimum tensile 254 mpa.
- Pin Dia: 4.7mm 304 Stainless Steel with machined chamfer both ends.
- Bushes: Flanged nylon.
- Knuckle: Round
- Aluminium Endcaps: Pressed-in interference fit.
- Maximum Weight Capacity: 20 kg - 3 hinges

INSTALLATION GUIDE ONLY

- Door thickness: Minimum 35mm.
- When using a door closer, we recommend a minimum of 3 hinges be used, with the top hinge located as high as possible. For excessive usage, a fourth hinge may be required.
- Standard Door: 2040 (H)x 820 (W)
- Locator allows for fast fixing.

FIXING

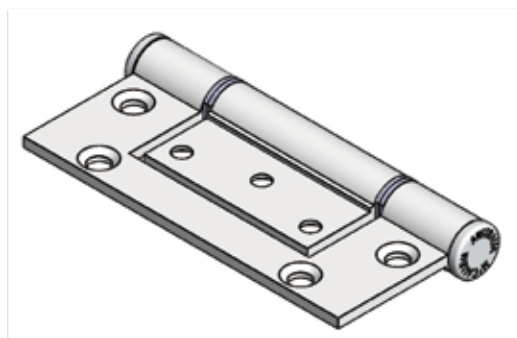
- Fastening screws supplied.
- Pop rivets are not recommended.

FINISH

- SNA - Satin Natural Anodised
- Black - Black Powder Coat
- White - White Powder Coat

OLD CODE NO.

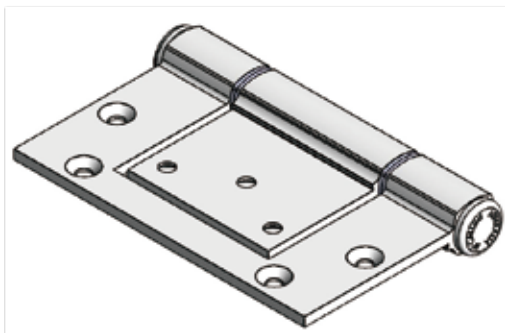
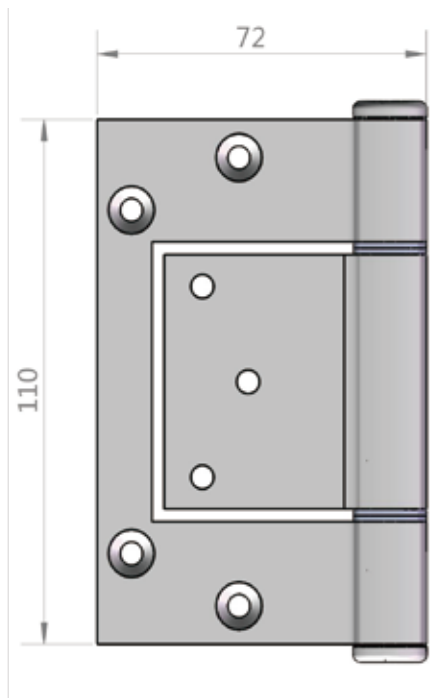
- A 105 SF



Code No. A 125

HEAVY DUTY ALUMINIUM INTERFOLD HINGE

Code No. A 155



APPLICATION

- Suitable for aluminium doors where extra throw is required.
- Suitable for either centre pocket or front edge glazing systems.
- Suitable for some timber door applications.
- Pre-drilling of the holes in the timber may be required.
- The A155 gives 15mm extra wide throw.

SPECIFICATION

- Alloy: High strength T.6 minimum tensile 254 mpa.
- Pin Dia: 6mm 304 Stainless Steel with machined chamfer both ends.
- Bushes: Flanged nylon.
- Knuckle: Squareline - Heavy Duty
- Aluminium Endcaps: Pressed-in interference fit.
- Maximum Weight Capacity: 40 kg - 3 hinges

INSTALLATION GUIDE ONLY

- Door thickness: Minimum 40mm.
- When using a door closer, we recommend a minimum of 3 hinges be used, with the top hinge located as high as possible. For excessive usage, a fourth hinge may be required.
- Standard Door: 2040 (H)x 820 (W)
- Oversize Door: Turn over for further information.
- Locator allows for fast fixing.

FIXING

- Fastening screws supplied.
- Pop rivets are not recommended.

FINISH

- SNA - Satin Natural Anodised
- Black - Black Powder Coat
- White - White Powder Coat

OLD CODE NO.

- A 105 MWTF

Code No. A 155

ALUMINIUM OFFSET INTERFOLD HINGE

Code No. A 165

APPLICATION

- Aluminium doors in medium usage situations.

SPECIFICATION

- Alloy: High strength T.6 minimum tensile 254 mpa.
- Pin Dia: 4.7mm 304 Stainless Steel with machined chamfer both ends.
- Bushes: Flanged nylon.
- Knuckle: Round
- Aluminium Endcaps: Pressed-in interference fit.
- Maximum Weight Capacity: 20 kg - 3 hinges

INSTALLATION GUIDE ONLY

- Door thickness: Minimum 32mm.
- When using a door closer, we recommend a minimum of 3 hinges be used, with the top hinge located as high as possible. For excessive usage, a fourth hinge may be required.
- Standard Door: 2040 (H)x 820 (W)
- Locator allows for fast fixing.

FIXING

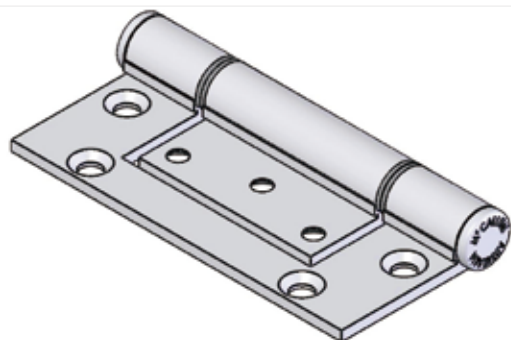
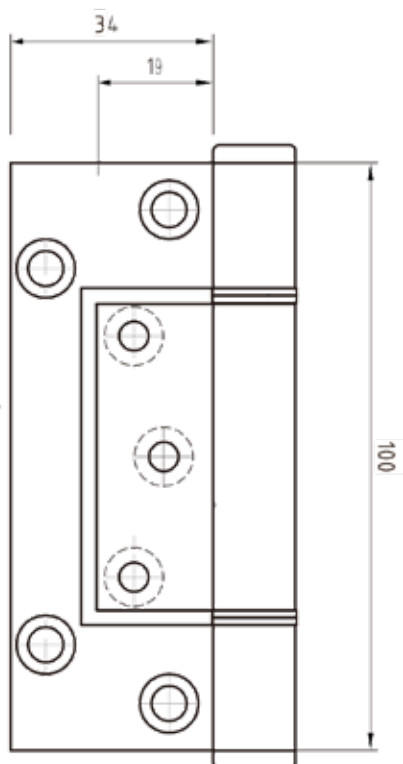
- Fastening screws supplied.
- Pop rivets are not recommended.

FINISH

- SNA - Satin Natural Anodised
- Black - Black Powder Coat
- White - White Powder Coat

OLD CODE NO.

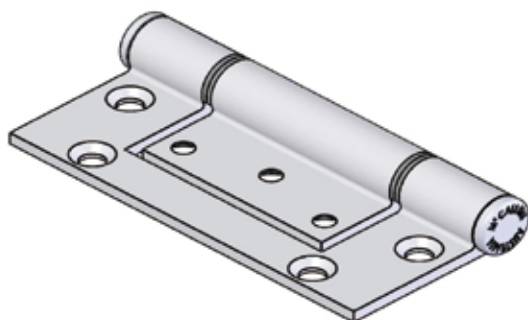
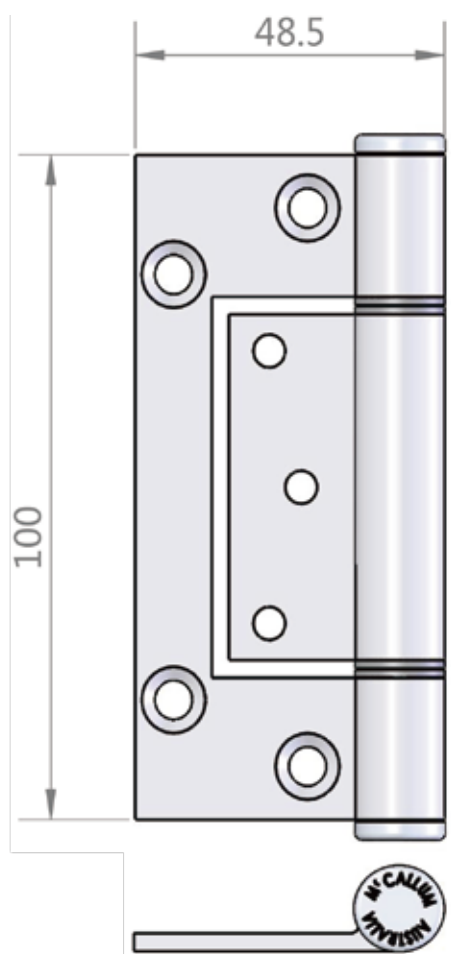
- A67 RF



Code No. A 165

ALUMINIUM OFFSET INTERFOLD HINGE

Code No. A 166



APPLICATION

- Suitable for aluminium entrance doors in medium usage situation.
- Suitable for either centre pocket or front edge glazing systems.
- Suitable for some timber door applications.
- Pre-drilling of the holes in the timber may be required.

SPECIFICATION

- Alloy: High strength T.6 minimum tensile 254 mpa.
- Pin Dia: 4.7mm 304 Stainless Steel with machined chamfer both ends.
- Bushes: Flanged nylon.
- Knuckle: Round
- Aluminium Endcaps: Pressed-in interference fit.
- Maximum Weight Capacity: 20 kg - 3 hinges

INSTALLATION GUIDE ONLY

- Door thickness: Minimum 35mm.
- When using a door closer, we recommend a minimum of 3 hinges be used, with the top hinge located as high as possible. For excessive usage, a fourth hinge may be required.
- Standard Door: 2040 (H)x 820 (W)
- Locator allows for fast fixing.

FIXING

- Fastening screws supplied.
- Pop rivets are not recommended.

FINISH

- SNA - Satin Natural Anodised
- Black - Black Powder Coat
- White - White Powder Coat

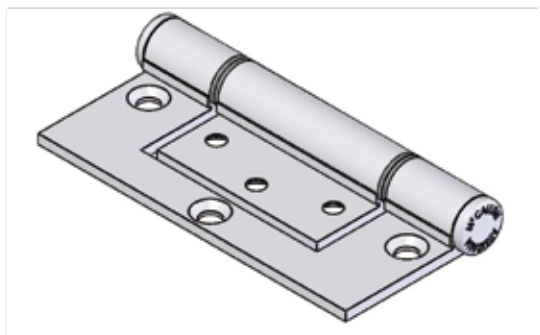
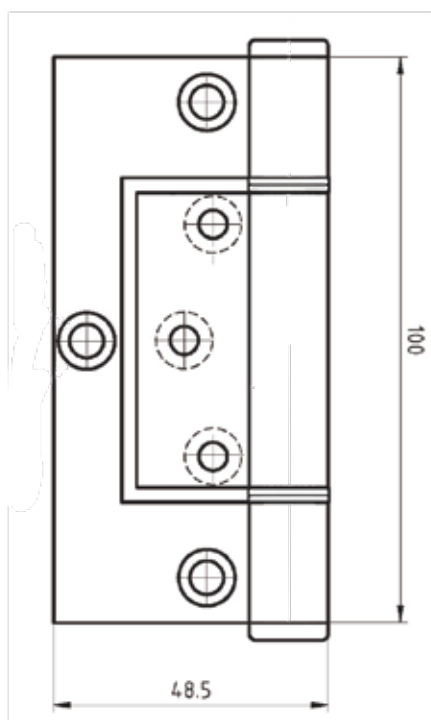
OLD CODE NO.

- A67 RN

Code No. A 166

ALUMINIUM OFFSET INTERFOLD HINGE

Code No. A 167



APPLICATION

- Suitable for aluminium entrance doors in medium usage situation.
- Suitable for either centre pocket or front edge glazing systems.
- Suitable for some timber door applications.
- Pre-drilling of the holes in the timber may be required.

SPECIFICATION

- Alloy: High strength T.6 minimum tensile 254 mpa.
- Pin Dia: 4.7mm 304 Stainless Steel with machined chamfer both ends.
- Bushes: Flanged nylon.
- Knuckle: Squareline - Heavy Duty
- Aluminium Endcaps: Pressed-in interference fit.
- Maximum Weight Capacity: 20 kg - 3 hinges

INSTALLATION GUIDE ONLY

- Door thickness: Minimum 35mm.
- When using a door closer, we recommend a minimum of 3 hinges be used, with the top hinge located as high as possible. For excessive usage, a fourth hinge may be required.
- Standard Door: 2040 (H)x 820 (W)
- Locator allows for fast fixing.

FIXING

- Fastening screws supplied.
- Pop rivets are not recommended.

FINISH

- SNA - Satin Natural Anodised
- Black - Black Powder Coat
- White - White Powder Coat

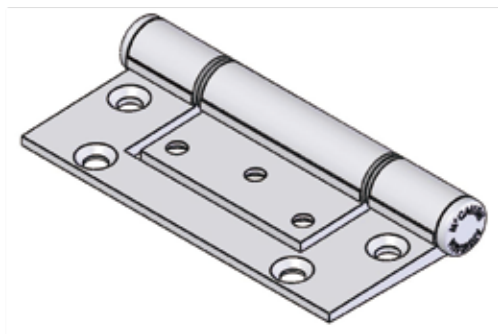
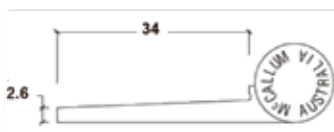
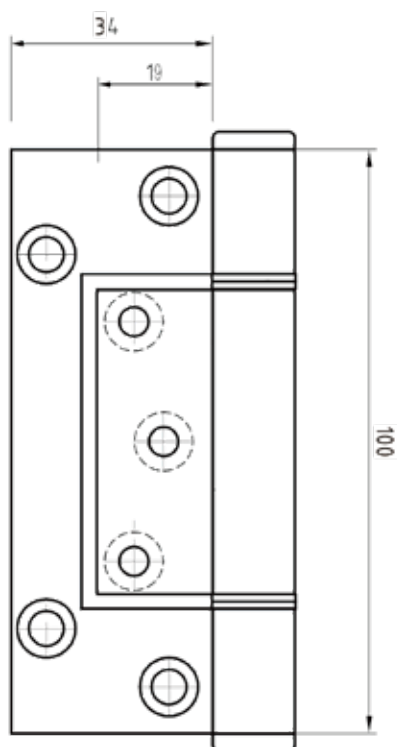
OLD CODE NO.

- A67 F

Code No. A 167

ALUMINIUM OFFSET INTERFOLD HINGE

Code No. A 168



APPLICATION

- Aluminium doors in medium usage situations.

SPECIFICATION

- Alloy: High strength T.6 minimum tensile 254 mpa.
- Pin Dia: 4.7mm 304 Stainless Steel with machined chamfer both ends.
- Bushes: Flanged nylon.
- Knuckle: Round
- Aluminium Endcaps: Pressed-in interference fit.
- Maximum Weight Capacity: 20 kg - 3 hinges

INSTALL ATION GUIDE ONLY

- Door thickness: Minimum 32mm.
- When using a door closer, we recommend a minimum of 3 hinges be used, with the top hinge located as high as possible. For excessive usage, a fourth hinge may be required.
- Standard Door: 2040 (H)x 820 (W)
- Locator allows for fast fixing.

FIXING

- Fastening screws supplied.
- Pop rivets are not recommended.

FINISH

- SNA - Satin Natural Anodised
- Black - Black Powder Coat
- White - White Powder Coat

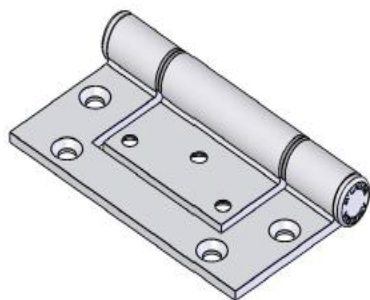
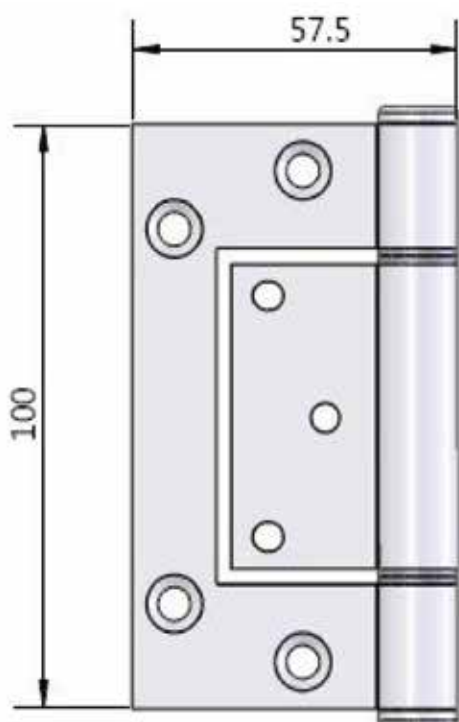
OLD CODE NO.

- A67 RTF

Code No. A 168

ALUMINIUM OFFSET INTERFOLD HINGE

Code No. A163



APPLICATION

- .Suitable for aluminium doors in medium usage situation.
- .Suitable for aluminium doors in medium usage situation.
- .Suitable for some timber door applications.
- .Pre-drilling of the holes in the timber may be required.

SPECIFICATION

- .**Alloy:** High strength T.6 minimum tensile 254 mpa.
- .**Pin Dia:** 4.7mm 304 Stainless Steel with machined chamfer both ends.
- .**Bushes:** Flanges nylon.
- .**Knuckle:** Round
- .**Aluminium Endcaps:** Pressed-in interference fit.
- .**Maximum Weight Capacity:** 20 kg - 3 hinges

INSTALLATION GUIDE ONLY

.Door thickness: Minimum 35mm

- .When using a door closer, we recommend a minimum of 3 hinges be used, with the top hinge located as high as possible. For excessive usage, a fourth hinge may be required.
- .Standard Door: 2040 (H) x 820 (W)

FIXING

- .Fastening screws not supplied.
- .Pop rivets are not recommended.

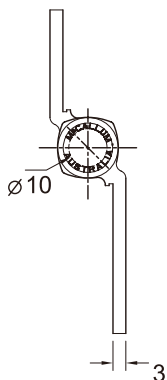
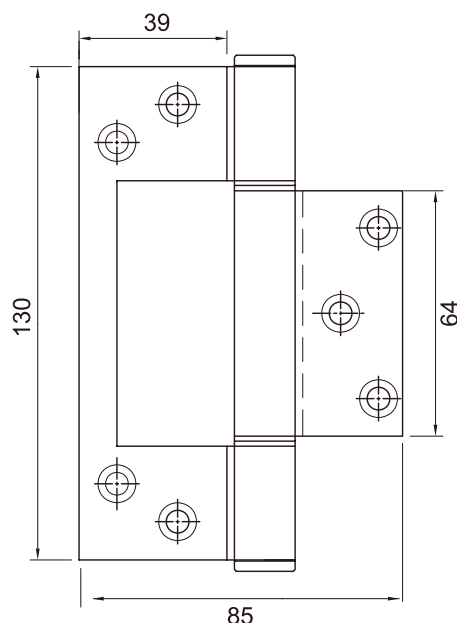
FINISH

- . SNA - Satin Natural Anodised.
- . Black - Black Powder Coat
- . White - White Powder Coat

Code No. A163

ALUMINIUM OFFSET INTERFOLD HINGE

Code No. A 107



APPLICATION

- Suitable for aluminium entrance doors in high usage situation
- Suitable for some timber door applications.
- Offset knuckle.

SPECIFICATION

- **Alloy:** High strength T.6 minimum tensile 254 mpa.
- **Pin Dia:** 6mm 304 Stainless Steel with machined chamfer both ends.
- **Bushes:** Flanged nylon.
- **Knuckle:** Squareline - Heavy Duty
- **Aluminium Endcaps:** Pressed-in interference fit.
- **Maximum Weight Capacity:** 80 kg - 3 hinges

INSTALLATION GUIDE ONLY

- **Door thickness: Minimum 40mm.**
- When using a door closer, we recommend a minimum of 3 hinges be used, with the top hinge located as high as possible. For excessive usage, a fourth hinge may be required.
- Standard Door: 2040 (h) x 820 (W)
- Locator allows for fast fixing.

FIXING

- **Fastening screws supplied.**
- Pop rivets are not recommended.

FINISH

- SNA - Satin Natural Anodised
- Black - Black Powder Coat
- White - White Powder Coat

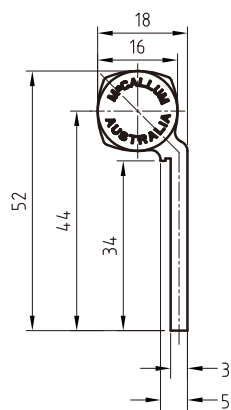
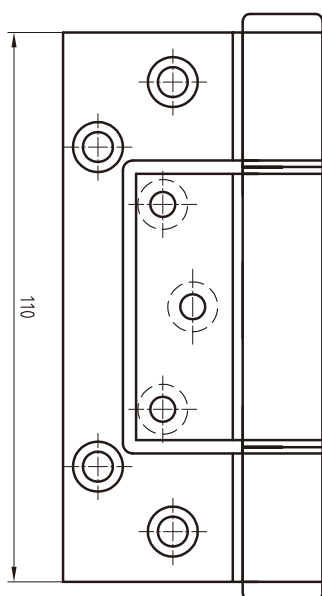
OLD CODE NO.

- A107 RLF

Code No. A 107

ALUMINIUM OFFSET INTERFOLD HINGE

Code No. A 117



APPLICATION

- Suitable for aluminium entrance doors in high usage situation
- Suitable for some timber door applications.
- Offset knuckle.

SPECIFICATION

- **Alloy:** High strength T.6 minimum tensile 254 mpa.
- **Pin Dia:** 6mm 304 Stainless Steel with machined chamfer both ends.
- **Bushes:** Flanged nylon.
- **Knuckle:** Squareline - Heavy Duty
- **Aluminium Endcaps:** Pressed-in interference fit.
- **FOR HEAVIER DOORS, SEE THE LARGER VERSION, A107. IT IS 130MM LONG AND HAS A WEIGHT CAPACITY OF 80KG.**
- **Maximum Weight Capacity:** 50 kg - 3 hinges

INSTALLATION GUIDE ONLY

- **Door thickness: Minimum 34mm.**
- When using a door closer, we recommend a minimum of 3 hinges be used, with the top hinge located as high as possible. For excessive usage, a fourth hinge may be required.
- Standard Door: 2040 (h) x 820 (W)
- Locator allows for fast fixing.

FIXING

- **Fastening screws supplied.**
- Pop rivets are not recommended.

FINISH

- SNA - Satin Natural Anodised
- Black - Black Powder Coat
- White - White Powder Coat

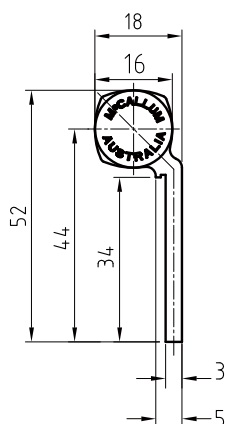
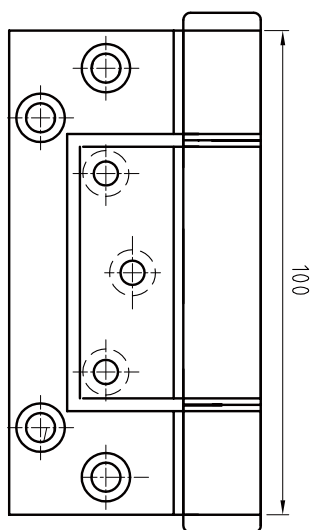
OLD CODE NO.

- A107 RF

Code No. A 117

ALUMINIUM OFFSET INTERFOLD HINGE

Code No. A 127



APPLICATION

- Suitable for aluminium entrance doors in high usage situation
- Suitable for some timber door applications.
- Suitable for some timber door applications.
- Pre-drilling of the holes in the timber may be required.

SPECIFICATION

- **Alloy:** High strength T.6 minimum tensile 254 mpa.
- **Pin Dia:** 6mm 304 Stainless Steel with machined chamfer both ends.
- **Bushes:** Flanged nylon.
- **Knuckle:** Squareline - Heavy Duty
- **Aluminium Endcaps:** Pressed-in interference fit.
- **Maximum Weight Capacity:** 40 kg - 3 hinges

INSTALLATION GUIDE ONLY

- **Door thickness: Minimum 32mm.**
- When using a door closer, we recommend a minimum of 3 hinges be used, with the top hinge located as high as possible. For excessive usage, a fourth hinge may be required.
- Standard Door: 2040 (H) x 820 (W)
- Locator allows for fast fixing.

FIXING

- **Fastening screws supplied.**
- Pop rivets are not recommended.

FINISH

- SNA - Satin Natural Anodised
- Black - Black Powder Coat
- White - White Powder Coat

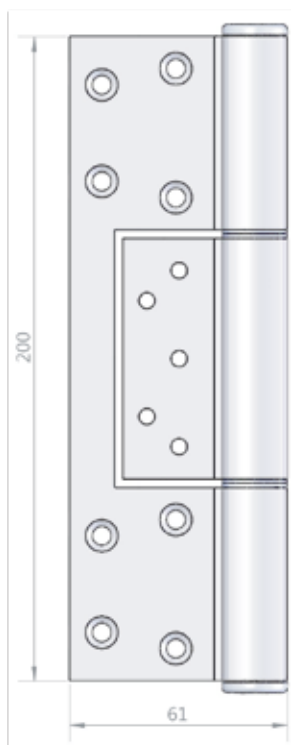
OLD CODE NO.

- A107 SHF

Code No. A 127

HEAVY DUTY ALUMINIUM INTERFOLD HINGE

Code No. A 137



APPLICATION

- Suitable for aluminium entrance doors in high usage situation
- Suitable for either centre pocket or front edge glazing systems.
- Suitable for some timber door applications.
- Pre-drilling of the holes in the timber may be required.

SPECIFICATION

- Alloy: High strength T.6 minimum tensile 254 mpa.
- Pin Dia: 6mm 304 Stainless Steel with machined chamfer both ends.
- Bushes: Flanged nylon.
- Knuckle: Squareline - Heavy Duty
- Aluminium Endcaps: Pressed-in interference fit.
- Maximum Weight Capacity: 100 kg - 3 hinges

INSTALLATION GUIDE ONLY

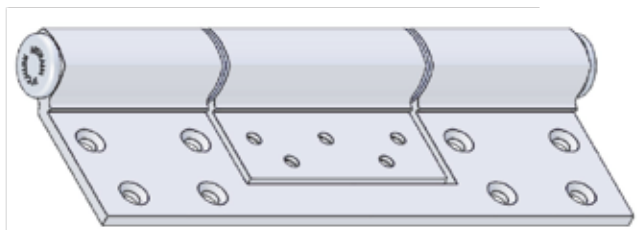
- Door thickness: Minimum 40mm.
- When using a door closer, we recommend a minimum of 3 hinges be used, with the top hinge located as high as possible. For excessive usage, a fourth hinge may be required.
- Standard Door: 2040 (h) x 820 (W)
- Locator allows for fast fixing.

FIXING

- Fastening screws supplied.
- Pop rivets are not recommended.

FINISH

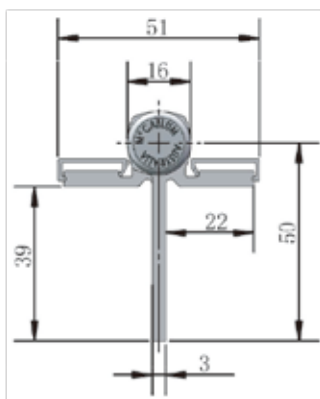
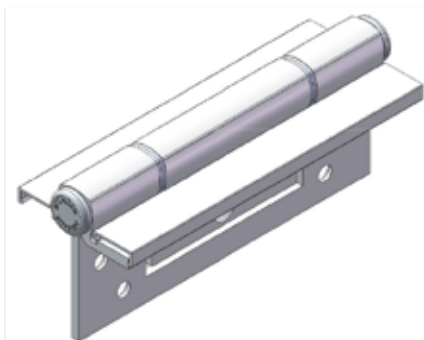
- SNA - Satin Natural Anodised
- Black - Black Powder Coat
- White - White Powder Coat



Code No. A 137

HEAVY DUTY ALUMINIUM FAST - FIX HINGE

Code No. A 119



APPLICATION

- Suitable for aluminium entrance doors in high usage situation
- Suitable for either centre pocket or front edge glazing systems.
- Suitable for some timber door applications.
- Pre-drilling of the holes in the timber may be required.
- Cover caps are to hide screws on the wings for a more contemporary and smooth finish.

SPECIFICATION

- Alloy: High strength T.6 minimum tensile 254 mpa.
- Pin Dia: 6mm 304 Stainless Steel with machined chamfer both ends.
- Bushes: Flanged nylon.
- Knuckle: Squareline - Heavy Duty
- Aluminium Endcaps: Pressed-in interference fit.
- Maximum Weight Capacity: 100 kg - 3 hinges

INSTALLATION GUIDE ONLY

- Door thickness: Minimum 40mm.
- When using a door closer, we recommend a minimum of 3 hinges be used, with the top hinge located as high as possible. For excessive usage, a fourth hinge may be required.
- Standard Door: 2040 (h) x 820 (W)
- Locator allows for fast fixing.

FIXING

- Fastening screws supplied.
- Pop rivets are not recommended.

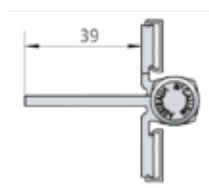
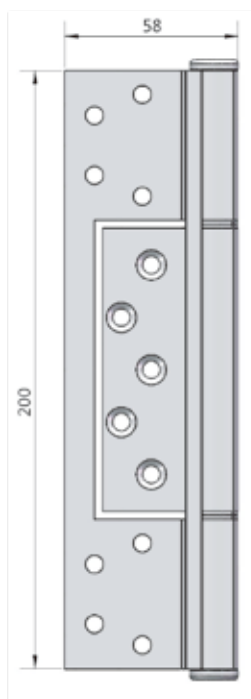
FINISH

- SNA - Satin Natural Anodised
- Black - Black Powder Coat
- White - White Powder Coat

Code No. A 119

HEAVY DUTY ALUMINIUM INTERFOLD HINGE

Code No. A 129



APPLICATION

- Suitable for aluminium entrance doors in high usage situation
- Suitable for either centre pocket or front edge glazing systems.
- Suitable for some timber door applications.
- Pre-drilling of the holes in the timber may be required.
- Cover caps are to hide screws on the wings for a more contemporary and smooth finish.

SPECIFICATION

- Alloy: High strength T.6 minimum tensile 254 mpa.
- Pin Dia: 6mm 304 Stainless Steel with machined chamfer both ends.
- Bushes: Flanged nylon.
- Knuckle: Squareline - Heavy Duty
- Aluminium Endcaps: Pressed-in interference fit.
- Maximum Weight Capacity: 120 kg - 3 hinges

INSTALLATION GUIDE ONLY

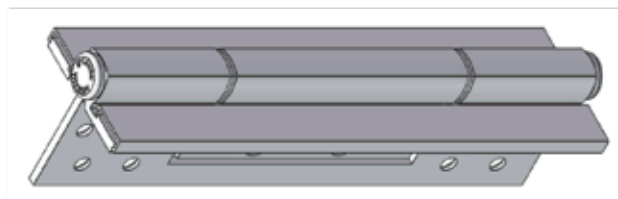
- Door thickness: Minimum 40mm.
- When using a door closer, we recommend a minimum of 3 hinges be used, with the top hinge located as high as possible. For excessive usage, a fourth hinge may be required.
- Standard Door: 2040 (h) x 820 (W)
- Locator allows for fast fixing.

FIXING

- Fastening screws supplied.
- Pop rivets are not recommended.

FINISH

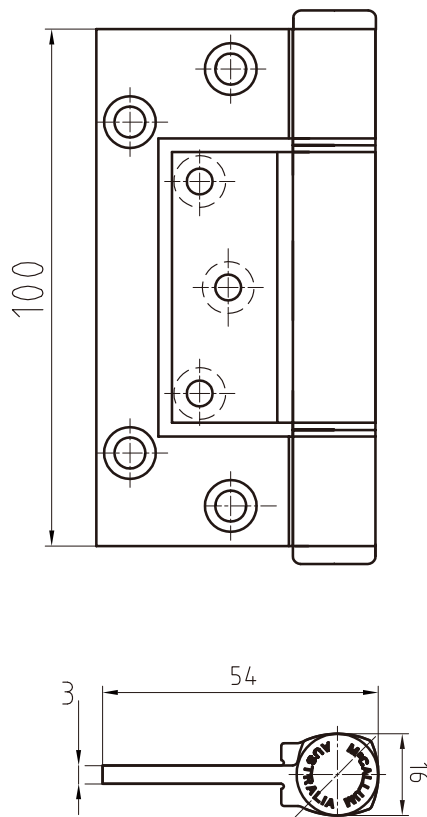
- SNA - Satin Natural Anodised
- Black - Black Powder Coat
- White - White Powder Coat



Code No. A 129

HEAVY DUTY ALUMINIUM INTERFOLD HINGE

Code No. A 174



APPLICATION

- Suitable for aluminium entrance doors in high usage situation
- Suitable for some timber door applications.
- Suitable for some timber door applications.
- Pre-drilling of the holes in the timber may be required.

SPECIFICATION

- **Alloy:** High strength T.6 minimum tensile 254 mpa.
- **Pin Dia:** 6mm 304 Stainless Steel with machined chamfer both ends.
- **Bushes:** Flanged nylon.
- **Knuckle:** Squareline - Heavy Duty
- **Aluminium Endcaps:** Pressed-in interference fit.
- **Maximum Weight Capacity:** 40 kg - 3 hinges

INSTALLATION GUIDE ONLY

- **Door thickness: Minimum 34mm.**
- When using a door closer, we recommend a minimum of 3 hinges be used, with the top hinge located as high as possible. For excessive usage, a fourth hinge may be required.
- Standard Door: 2040 (H) x 820 (W)
- Locator allows for fast fixing.
- **THIS HINGE IS DESIGNED WITH A 1.0mm (APPROX.) OFFSET.**
- **YOU NEED TO ALLOW A 4.5mm SPACE BETWEEN THE DOOR AND THE JAMB DUE TO THE OFFSET. THIS MAY HELP COMPENSATE FOR A DISTORTED DOOR WHEN CLOSED. THE A115 SHOULD BE CONSIDERED IF AN OFFSET HINGE IS NOT REQUIRED.**

FIXING

- **Fastening screws supplied.**
- Pop rivets are not recommended.

FINISH

- SNA - Satin Natural Anodised
- Black - Black Powder Coat
- White - White Powder Coat

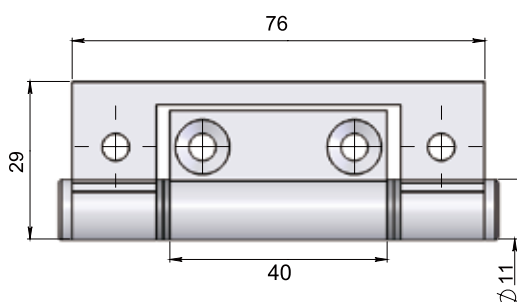
OLD CODE NO.

- A74 HBF

Code No. A 174

ALUMINIUM SMALL INTERFOLD HINGE

Code No. A 176



APPLICATION

- Control cabinet doors, small windows and screens.

SPECIFICATION

- Alloy:** High strength T.6 minimum tensile 254 mpa.
- Pin Dia:** 4mm 304 Stainless Steel with machined chamfer both ends.
- Bushes:** Flanged nylon.
- Knuckle:** Round
- Endcaps:** Interference fit caps.

FIXING

- Fastening screws not supplied.**
- Pop rivets can be used.

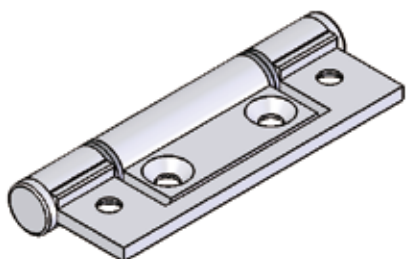
FINISH

- SNA - Satin Natural Anodised
- Black - Black Powder Coat
- White - White Powder Coat



OLD CODE NO.

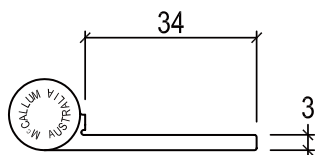
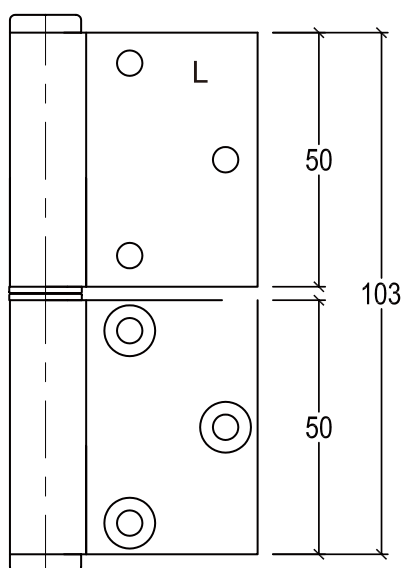
- A 7629



Code No. A 176

ALUMINIUM LIFT - OFF HINGE

Code No. A 101



APPLICATION

- For LEFT-HAND use.
- Lift-off facility for aluminium and timber doors.

SPECIFICATION

- **Alloy:** High strength T.6 minimum tensile 254 mpa.
- **Pin Dia:** 4.7mm 304 stainless steel with machined chamfers.
- **Bushes:** Flanged nylon.
- **Knuckle:** Round.
- **Aluminium Endcaps:** Pressed-in interference fit.
- **Pin Length:** 25mm.
- **Maximum Weight Capacity:** 25 kg - 3 hinges

INSTALLATION GUIDE ONLY

- **HANDING IS DETERMINED AS BELOW:**
RIGHT HAND - with the door coming towards you, the hinges are on the right.
LEFT HAND - with the door coming towards you, the hinges are on the left.
- **Door thickness: Minimum 35mm.**
- When using a door closer, we recommend a minimum of 3 hinges be used, with the top hinge located as high as possible. For excessive usage, a fourth hinge may be required.
- Standard Door: 2040 (h) x 820 (W)
- For lift-off clearance, we recommend a 40mm gap, minimum at the top of the door.

FIXING

- **Fastening screws supplied.**
- Pop rivets are not recommended.

FINISH

- Satin Natural Anodised only.

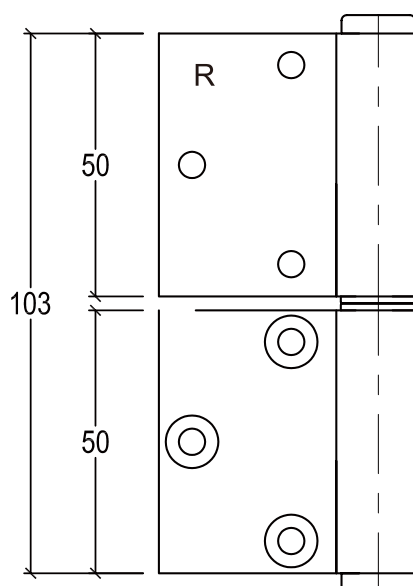
OLD CODE NO.

- A102 LHF

Code No. A 101

ALUMINIUM LIFT - OFF HINGE

Code No. A 102



APPLICATION

- For RIGHT-HAND use.
- Lift-off facility for aluminium and timber doors.

SPECIFICATION

- **Alloy:** High strength T.6 minimum tensile 254 mpa.
- **Pin Dia:** 4.7mm 304 stainless steel with machined chamfers.
- **Bushes:** Flanged nylon.
- **Knuckle:** Round.
- **Aluminium Endcaps:** Pressed-in interference fit.
- **Pin Length:** 25mm.
- **Maximum Weight Capacity:** 25 kg - 3 hinges

INSTALLATION GUIDE ONLY

- **HANDING IS DETERMINED AS BELOW:**
RIGHT HAND - with the door coming towards you, the hinges are on the right.
LEFT HAND - with the door coming towards you, the hinges are on the left.
- **Door thickness: Minimum 35mm.**
- When using a door closer, we recommend a minimum of 3 hinges be used, with the top hinge located as high as possible. For excessive usage, a fourth hinge may be required.
- Standard Door: 2040 (h) x 820 (W)
- For lift-off clearance, we recommend a 40mm gap, minimum at the top of the door.

FIXING

- **Fastening screws supplied.**
- Pop rivets are not recommended.

FINISH

- Satin Natural Anodised only.

OLD CODE NO.

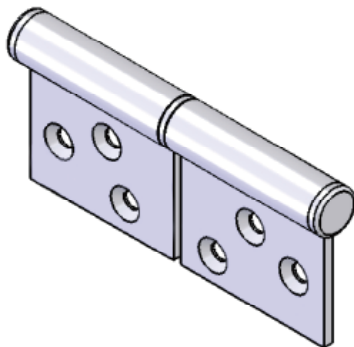
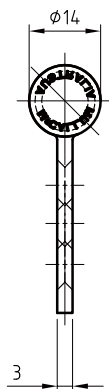
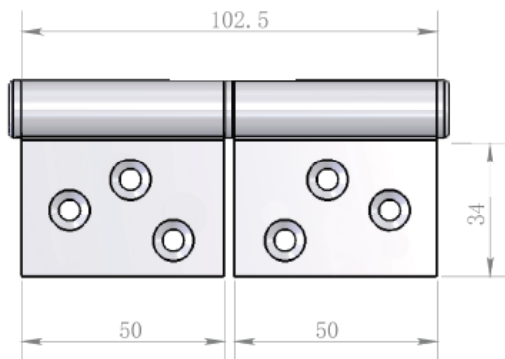
- A102 RHF



Code No. A 102

ALUMINIUM LIFT - OFF HINGE

Code No. A 103 Universal Lift - Off



APPLICATION

- Lift-off facility for aluminium and timber doors.

SPECIFICATION

- **Alloy:** High strength T.6 minimum tensile 254 mpa.
- **Pin Dia:** 4.7mm 304 stainless steel with machined chamfers.
- **Bushes:** Flanged nylon.
- **Knuckle:** Round.
- **Aluminium Endcaps:** Pressed-in interference fit.
- **Pin Length:** 15mm.
- **Maximum Weight Capacity:** 25 kg - 3 hinges

INSTALLATION GUIDE ONLY

- **These hinges are designed to suit left and right hand installations making it easier for specifying.**
- The leaves are central on the knuckle with double countersinking.
- Two of the screw holes in the leaf align with metal frame pattern. The third hole will require drilling and tapping of the frame.
- 3 x 12mm x M5 metal screws are supplied for the metal frame.
- When using a door closer, we recommend a minimum of 3 hinges be used, with the top hinge located as high as possible. For excessive usage, a fourth hinge may be required.
- Standard Door: 2040 (h) x 820 (W)
- For lift-off clearance, we recommend a 30mm gap, minimum at the top of the door.

FIXING

- **Fastening screws supplied.**
- Pop rivets are not recommended.

FINISH

- Satin Natural Anodised only.

Code No. A 103

ALUMINIUM LOOSE PIN FAST - FIX HINGE

Code No. A 173

APPLICATION

- Suitable for aluminium doors in medium usage situation
- Suitable for some timber door applications. Pre-drilling of the holes in the timber may be required.
- **Lift-off facility.**

SPECIFICATION

- **Alloy:** High strength T.6 minimum tensile 254 mpa.
- **Pin Dia:** 4.7mm 304 Stainless Steel with machined chamfer both ends.
- **Bushes:** Flanged nylon.
- **Knuckle:** Round
- **Aluminium Endcaps:** Pressed-in interference fit.
- Pressed in lower endcap with sliding fit for pin.
- Top endcap has finger groove for easy removal of pin for the lift-off.
- **Maximum Weight Capacity:** 20 kg - 3 hinges

INSTALLATION GUIDE ONLY

- **Door thickness: Minimum 35mm.**
- When using a door closer, we recommend a minimum of 3 hinges be used, with the top hinge located as high as possible. For excessive usage, a fourth hinge may be required.
- Standard Door: 2040 (H) x 820 (W)
- Locator allows for fast fixing.
- Ensure that the lift-off endcap is located to the top.

FIXING

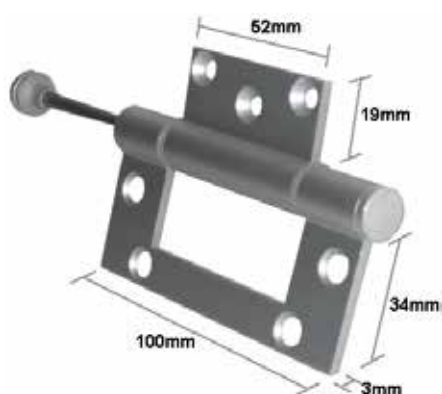
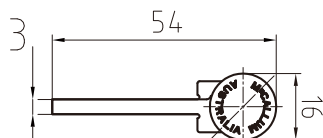
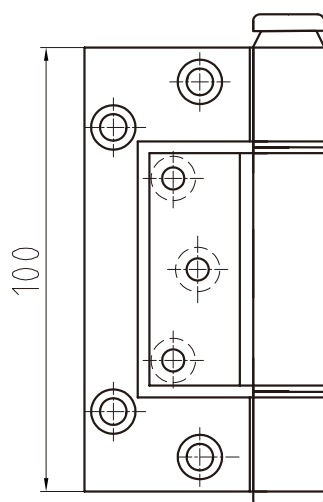
- **Fastening screws not supplied.**
- Pop rivets are not recommended.

FINISH

- Satin Natural Anodised only.

OLD CODE NO.

- A74 LB



Code No. A 173

ALUMINIUM PIVOT HINGES

Code No. P 435

APPLICATION

- For flush service closet doors.
- For wardrobes, coat & linen closets.
- For hatches and access panels etc.

ADVANTAGES

- Door frames and architraves can be eliminated.
- Simple tools and limited trade skills required.
- Painting cost reduced to roller work.
- Standard plasterboard trim and accessories.

SPECIFICATION

- Plates & Angles: Aluminium 6063 T6
- Rivet Material: Steel, Zinc Plated
- Bearing Bush: Nylon 6 (modified)
- Geometry: Centre line non-handed pivots
- Testing: 300,000 Cycles (50kg SC Door)

INSTALLATION GUIDE ONLY

- Door thickness: 35mm.
- Standard Door: Solid Core 2400 (h)x 920 (W)x 50 kg
- Please turn over for greater detail.

FIXING

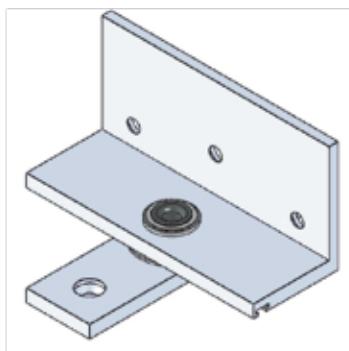
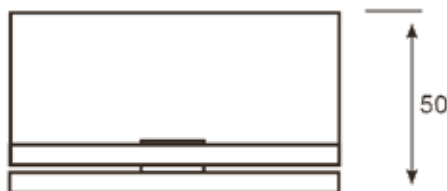
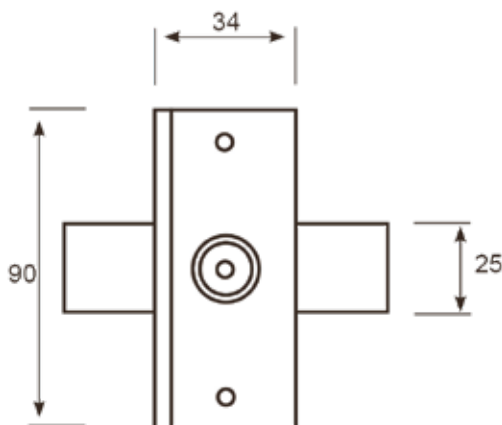
- Fastening screws supplied.
- Pop rivets are not recommended.

FINISH

- Silver-Grey Powder coated
- Black powder coating

NOTES

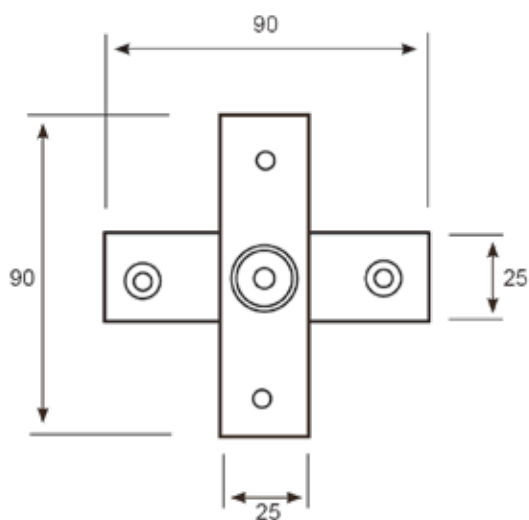
- Product Design: Howard Styles - Architect



Code No. P 435

ALUMINIUM PIVOT HINGES

Code No. P 436



APPLICATION

- For ceiling and duct hatches, laundry chutes.
- Windows and shutters, awning flaps ventilators and hoppers.
- Joinery and furniture.

ADVANTAGES

- Simple hand tool installation.
- No special skills required.
- Non-handed, universal pivots

SPECIFICATION

- Plates: Aluminium T6 temper
- Rivet Material: Steel, Zinc Plated
- Bearing Bush: Nylon 6
- Geometry: Non-handed, universal pivots
- Max Load: 50kg Door

INSTALLATION GUIDE ONLY

- Door thickness: 35mm.
- Please turn over for greater detail.

FIXING

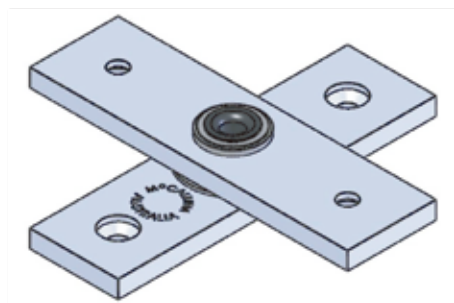
- Fastening screws supplied.
- Pop rivets are not recommended.

FINISH

- Silver-Grey Powder coated
- Black powder coating

NOTES

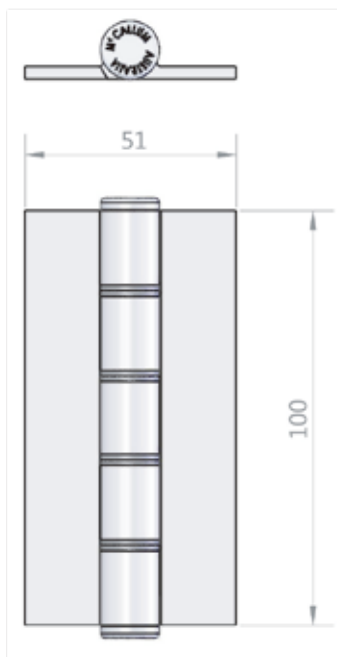
- Product Design: Howard Styles - Architect



Code No. P 436

ALUMINIUM CONCEALED BUTT HINGE

Code No. A 140



APPLICATION

- Suitable for Aluminium doors and partitions in medium usage situations.

SPECIFICATION

- Alloy: High strength T.6 minimum tensile 254 mpa.
- Pin Dia: 4.7mm 304 Stainless Steel with machined chamfer both ends.
- Bushes: Flanged nylon.
- Knuckle: Round
- Aluminium Endcaps: Pressed-in interference fit.
- Maximum Weight Capacity: 20 kg - 3 hinges

INSTALLATION GUIDE ONLY

- Door thickness: Minimum 35mm.
- When using a door closer, we recommend a minimum of 3 hinges be used, with the top hinge located as high as possible. For excessive usage, a fourth hinge may be required.
- Standard Door: 2040 (h) x 820 (W)

FIXING

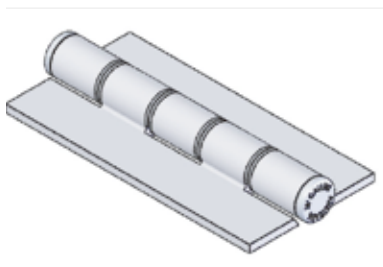
- Fastening screws not supplied.
- Concealed fix.
- Pop rivets are not recommended.

FINISH

- Satin Natural Anodised only.

OLD CODE NO.

- AB 4532



Code No. A 140

ALUMINIUM CONCEALED BUTT HINGE

Code No. A 141

APPLICATION

- Suitable for Aluminium doors and partitions in medium usage situations.

SPECIFICATION

- Alloy: High strength T.6 minimum tensile 254 mpa.
- Pin Dia: 4.7mm 304 Stainless Steel with machined chamfer both ends.
- Bushes: Flanged nylon.
- Knuckle: Round
- Aluminium Endcaps: Pressed-in interference fit.
- Maximum Weight Capacity: 20 kg - 3 hinges

INSTALLATION GUIDE ONLY

- Door thickness: Minimum 35mm.
- When using a door closer, we recommend a minimum of 3 hinges be used, with the top hinge located as high as possible. For excessive usage, a fourth hinge may be required.
- Standard Door: 2040 (h) x 820 (W)

FIXING

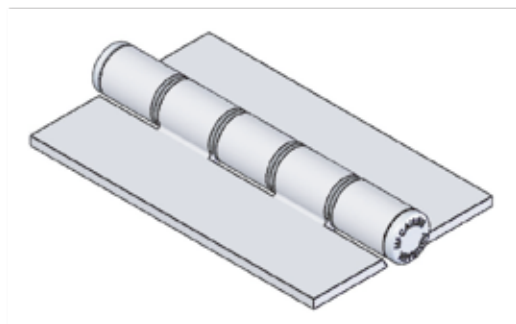
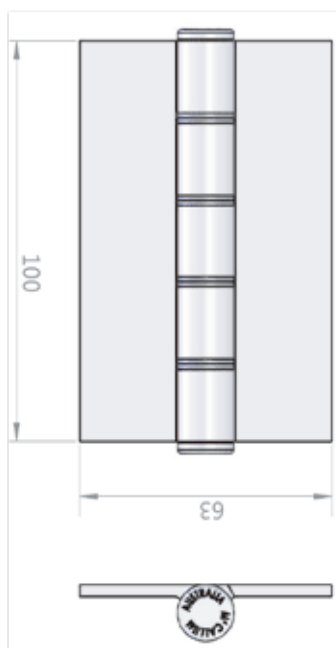
- Fastening screws not supplied.
- Concealed fix.
- Pop rivets are not recommended.

FINISH

- Silver-Grey Powder coated
- Black powder coating

OLD CODE NO.

- AB 4532



Code No. A 141

ALUMINIUM CONCEALED BUTT HINGE

Code No. A 142

APPLICATION

- Suitable for Aluminium doors in medium usage situations.

SPECIFICATION

- Alloy: High strength T.6 minimum tensile 254 mpa.
- Pin Dia: 4.7mm 304 Stainless Steel with machined chamfer both ends.
- Bushes: Flanged nylon.
- Knuckle: Round
- Aluminium Endcaps: Pressed-in interference fit.
- Maximum Weight Capacity: 20 kg - 3 hinges

INSTALLATION GUIDE ONLY

- Door thickness: Minimum 35mm.
- When using a door closer, we recommend a minimum of 3 hinges be used, with the top hinge located as high as possible. For excessive usage, a fourth hinge may be required.
- Standard Door: 2040 (h) x 820 (W)

FIXING

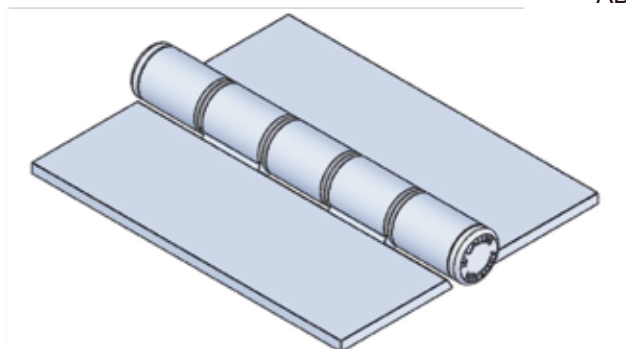
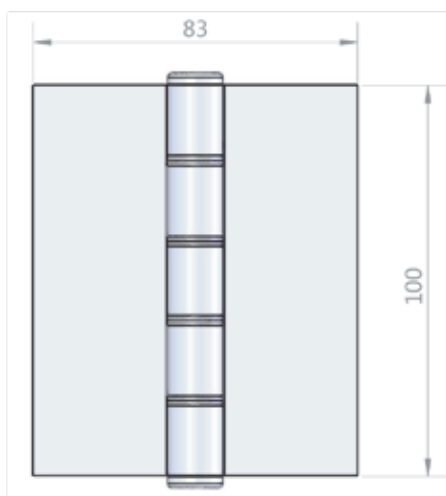
- Fastening screws not supplied.
- Concealed fix.
- Pop rivets are not recommended.

FINISH

- Silver-Grey Powder coated
- Black powder coating

OLD CODE NO.

- AB 45



Code No. A 142

ALUMINIUM COMBINATION BUTT HINGE

Code No. A 143

APPLICATION

- Suitable for attaching Timber doors to timber jamb.

SPECIFICATION

- Alloy: High strength T.6 minimum tensile 254 mpa.
- Pin Dia: 4.7mm 304 Stainless Steel with machined chamfer both ends.
- Bushes: Flanged nylon.
- Knuckle: Round
- Aluminium Endcaps: Pressed-in interference fit.
- Maximum Weight Capacity: 20 kg - 3 hinges

INSTALLATION GUIDE ONLY

- Door thickness: Minimum 35mm
- When using a door closer, we recommend a minimum of 3 hinges be used, with the top hinge located as high as possible. For excessive usage a fourth hinge may be required.
- Standard Door: 2040 (H) x 820 (W)

FIXING

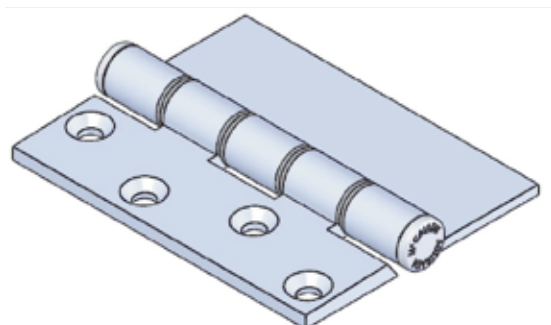
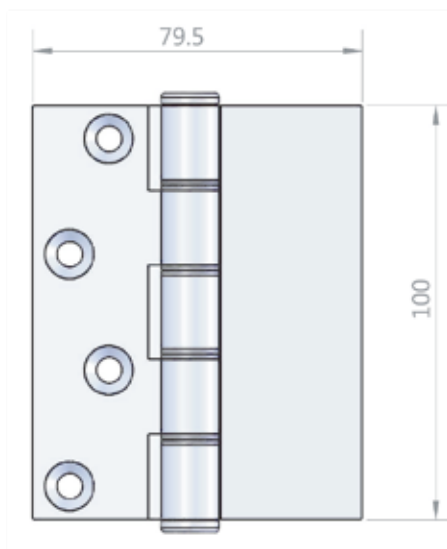
- Fastening screws not supplied.
- Concealed fix.
- Pop rivets are not recommended.

FINISH

- Satin Natural Anodised only.

OLD CODE NO.

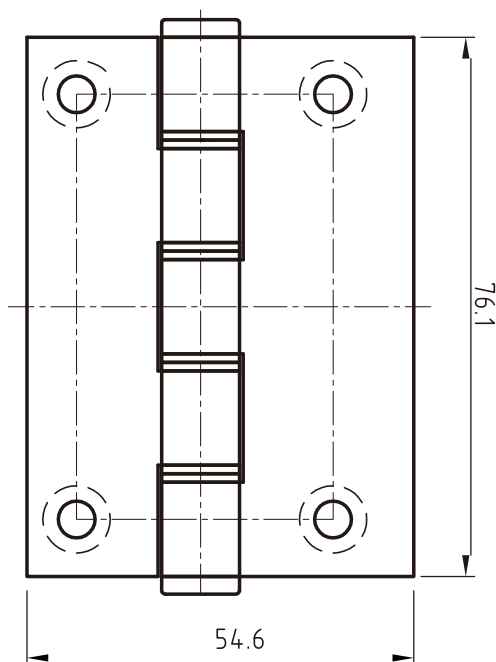
- AB 4550



Code No. A 143

ALUMINIUM DOOR & WINDOW BUTT HINGE

Code No. A 146



APPLICATION

- Suitable for attaching Aluminium doors and windows to aluminium frames.

SPECIFICATION

- **Alloy:** High strength T.6 minimum tensile 254 mpa.
- **Pin Dia:** 4mm 304 Stainless Steel with machined chamfer both ends.
- **Bushes:** Flanged nylon.
- **Knuckle:** Round
- **Aluminium Endcaps:** Pressed-in interference fit.

FIXING

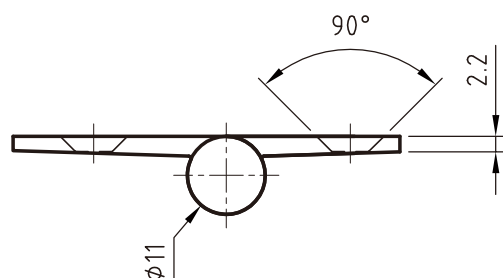
- **Fastening screws not supplied.**
- Pop rivets are not recommended.

FINISH

- Satin Natural Anodised only.
- Black powder coating

OLD CODE NO.

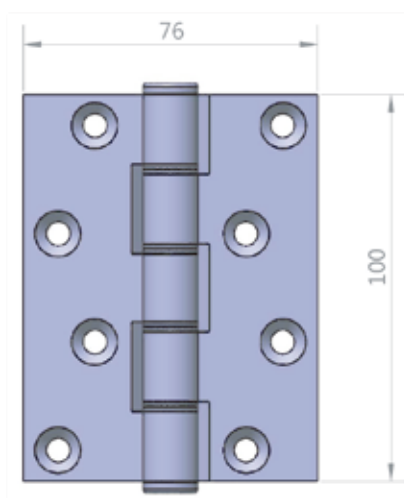
- AB 46 A



Code No. A 146

ALUMINIUM BUTT HINGE

Code No. A 150



APPLICATION

- Suitable for attaching Timber doors to timber jamb.
- May be used with a specifically prepared aluminium jamb with mounting plates.

SPECIFICATION

- Alloy: High strength T.6 minimum tensile 254 mpa.
- Pin Dia: 4.7mm 304 Stainless Steel with machined chamfer both ends.
- Bushes: Flanged nylon.
- Knuckle: Round
- Aluminium Endcaps: Pressed-in interference fit.
- Maximum Weight Capacity: 20 kg - 3 hinges

INSTALLATION GUIDE ONLY

- Door thickness: Minimum 32mm
- When using a door closer, we recommend a minimum of 3 hinges be used, with the top hinge located as high as possible. For excessive usage a fourth hinge may be required.
- Standard Door: 2040 (H) x 820 (W)

FIXING

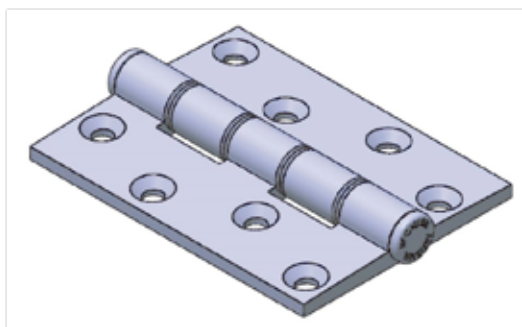
- Fastening screws not supplied.
- 12 gauge stainless steel screws are recommended.
- Pop rivets are not recommended.

FINISH

- Satin Natural Anodised only.

OLD CODE NO.

- AB 50



Code No. A 150

ALUMINIUM CABINET BUTT HINGE

Code No. A 151

APPLICATION

- Suitable for control cabinet doors.

SPECIFICATION

- **Alloy:** High strength T.6 minimum tensile 254 mpa.
- **Pin Dia:** 4mm 304 Stainless Steel with machined chamfer both ends.
- **Bushes:** Flanged nylon.
- **Knuckle:** Round
- **Aluminium Endcaps:** Pressed-in interference fit.

FIXING

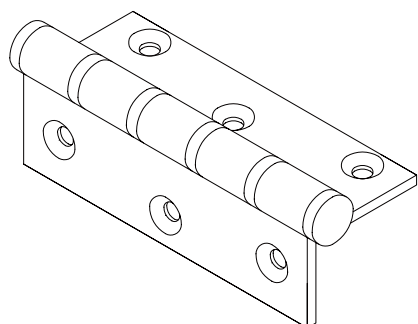
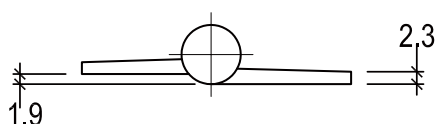
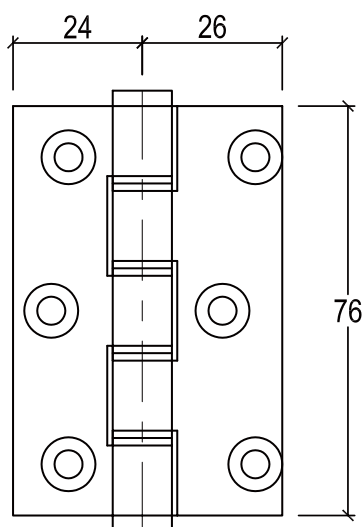
- **Fastening screws not supplied.**
- Minimum door thickness is 17mm.
- Pop rivets are not recommended.

FINISH

- Satin Natural Anodised only.

OLD CODE NO.

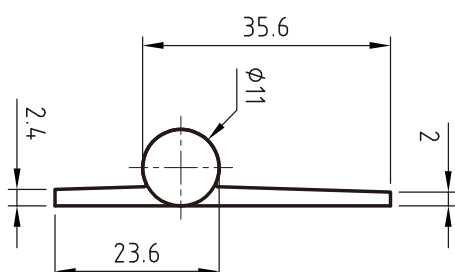
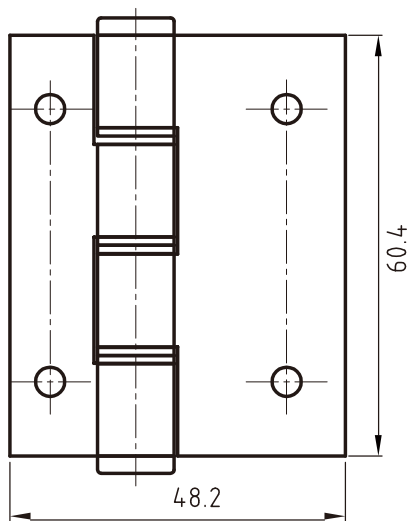
- AB 51



Code No. A 151

ALUMINIUM WINDOW & SHOWER SCREEN BUTT HINGE

Code No. A 170



APPLICATION

- Suitable for Aluminium windows and frames.
- Suitable for some shower screen installations.

SPECIFICATION

- **Alloy:** High strength T.6 minimum tensile 254 mpa.
- **Pin Dia:** 4mm 304 Stainless Steel with machined chamfer both ends.
- **Bushes:** Flanged nylon.
- **Knuckle:** Round
- **Aluminium Endcaps:** Pressed-in interference fit.

FIXING

- **Fastening screws not supplied.**
- Pop rivets are not recommended.

FINISH

- Satin Natural Anodised only.

OLD CODE NO.

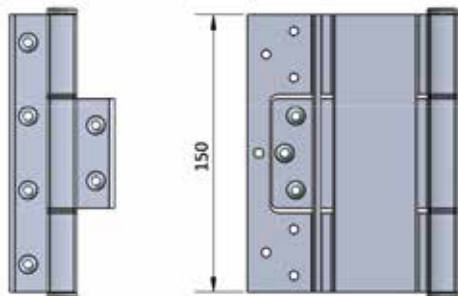
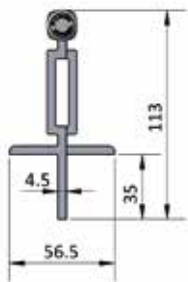
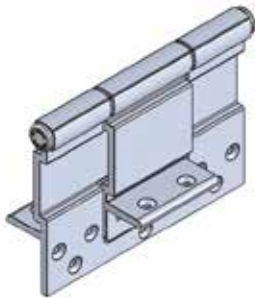
- AB 70



Code No. A 170

HEAVY DUTY ALUMINIUM INTERFOLD HINGE

Code No. A171



APPLICATION

- Suitable for timber doors in medium usage situations.
- Suitable for either centre pocket or front edge glazing systems.
- Suitable for some timber door applications.
- Pre-drilling of the holes in the timber may be required.

SPECIFICATION

- **Alloy:** High strength T.6 minimum tensile 254 mpa.
- **Pin Dia:** 6mm 304 Stainless Steel with machined chamfer both ends.
- **Bushes:** Flanged nylon.
- **Knuckle:** Squareline - Heavy Duty
- **Aluminium Endcaps:** Pressed-in interference fit.

INSTALLATION GUIDE ONLY

- **Door thickness:** Minimum 40mm
- **When using a door closer, we recommend a minimum of 3 hinges be used, with the top hinge located as high as possible.- For excessive usage a fourth hinge may be required.**
- **Standard Door:** 2040 (H) x 820 (W)
- **Locator allows for fast fixing.**
- **Maximum Weight Capacity:** 60 kg - 3 hinges

FIXING

- Fasteners Screws supplied.
- Pop rivets are not recommended.

FINISH

- SNA - Satin Natural Anodised
- Black - Black Powder Coat
- White - White Powder Coat

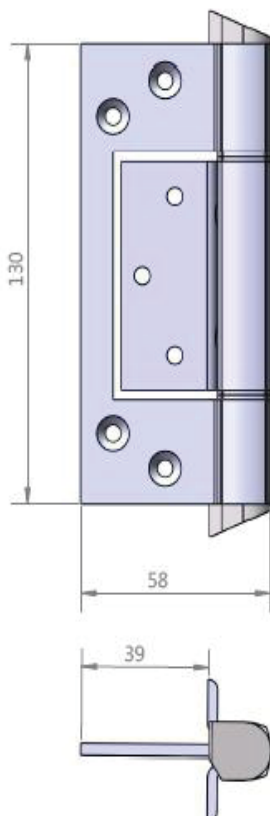
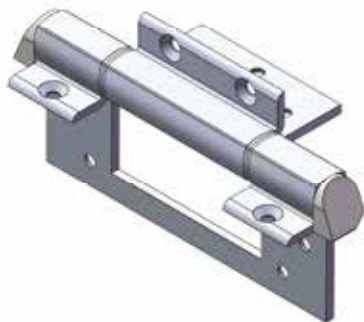
NOTE

- Please be aware this hinge is 4mm thick - please allow for this when calculating your sizes.

Code No.A171

ALUMINUM INTERFOLD ANTI LIGATURE HINGE

Code No. AL104



APPLICATION

- Suitable for aluminium glazed external or internal doors
- Suitable for either centre pocket or front edge glazing systems
- Ideally suited for use internal doors in Care facilities, Hospitals, Public buildings, etc
- Suitable for some timber doors in aluminium frames

SPECIFICATION

- Hinge Type: Aluminium Interleaf Hinge
- Material: High strength Aluminium Alloy T6 minimum tensile 254 mpa
- Hinge Pin: 6mm Diameter 304 grade Stainless Steel
- Bushes: Flanged Nylon
- Knuckle: Squareline - Heavy Duty
- Endcaps: Anti Ligature - Aluminium Pressed Interference fit
- Hinge Positioning Locator: Yes
- Maximum Weight Capacity: 100kg – 3 Hinges

INSTALLATION GUIDE ONLY

Suitable for Aluminium & Timber doors in Aluminium frames
Where door closers are or to be installed and or higher traffic doors an additional hinge may be required

- Door thickness: Minimum 40mm
- Standard Doors: 2040 (H) x 820 (W) - Max Weight 100kg - 3 hinges

FIXING

Fastening screws supplied

Aluminium fixings: 10g x 13mm, SS undercut countersunk self-tapping Phillips drive screw

Pop Rivets are NOT RECOMMENDED

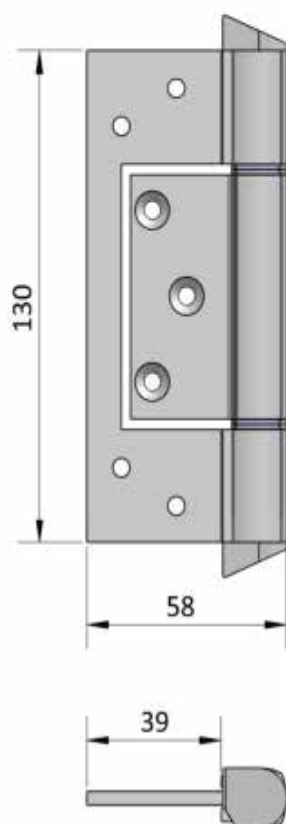
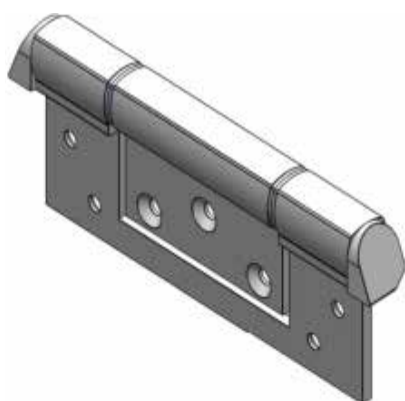
FINISH

- SNA - Satin Natural Anodised
- Black - Black Powder Coat
- White - White Powder Coat

Code No.AL104

ALUMINUM INTERFOLD ANTI LIGATURE HINGE

Code No. AL105



APPLICATION

- Suitable for aluminium glazed external or internal doors
- Suitable for either centre pocket or front edge glazing systems
- Ideally suited for use internal doors in Care facilities, Hospitals, Public buildings, etc
- Suitable for some timber doors in aluminium frames

SPECIFICATION

- Hinge Type: Aluminium Interleaf Hinge
- Material: High strength Aluminium Alloy T6 minimum tensile 254 mpa
- Hinge Pin: 6mm Diameter 304 grade Stainless Steel
- Bushes: Flanged Nylon
- Knuckle: Squareline - Heavy Duty
- Endcaps: Anti Ligature - Aluminium Pressed Interference fit
- Hinge Positioning Locator: Yes
- Maximum Weight Capacity: 80kg – 3 Hinges

INSTALLATION GUIDE ONLY

Suitable for Aluminium & Timber doors in Aluminium frames
Where door closers are or to be installed and or higher traffic doors an additional hinge may be required

- Door thickness: Minimum 38mm
- Standard Doors: 2040 (H) x 820 (W) - Max Weight 80kg - 3 hinges

FIXING

Fastening screws supplied

Aluminium fixings: 10g x 13mm, SS undercut countersunk self-tapping Phillips drive screw

Pop Rivets are NOT RECOMMENDED

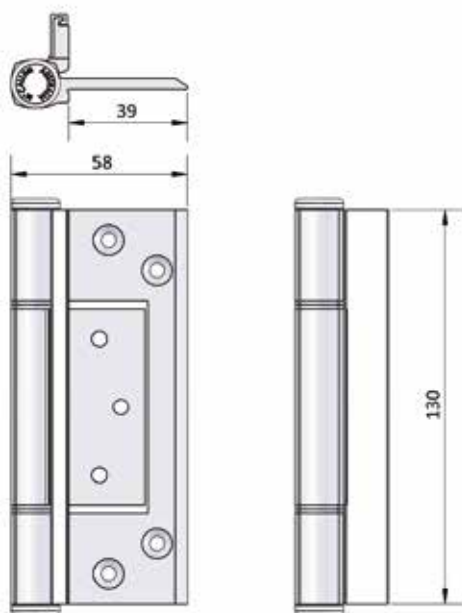
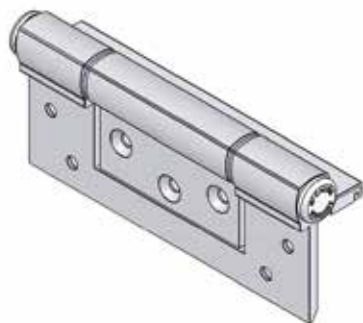
FINISH

- SNA - Satin Natural Anodised
- Black - Black Powder Coat
- White - White Powder Coat

Code No. AL105

ALUMINUM HEAVY DUTY INTERFOLD HINGE

Code No. A13040



APPLICATION

- Cover cap to conceal the frame face fixing screws
- Suitable for aluminium glazed entrance doors
- Suitable for either centre pocket or front edge glazing systems
- Suitable for timber doors in aluminium frames
- Installation to timber doors to timber or metal jambs

SPECIFICATION

- **Hinge Type:** Aluminium Frame Fold Interleaf Hinge
- **Material:** High strength Aluminium Alloy T6 minimum tensile 254 mpa
- **Hinge Pin:** 6mm Diameter 304 grade Stainless Steel
- **Bushes:** Flanged Nylon
- **Knuckle:** Squareline - Heavy Duty
- **Endcaps:** Aluminium Pressed Interference fit
- **Hinge Positioning Locator:** Yes
- **Maximum Weight Capacity:** 100kg – 3 Hinges

INSTALLATION GUIDE ONLY

Suitable for Aluminium & Timber doors in Aluminium frames
Where door closers are or to be installed and or higher traffic doors an additional hinge may be required

- **Door thickness:** Minimum 35mm
- **Standard Door:** 2040 (H) x 820 (W) - Max Weight 100kg - 3 hinges
- **Tested for doors:** 2400 (H) x 1050 (W) - Max Weight 100kg - 4 hinges

FIXING

Fastening screws supplied

Aluminium fixings: 10G x 13mm, SS undercut countersunk self-tapping Phillips drive screw

Timber fixings: 10G x 50mm SS type AB self-tapping Phillips drive screw

Pop Rivets are NOT RECOMMENDED

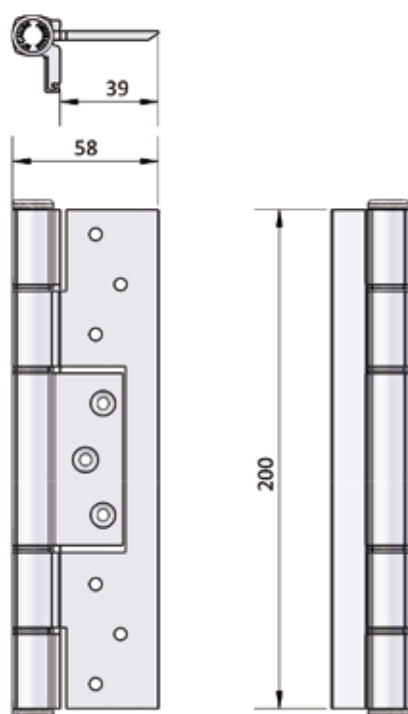
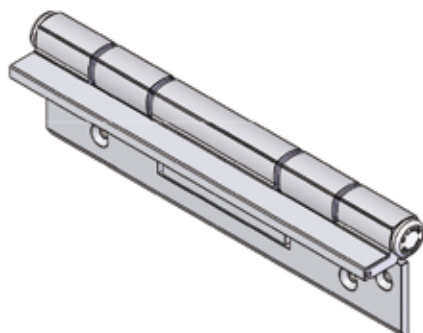
FINISH

- SNA - Satin Natural Anodised.
- Black - Black Powder Coat
- White - White Powder Coat

Code No.A13040

ALUMINUM HEAVY DUTY INTERFOLD HINGE

Code No. A20040



APPLICATION

- Cover cap to conceal the frame face fixing screws
- Suitable for aluminium glazed entrance doors
- Suitable for either centre pocket or front edge glazing systems
- Suitable for timber doors in aluminium frames
- Installation to timber doors to timber or metal jambs

SPECIFICATION

- **Hinge Type:** Aluminium Frame Fold Interleaf Hinge
- **Material:** High strength Aluminium Alloy T6 minimum tensile 254 mpa
- **Hinge Pin:** 6mm Diameter 304 grade Stainless Steel
- **Bushes:** Flanged Nylon
- **Knuckle:** Squareline - Heavy Duty
- **Endcaps:** Aluminium Pressed Interference fit
- **Hinge Positioning Locator:** Yes
- **Maximum Weight Capacity:** 130kg – 3 Hinges

INSTALLATION GUIDE ONLY

Suitable for Aluminium & Timber doors in Aluminium frames
Where door closers are or to be installed and or higher traffic doors an additional hinge may be required

- **Door thickness:** Minimum 40mm
- **Standard Door:** 2040 (H) x 820 (W) - Max Weight 130kg - 3 hinges
- **Tested for doors:** 2700 (H) x 1050 (W) - Max Weight 130kg - 4 hinges

FIXING

Fastening screws supplied

Aluminium fixings: 10G x 13mm, SS undercut countersunk self-tapping Phillips drive screw

Timber fixings: 10G x 50mm SS type AB self-tapping Phillips drive screw

Pop Rivets are NOT RECOMMENDED

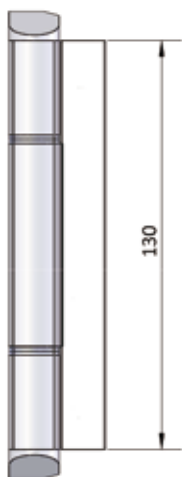
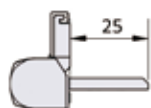
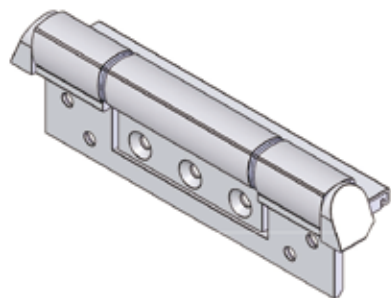
FINISH

- SNA - Satin Natural Anodised.
- Black - Black Powder Coat
- White - White Powder Coat

Code No.A20040

ALUMINUM ANTI LIGATURE INTERFOLD HINGE

Code No. AL13025mm



APPLICATION

- Cover cap to conceal the frame face fixing screws
- Suitable for aluminium doors in aluminium frames
- Suitable for Jockey sash and other window applications
- Suitable for some timber doors in aluminium frames

SPECIFICATION

- **Hinge Type:** Aluminium Frame Fold Interleaf Hinge
- **Material:** High strength Aluminium Alloy T6 minimum tensile 254 mpa
- **Hinge Pin:** 6mm Diameter 304 grade Stainless Steel
- **Bushes:** Flanged Nylon
- **Knuckle:** Squareline - Heavy Duty
- **Endcaps:** Aluminium Pressed Interference fit
- **Hinge Positioning Locator:** Yes
- **Maximum Weight Capacity:** 45kg – 3 Hinges

INSTALLATION GUIDE ONLY

Suitable for Aluminium doors & windows in Aluminium frames Where door

- **Door / Window sash thickness:** Minimum 25mm
- **Standard Doors:** 2040 (H) x 820 (W) - Max Weight 45kg - 3 hinges

FIXING

Fastening screws supplied

Aluminium fixings: 10G x 13mm, SS undercut countersunk self-tapping Phillips drive screw

Timber fixings: 10G x 50mm SS type AB self-tapping Phillips drive screw

Pop Rivets are NOT RECOMMENDED

FINISH

- SNA - Satin Natural Anodised.
- Black - Black Powder Coat
- White - White Powder Coat

Code No.AL13025mm