



sales@mccallumhinges.com.au

www.mccallumhinges.com.au



Quality Hinges Since 1939

About McCallum Australia

McCallum Australia has been manufacturing high quality hardware products for the Australian market since 1939.

Our products are designed and developed in Australia, made from the highest quality materials and processes to exceed the high demands of Australian Standards and the market.

McCallum Australia is the pre-eminent hinge manufacturer for Australia. Our products have been used in hundreds of thousands of projects across Australia – including some of the most prominent such as, The Sydney Opera House, New Parliament House Canberra, and Crown Casino.

McCallum's pioneered the extruded aluminium hinge that features aluminium pressed endcaps, keyed flanged nylon bearings and stainless-steel hinge pins. We have included these innovative design features in our popular heavy duty fast-fix hinge range.

Our range of products are used extensively throughout the Australian market and are sort after by tradespeople, specifiers and technicians for new projects, repairs, refurbishments, and retrofits.

McCallum Australia products are sought for their key attributes:

- Quality
- Reliability
- Technical innovation
- Value

We support this with a focus on strong customer support.

McCallum representatives and stockists would be pleased to discuss and offer advice regarding your hardware requirements.

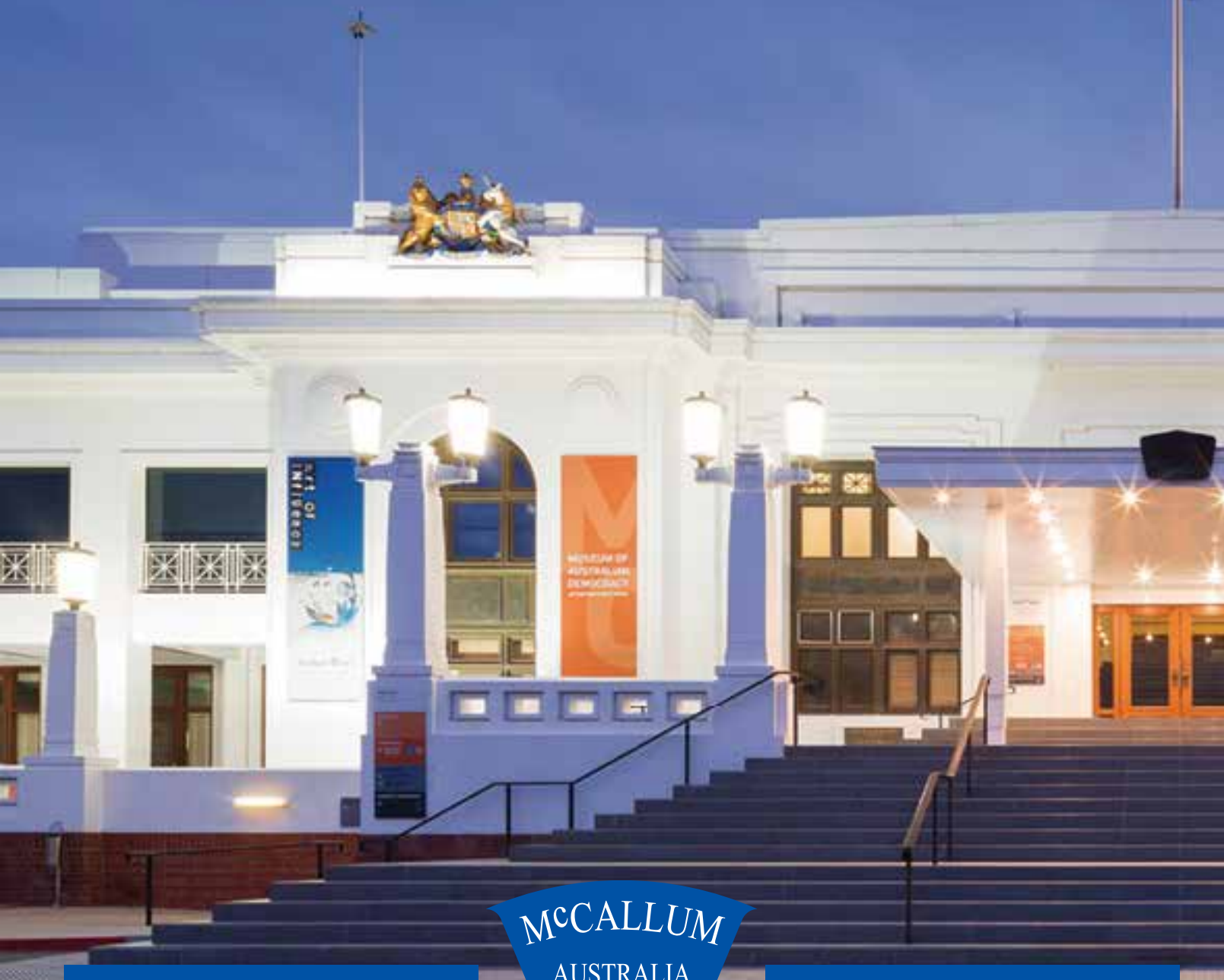
For additional technical information please contact us

+61 2 9698 5111

sales@mccallumhinges.com.au



STAINLESS STEEL HINGES



MCCALLUM
AUSTRALIA

Quality Hinges Since 1939

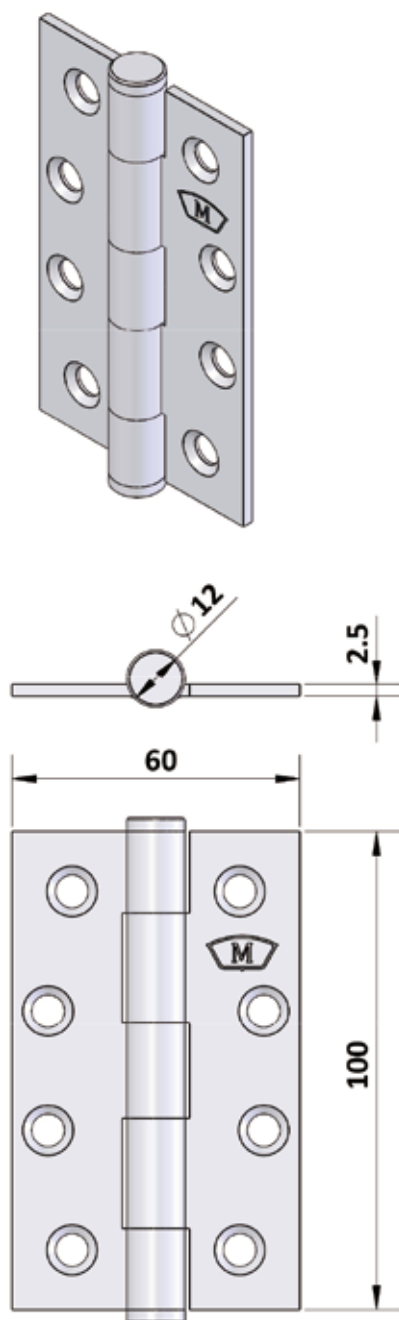
March 2022

CONTENTS

S210SSS	P43
S211SS	P44
S220SS	P45
S221SSS	P46
S252SS	P47
S224SSS	P48
S230SSS	P49
S231SSS	P50
S255SS	P51
S234SSS	P52
S254SS	P53
S240	P54
S241	P55
S260	P56
S261	P57
S264	P58
S263	P59
S201	P60
S202	P61
S203	P62
S271	P63
S275	P64
S278	P65
S279	P66
S265	P67
S266	P68
S267	P69
S268	P70
S289/S290/S292/293	P71
S301/S302/S303/S304/S305	P72
S263AL	P73
S224AL	P74
S234AL	P75

STAINLESS STEEL BUTT HINGE

Code No. S210SSS



APPLICATION

- Suitable for aluminium and timber doors with aluminium, steel and timber frames.

SPECIFICATION

- **Material:** Stainless Steel **304** Grade.
- **Pin Dia:** 6.9mm - Stainless Steel **304** Grade.
- **Knuckle:** Round
- **Endcaps:** Pressed-in interference fit. Stainless Steel **304** Grade.
- Stamped with McCallum crest.
- Fixed Pin.

INSTALLATION GUIDE ONLY

- **Door thickness:** Minimum 30mm.
- When using a door closer, we recommend a minimum of 4 hinges be used, with the top hinge located as high as possible.
- Standard Door: 2040 (H) x 820 (W) - 3 hinges.
- Maximum Weight Capacity: 30kg - 3 hinges

FIXING

- 32mm x 10g stainless steel fasteners for timber (supplied).
- 12mm x M5 stainless steel metal fasteners (supplied).
- Pop rivets are not recommended.
- Not recommended for Bi-Fold door systems.

FINISH

- Satin finish.

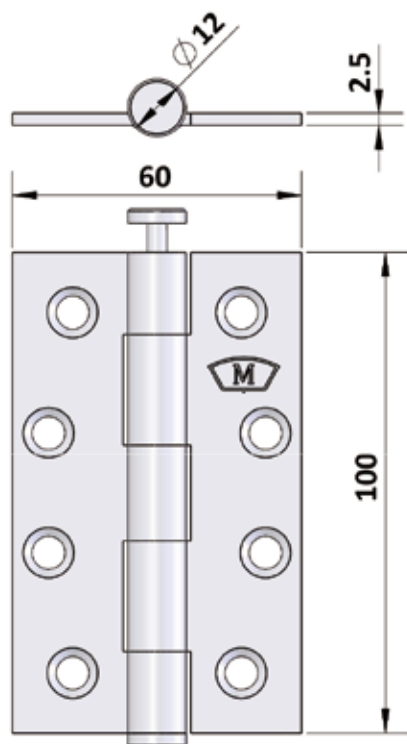
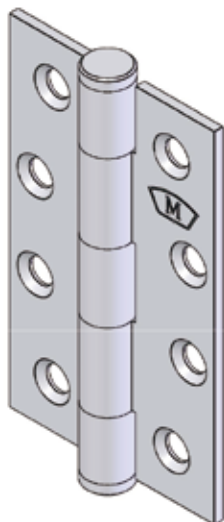
OLD CODE NO.

- S10060 SFP

Code No. S210SSS

STAINLESS STEEL BUTT HINGE

Code No. S211SS



APPLICATION

- Suitable for aluminium and timber doors with aluminium, steel and timber frames.

SPECIFICATION

- **Material:** Stainless Steel **304** Grade.
- **Pin:** 6.9mm - Stainless Steel **304** Grade Punch-Out Pin.
- **Knuckle:** Round
- **Endcaps:** Pressed-in interference fit. Stainless Steel **304** Grade.
- Stamped with M^CCallum crest.
- Loose Pin.

INSTALLATION GUIDE ONLY

- **Door thickness:** Minimum 30mm.
- When using a door closer, we recommend a minimum of 4 hinges be used, with the top hinge located as high as possible.
- Standard Door: 2040 (H) x 820 (W) - 3 hinges.
- Maximum Weight Capacity: 30kg - 3 hinges

FIXING

- 32mm x 10g stainless steel fasteners for timber (supplied).
- 12mm x M5 stainless steel metal fasteners (supplied).
- Pop rivets are not recommended.
- Not recommended for Bi-Fold door systems.

FINISH

- Satin finish.

OLD CODE NO.

- S10060 SLP

Code No. S211SS

STAINLESS STEEL BUTT HINGE

Code No. S220SSS

APPLICATION

- Suitable for aluminium and timber doors with aluminium, steel and timber frames.

SPECIFICATION

- **Material:** Stainless Steel **304** Grade.
- **Pin Dia:** 6.9mm - Stainless Steel **304** Grade.
- **Knuckle:** Round
- **Endcaps:** Pressed-in interference fit. Stainless Steel **304** Grade.
- Stamped with M^CCallum crest.
- Fixed Pin.

INSTALLATION GUIDE ONLY

- **Door thickness: Minimum 35mm.**
- When using a door closer, we recommend a minimum of 4 hinges be used, with the top hinge located as high as possible.
- Standard Door: 2040 (H) x 820 (W) - 3 hinges.
- Maximum Weight Capacity: 60kg - 3 hinges

FIXING

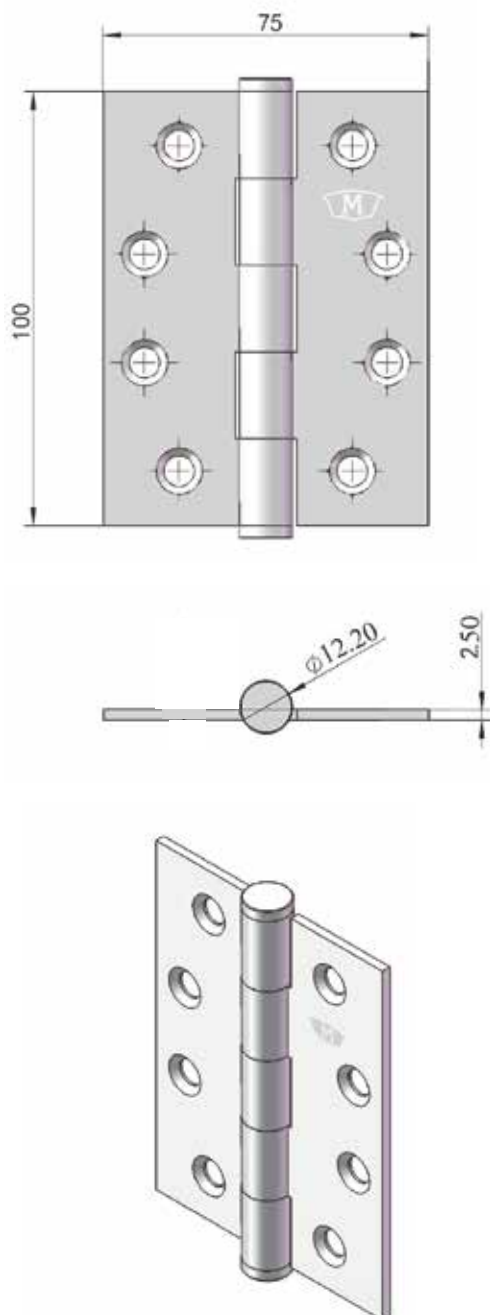
- 32mm x 10g stainless steel fasteners for timber (supplied).
- 12mm x M5 stainless steel metal fasteners (supplied).
- Pop rivets are not recommended.
- Not recommended for Bi-Fold door systems.

FINISH

- S220SSS Satin
- S220PSS Polished
- S220BLK ECO Black
- S220PVD PVD

OLD CODE NO.

- S10075 SFP



Code No. S220SSS

STAINLESS STEEL BUTT HINGE

Code No. S221SSS

APPLICATION

- Suitable for aluminium and timber doors with aluminium, steel and timber frames.

SPECIFICATION

- **Material:** Stainless Steel **304** Grade.
- **Pin:** 6.9mm - Stainless Steel **304** Grade Punch-Out Pin.
- **Knuckle:** Round
- **Endcaps:** Pressed-in interference fit. Stainless Steel **304** Grade.
- Stamped with M^CCallum crest.
- Loose Pin.

INSTALLATION GUIDE ONLY

- **Door thickness:** Minimum 35mm.
- When using a door closer, we recommend a minimum of 4 hinges be used, with the top hinge located as high as possible.
- Standard Door: 2040 (H) x 820 (W) - 3 hinges.
- Maximum Weight Capacity: 60kg - 3 hinges

FIXING

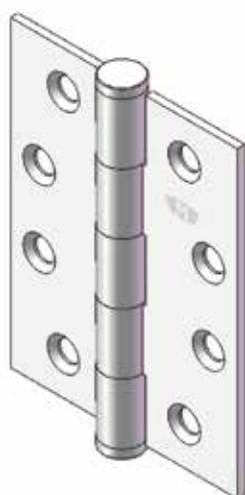
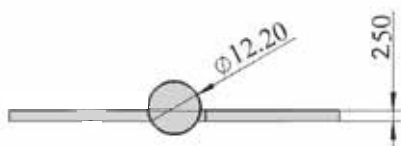
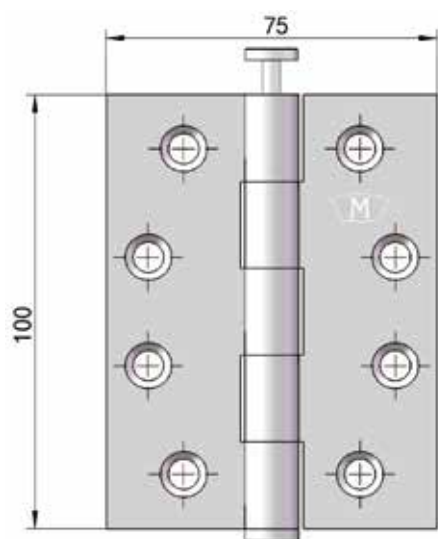
- 32mm x 10g stainless steel fasteners for timber (supplied).
- 12mm x M5 stainless steel metal fasteners (supplied).
- Pop rivets are not recommended.
- Not recommended for Bi-Fold door systems.

FINISH

- S221SSS Satin
- S221PSS Polished
- S221BLK ECO Black
- S221PVD PVD

OLD CODE NO.

- S10075 SLP



Code No. S221SSS

STAINLESS STEEL BUTT HINGE

Code No. S252SS

APPLICATION

- Suitable for aluminium & timber doors with aluminium, steel and timber frames.

SPECIFICATION

- Material: Stainless Steel 316 Grade.
- Pin Dia: 6.9mm - Stainless Steel 316 Grade.
- Knuckle: Round
- Endcaps: Pressed-in interference fit. Stainless Steel 316 Grade.
- Stamped with MCCallum crest.
- Fixed Pin.

INSTALLATION GUIDE ONLY

- Door thickness: Minimum 35mm.
- When using a door closer, we recommend a minimum of 4 hinges be used, with the top hinge located as high as possible.
- Standard Door: 2040 (H) x 820 (W) - 3 hinges.
- Maximum Weight Capacity: 60kg - 3 hinges

FIXING

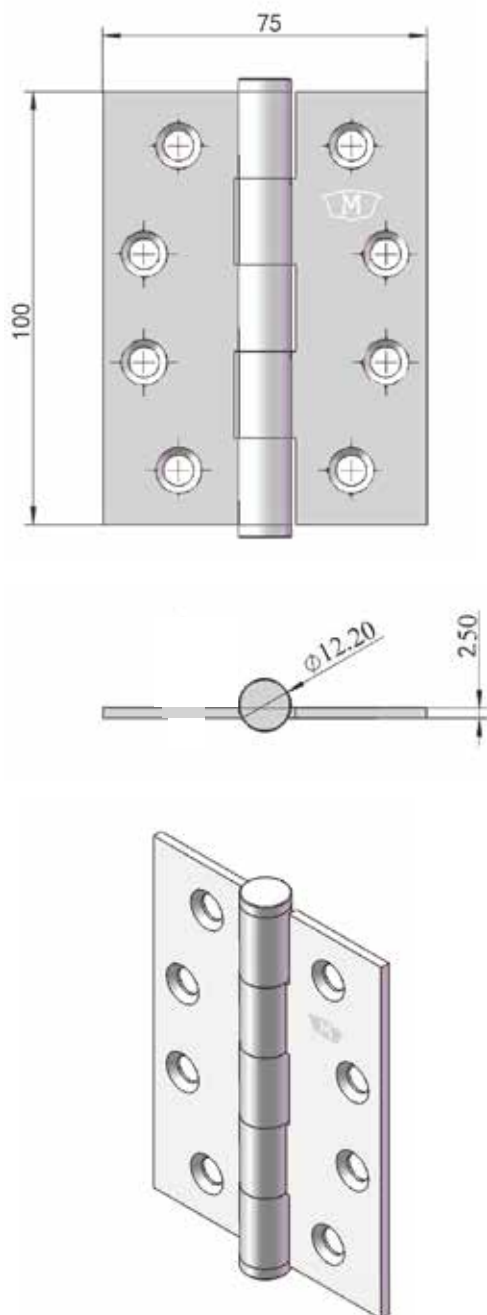
- 32mm x 10g stainless steel fasteners for timber (supplied).
- 12mm x M5 stainless steel metal fasteners (supplied).
- Pop rivets are not recommended.
- Not recommended for Bi-Fold door systems.

FINISH

- S252SSS Satin
- S252PSS Polished

OLD CODE NO.

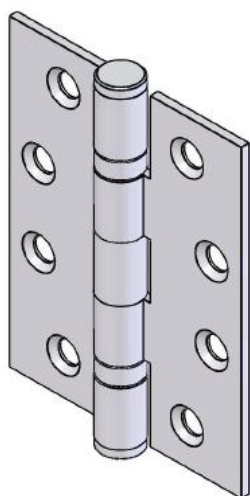
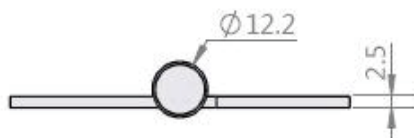
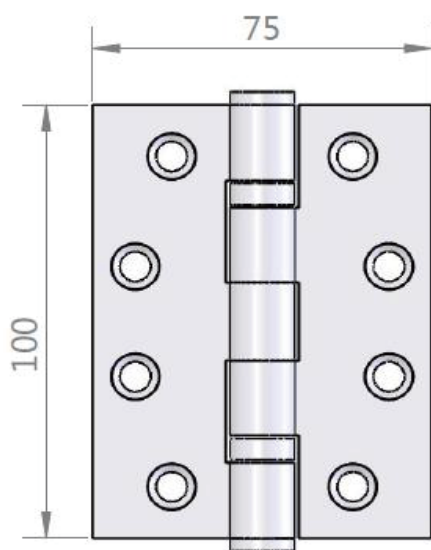
- S10075 PFP



Code No. S252SS

STAINLESS STEEL BUTT HINGE

Code No. S224SSS



APPLICATION

- Suitable for aluminium & timber doors with aluminium, steel and timber frames.

SPECIFICATION

- Material: Stainless Steel 304 Grade.
- Pin: 6.9mm - Stainless Steel 304 Grade.
- Knuckle: Round
- Endcaps: Pressed-in interference fit. Stainless Steel 304 Grade.
- Stamped with McCallum crest.
- Fixed Pin.
- Bearings: 2 Stainless Steel Off - Cage & Ball Bearings.

INSTALLATION GUIDE ONLY

- Door thickness: Minimum 35mm
- When using a door closer, we recommend a minimum of 4 hinges be used, with the top hinge located as high as possible.
- Standard Door: 2040 (H) x 820 (W) - 3 hinges.
- Maximum Weight Capacity: 60kg - 3 hinges

FIXING

- 32mm x 10g stainless steel fasteners for timber (supplied).
- 12mm x M5 stainless steel metal fasteners (supplied).
- Pop rivets are not recommended.
- Not recommended for Bi-Fold door systems.

FINISH

- S224SSS Satin
- S224SSS Polished
- S224BLK ECO Black
- S224PVD PVD

OLD CODE NO.

- SB10075SFP (2.5mm)

SPECIAL NOTE

- The S224SSS meets the UK and the Council of European Communities standard for Pedestrian access doors, including fire and smoke door
The EC certificate of Conformity is 359-CPD-0043/EN
1935:2002/AC:2003

Code No. S224SSS

STAINLESS STEEL BUTT HINGE

Code No. S230SSS

APPLICATION

- Suitable for aluminium and timber doors with aluminium, steel and timber frames.

SPECIFICATION

- **Material:** Stainless Steel **304** Grade.
- **Pin Dia:** 6.9mm - Stainless Steel **304** Grade.
- **Knuckle:** Round
- **Endcaps:** Pressed-in interference fit. Stainless Steel **304** Grade.
- Stamped with M^cCallum crest.
- Fixed Pin.

INSTALLATION GUIDE ONLY

- **Door thickness: Minimum 35mm.**
- When using a door closer, we recommend a minimum of 4 hinges be used, with the top hinge located as high as possible.
- Standard Door: 2040 (H) x 820 (W) - 3 hinges.
- Maximum Weight Capacity: 60kg - 3 hinges

FIXING

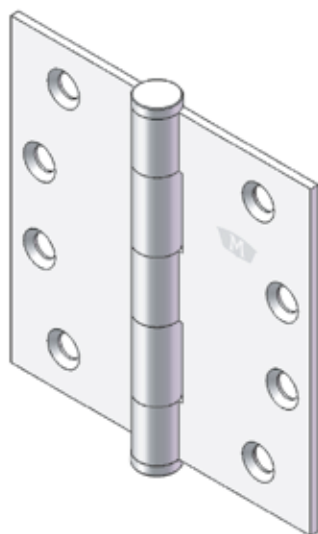
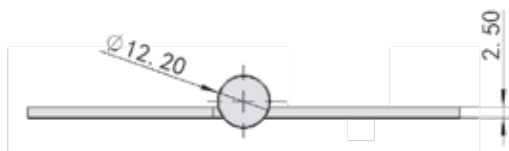
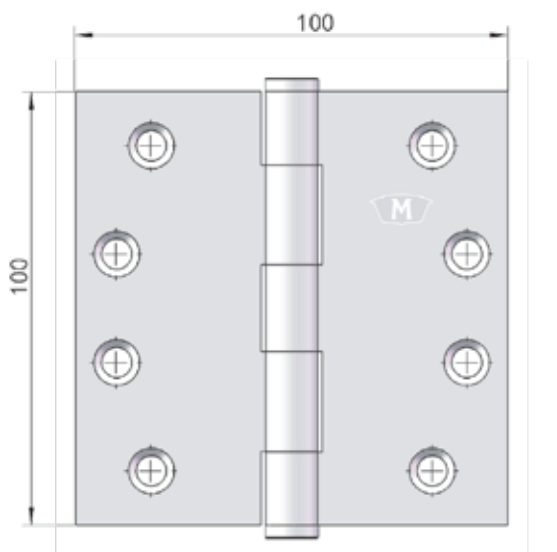
- 32mm x 10g stainless steel fasteners for timber (supplied).
- 12mm x M5 stainless steel metal fasteners (supplied).
- Pop rivets are not recommended.
- Not recommended for Bi-Fold door systems.

FINISH

- S230SSS Satin
- S230PSS Polished
- S230BLK ECO Black
- S230PVD PVD

OLD CODE NO.

- S100100 SFP



Code No. S230SSS

STAINLESS STEEL BUTT HINGE

Code No. S231SSS

APPLICATION

- Suitable for aluminium and timber doors with aluminium, steel and timber frames.

SPECIFICATION

- **Material:** Stainless Steel **304** Grade.
- **Pin:** 6.9mm - Stainless Steel **304** Grade Punch-Out Pin.
- **Knuckle:** Round
- **Endcaps:** Pressed-in interference fit. Stainless Steel **304** Grade.
- Stamped with McCallum crest.
- Loose Pin.

INSTALLATION GUIDE ONLY

- **Door thickness:** Minimum 35mm.
- When using a door closer, we recommend a minimum of 4 hinges be used, with the top hinge located as high as possible.
- Standard Door: 2040 (H) x 820 (W) - 3 hinges.
- Maximum Weight Capacity: 60kg - 3 hinges

FIXING

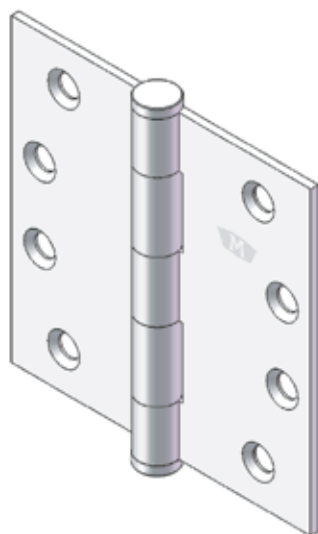
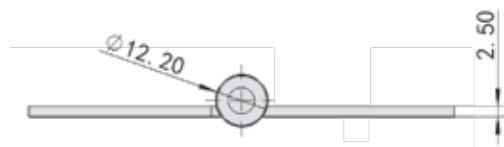
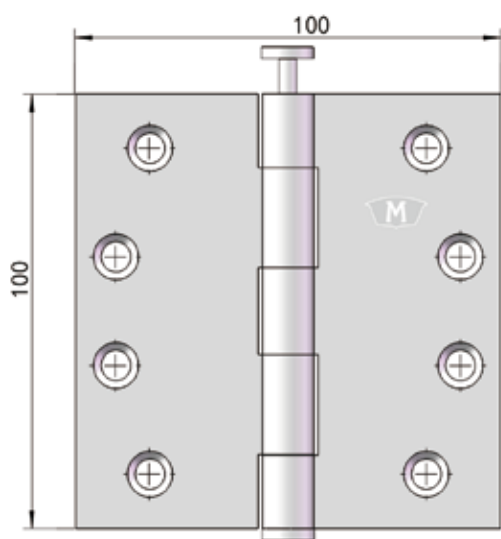
- 32mm x 10g stainless steel fasteners for timber (supplied).
- 12mm x M5 stainless steel metal fasteners (supplied).
- Pop rivets are not recommended.
- Not recommended for Bi-Fold door systems.

FINISH

- S231SSS Satin
- S231PSS Polished
- S231BLK ECO Black
- S231PVD PVD

OLD CODE NO.

- S100100 SLP



Code No. S231SSS

STAINLESS STEEL BUTT HINGE

Code No. S255SS

APPLICATION

- Suitable for aluminium & timber doors with aluminium, steel and timber frames.

SPECIFICATION

- Material : Stainless Steel 316 Grade.
- Pin : 6.9mm - Stainless Steel 316 Grade.
- Knuckle: Round
- Endcaps: Pressed-in interference fit. Stainless Steel 316 Grade.
- Stamped with McCallum crest.
- Fixed Pin.

INSTALLATION GUIDE ONLY

- Door thickness: Minimum 35mm
- When using a door closer, we recommend a minimum of 4 hinges be used, with the top hinge located as high as possible.
- Standard Door: 2040 (H) x 820 (W) - 3 hinges.
- Maximum Weight Capacity: 60kg - 3 hinges

FIXING

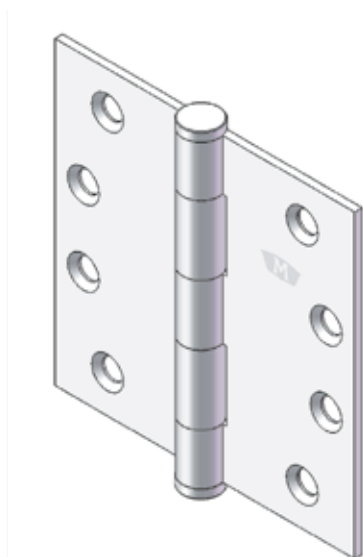
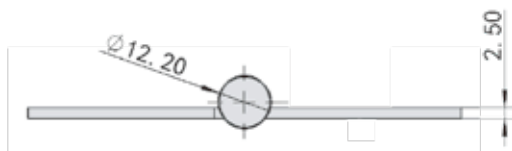
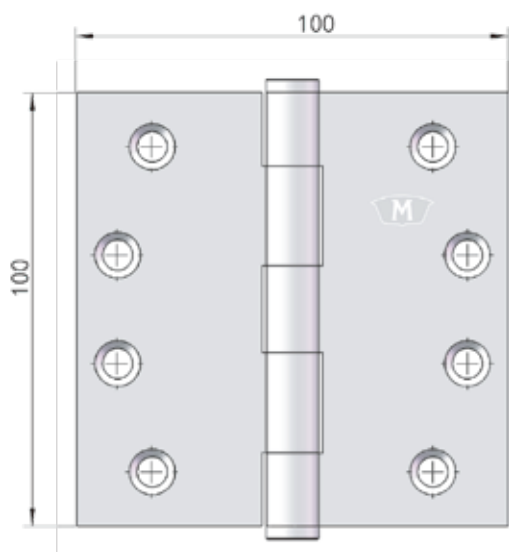
- 32mm x 10g stainless steel fasteners for timber (supplied).
- 12mm x M5 stainless steel metal fasteners (supplied).
- Pop rivets are not recommended.
- Not recommended for Bi-Fold door systems.

FINISH

- Polished Stainless Steel.

OLD CODE NO.

- SB100100 PFP



Code No. S255SS

STAINLESS STEEL BUTT HINGE

Code No. S234SSS

APPLICATION

- Suitable for aluminium and timber doors with aluminium, steel and timber frames.

SPECIFICATION

- **Material:** Stainless Steel **304** Grade.
- **Pin Dia:** 6.9mm - Stainless Steel **304** Grade.
- **Knuckle:** Round
- **Endcaps:** Pressed-in interference fit. Stainless Steel **304** Grade.
- Stamped with McCallum crest.
- Fixed Pin.
- **Bearings:** 2 Stainless Steel Off-Cage Ball Bearings.

INSTALLATION GUIDE ONLY

- **Door thickness:** Minimum **35mm**.
- When using a door closer, we recommend a minimum of 4 hinges be used, with the top hinge located as high as possible.
- Standard Door: 2040 (H) x 820 (W) - 3 hinges.
- Maximum Weight Capacity: 60kg - 3 hinges

FIXING

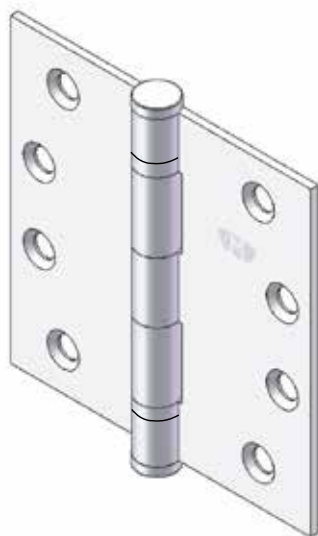
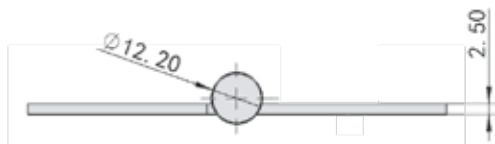
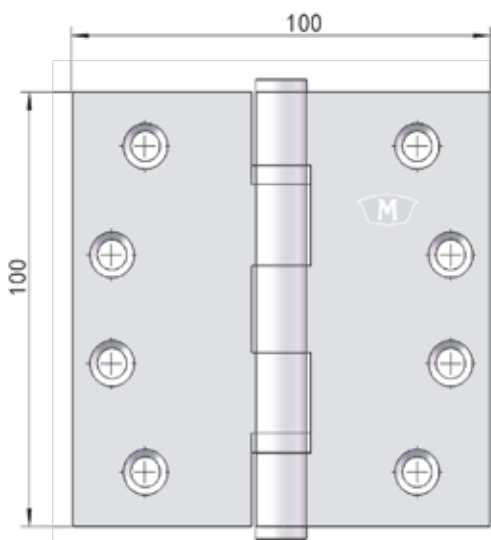
- 32mm x 10g stainless steel fasteners for timber (supplied).
- 12mm x M5 stainless steel metal fasteners (supplied).
- Pop rivets are not recommended.
- Not recommended for Bi-Fold door systems.

FINISH

- S234SSS Satin
- S234PSS Polished
- S234BLK ECO Black
- S234PVD PVD

OLD CODE NO.

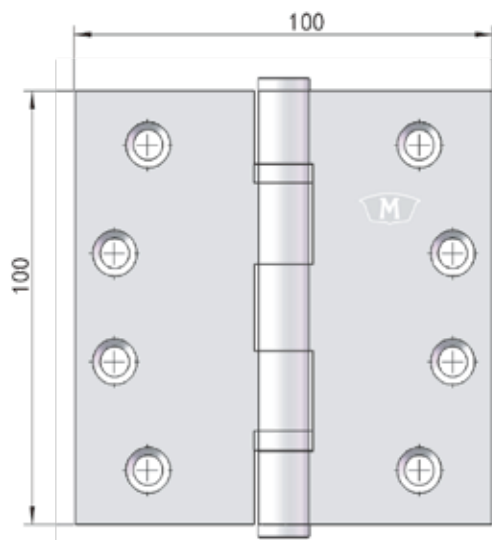
- SB100100 SFP



Code No. S234SSS

STAINLESS STEEL BUTT HINGE

Code No. S254SS



APPLICATION

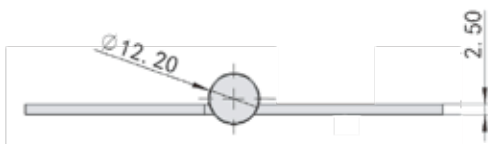
- Suitable for aluminium & timber doors with aluminium, steel and timber frames.

SPECIFICATION

- Material: Stainless Steel 316 Grade.
- Pin: 6.9mm - Stainless Steel 316 Grade Punch-Out Pin.
- Knuckle: Round
- Endcaps: Pressed-in interference fit. Stainless Steel 316 Grade.
- Stamped with McCallum crest.
- Fixed Pin.
- Bearings: 2 Stainless Steel Off-Cage Ball Bearings.

INSTALLATION GUIDE ONLY

- Door thickness: Minimum 35mm
- When using a door closer, we recommend a minimum of 4 hinges be used, with the top hinge located as high as possible.
- Standard Door: 2040 (H) x 820 (W) - 3 hinges.
- Maximum Weight Capacity: 60kg - 3 hinges



FIXING

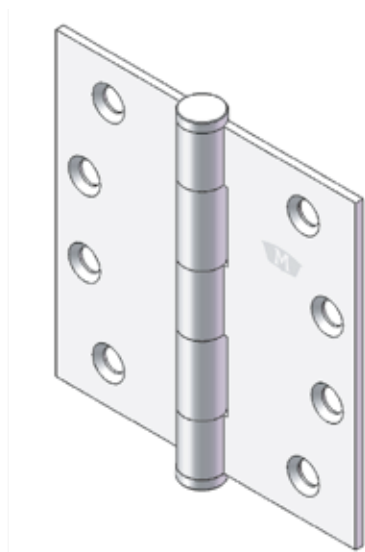
- 32mm x 10g stainless steel fasteners for timber (supplied).
- 12mm x M5 stainless steel metal fasteners (supplied).
- Pop rivets are not recommended.
- Not recommended for Bi-Fold door systems.

FINISH

- S254SS Satin.

OLD CODE NO.

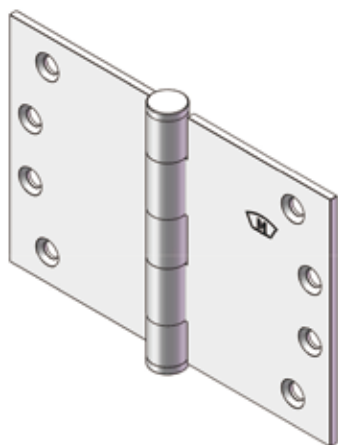
- SB100100 PFP



Code No. S254SS

STAINLESS STEEL BUTT HINGE

Code No. S 240



APPLICATION

- Suitable for aluminium and timber doors with aluminium, steel and timber frames.

SPECIFICATION

- Material: Stainless Steel 304 Grade.
- Pin Dia: 6.9mm - Stainless Steel 304 Grade.
- Knuckle: Round
- Endcaps: Pressed-in interference fit. Stainless Steel 304 Grade.
- Stamped with M^cCallum crest.
- Fixed Pin.
- Bearings: 2 Stainless Steel Off-Cage Ball Bearings.

INSTALLATION GUIDE ONLY

- Door thickness: Minimum 35mm.
- When using a door closer, we recommend a minimum of 4 hinges be used, with the top hinge located as high as possible.
- Standard Door: 2040 (H) x 820 (W) - 3 hinges.
- Maximum Weight Capacity: 80kg - 3 hinges

FIXING

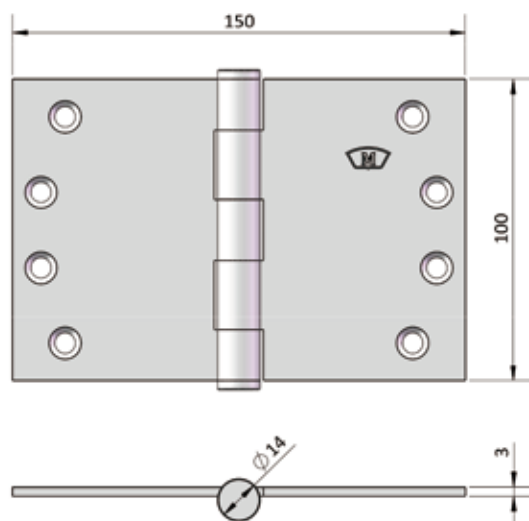
- Fastening screws supplied.
- Pop rivets are not recommended.

FINISH

- Satin finish.

OLD CODE NO.

- S100150SFP



Code No. S 240

STAINLESS STEEL BUTT HINGE

Code No. S 241

APPLICATION

- Suitable for aluminium and timber doors with aluminium, steel and timber frames.

SPECIFICATION

- Material: Stainless Steel 304 Grade.
- Pin Dia: 6.9mm - Stainless Steel 304 Grade.
- Knuckle: Round
- Endcaps: Pressed-in interference fit. Stainless Steel 304 Grade.
- Stamped with M^cCallum crest.
- Fixed Pin.
- Bearings: 2 Stainless Steel Off-Cage Ball Bearings.

INSTALLATION GUIDE ONLY

- Door thickness: Minimum 35mm.
- When using a door closer, we recommend a minimum of 4 hinges be used, with the top hinge located as high as possible.
- Standard Door: 2040 (H) x 820 (W)- 3 hinges.
- Maximum Weight Capacity: 80kg - 3 hinges

FIXING

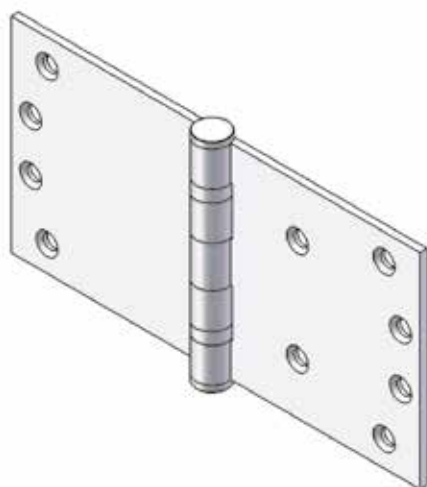
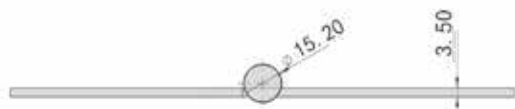
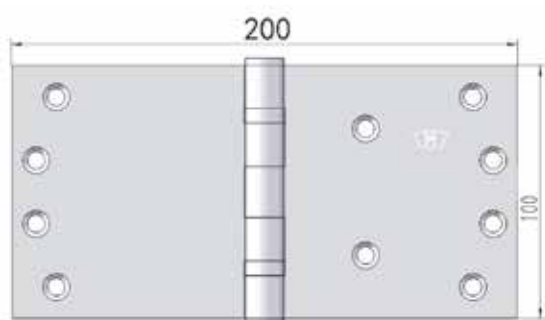
- Fastening screws supplied.
- Two extra fastening holes to allow more support from jamb material.
- Pop rivets are not recommended.

FINISH

- Satin finish.

OLD CODE NO.

- S100200SFP



Code No. S 241

STAINLESS STEEL INTERFOLD HINGE

Code No. S 260

APPLICATION

- Suitable for aluminium and timber doors in medium usage situations.
- Offset Knuckle

SPECIFICATION

- **Material:** Stainless Steel **304** Grade
- **Bearings:** 2 Stainless Steel Off-Cage Ball Bearings.
- **Pin Dia:** 6.9mm - Stainless Steel **304** Grade.
- **Knuckle:** Round.
- **Endcaps:** Dome, Pressed-in interference knurled fit. Stainless Steel **304** Grades Steel.

INSTALLATION GUIDE ONLY

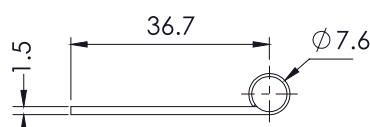
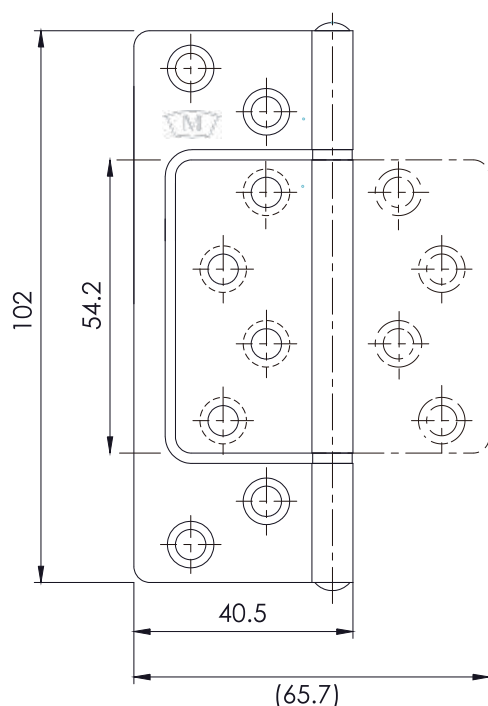
- **Door thickness: Minimum 35mm.**
- When using a door closer, we recommend a minimum of 3 hinges be used, with the top hinge located as high as possible. For excessive usage a fourth hinge may be required.
- Standard Door: 2040 (H) x 820 (W) - 3 hinges
- Maximum Weight Capacity: 20kg - 3 hinges

FIXING

- **Fastening screws supplied.**
- Pop rivets are not recommended.

FINISH

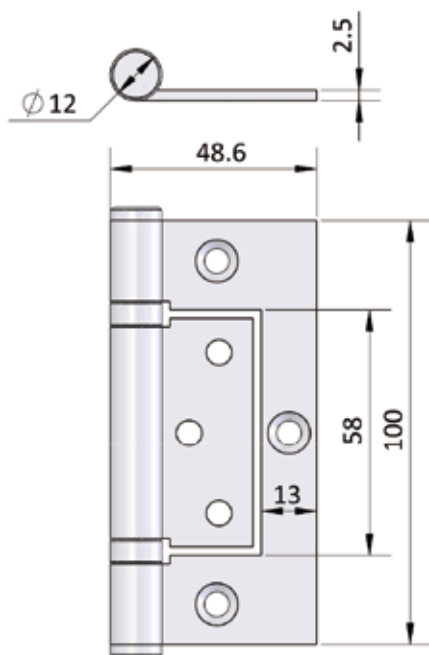
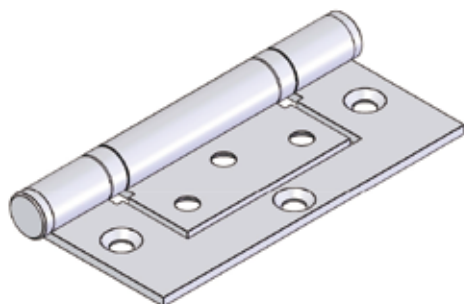
- Satin finish Stainless Steel.



Code No. S 260

STAINLESS STEEL BUTT HINGE

Code No. S261



APPLICATION

- Suitable for aluminium glazed external or internal doors
- Suitable for either centre pocket or front edge glazing systems
- Suitable for some timber doors in aluminium frames
- Offset Knuckle

SPECIFICATION

- Material : Stainless Steel 304 Grade.
- Bearings : 2 Stainless Steel off-Cage Ball Bearings.
- Pin Dia: 6.9mm - 304 grade stainless steel.
- Knuckle: Round
- Endcaps: Pressed-in interference knurled fit. Stainless Steel 304 Grade.

INSTALLATION GUIDE ONLY

- Door thickness: Minimum 35mm
- When using a door closer, we recommend a minimum of 3 hinges be used, with the top hinge located as high as possible. For excessive usage a fourth hinge may be required.
- Standard Door: 2040 (H) x 820 (W) - 3 hinges.
- Maximum Weight Capacity: 25 kg

FIXING

- Fasteners Screws supplied.
- Pop rivets are not recommended.

FINISH

- SSS - Satin Stainless Steel
- BLK - Black

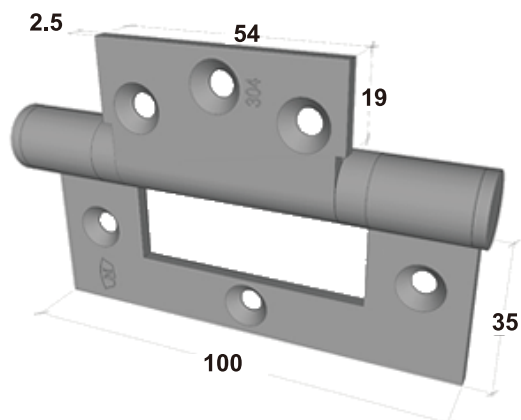
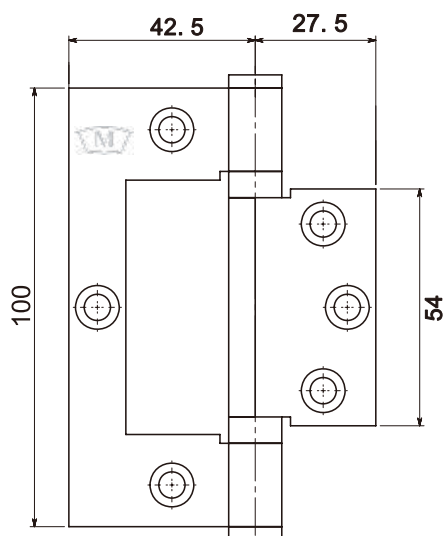
OLD CODE NO.

- S801

Code No.S261

STAINLESS STEEL OFFSET INTERFOLD HINGE

Code No. S 264



APPLICATION

- Suitable for timber doors in medium usage situations.
- **The S264 may be more suitable for timber because the fixing holes on the large leaf are further away from the timber edge.**
- Offset Knuckle

SPECIFICATION

- **Material:** Stainless Steel **304** Grade.
- **Bearings:** 2 Stainless Steel Off-Cage Ball Bearings.
- **Pin Dia:** 6.9mm - Stainless Steel **304** Grade.
- **Knuckle:** Round
- **Endcaps:** Pressed-in interference knurled fit. Stainless Steel **304** Grade.

INSTALLATION GUIDE ONLY

- **Door thickness: Minimum 35mm.**
- When using a door closer, we recommend a minimum of 3 hinges be used, with the top hinge located as high as possible. For excessive usage a fourth hinge may be required.
- Standard Door: 2040 (H) x 820 (W) - 3 hinges
- Maximum Weight Capacity: 25kg - 3 hinges

FIXING

- **Fastening screws supplied.**
- Pop rivets are not recommended.

FINISH

- Satin finish Stainless Steel.
- Black.

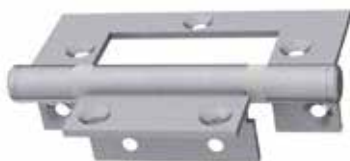
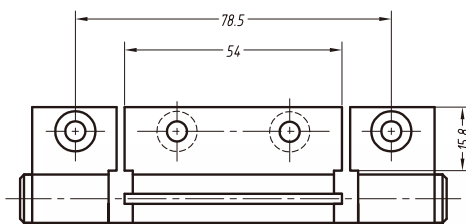
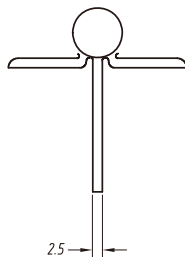
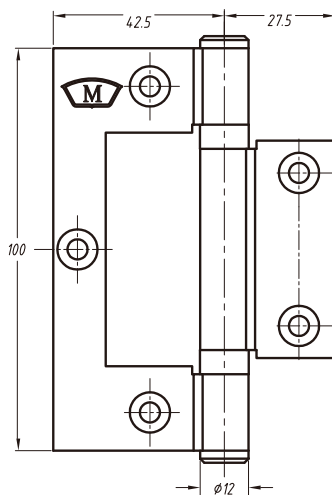
OLD CODE NO.

- S801T

Code No. S 264

STAINLESS STEEL INTERFOLD HINGE

Code No. S 263



APPLICATION

- Suitable for aluminium entrance doors in medium usage situations.
- Suitable for either centre pocket or front edge glazing systems.
- Suitable for some timber door applications.
- Pre-drilling of the holes in the timber may be required.

SPECIFICATION

- **Material:** Stainless Steel **304** Grade.
- **Bearings:** 2 Stainless Steel Off-Cage Ball Bearings.
- **Pin Dia:** 6.9mm - Stainless Steel **304** Grade.
- **Knuckle:** Round
- **Endcaps:** Pressed-in interference knurled fit. Stainless Steel **304** Grade.

INSTALLATION GUIDE ONLY

- **Door thickness: Minimum 35mm.**
- When using a door closer, we recommend a minimum of 3 hinges be used, with the top hinge located as high as possible. For excessive usage a fourth hinge may be required.
- Standard Door: 2040 (H) x 820 (W) - 3 hinges.
- **Special Note: this hinge, which is 2.5mm thick, is suitable for retro fitting where standard fast-fix hinges have failed. The wing fastening prevents the hinge from opening, and allows for a greater door weight.**
- Maximum Weight Capacity: 50kg - 3 hinges

FIXING

- **Fastening screws supplied.**
- Pop rivets are not recommended.

FINISH

- Satin finish.

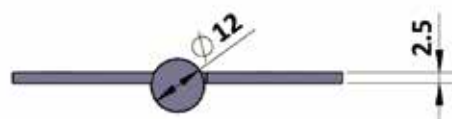
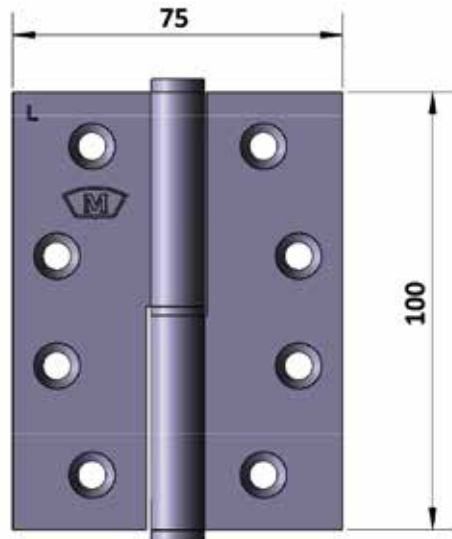
OLD CODE NO.

- S104 S

Code No. S 263

STAINLESS STEEL LIFT - OFF HINGE

Code No. S 201



APPLICATION

- Lift-off facility for aluminium and timber doors.

SPECIFICATION

- **Material:** Stainless Steel **304** Grade.
- **Pin Dia:** 6.9mm - Stainless Steel **304** Grade.
- **Knuckle:** Round - 12mm diameter.
- **Endcaps:** Pressed-in interference knurled fit. Stainless Steel **304** Grade.
- **Pin:** 15mm

INSTALLATION GUIDE ONLY

- **HANDING IS DETERMINED AS BELOW:**
RIGHT HAND is with the door coming toward you, and the hinges are on the right.
LEFT HAND is when the door coming toward you, and the hinges are on the left.
- **Door thickness: Minimum 35mm.**
- For excessive usage a fourth hinge may be required.
- Standard Door: 2040 (H) x 820 (W) - 3 hinges.
- For lift-off clearance, we recommend a 30mm gap, minimum at the top of the door.
- Maximum Weight Capacity: 25kg - 3 hinges

FIXING

- **Fastening screws supplied.**
- Pop rivets are not recommended.

FINISH

- Satin finish.
- Eco Black

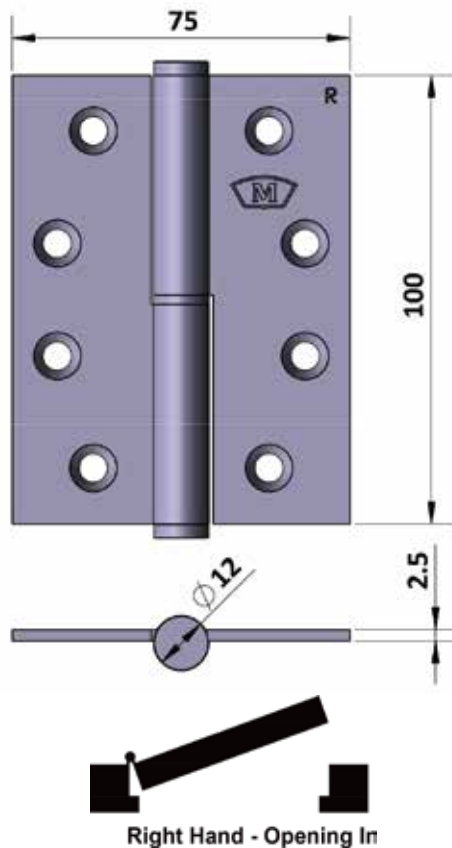
OLD CODE NO.

- S102 LH

Code No. S 201

STAINLESS STEEL LIFT - OFF HINGE

Code No. S 202



APPLICATION

- Lift-off facility for aluminium and timber doors.

SPECIFICATION

- **Material:** Stainless Steel **304** Grade.
- **Pin Dia:** 6.9mm - Stainless Steel **304** Grade.
- **Knuckle:** Round - 12mm diameter.
- **Endcaps:** Pressed-in interference knurled fit. Stainless Steel **304** Grade.
- **Pin:** 15mm

INSTALLATION GUIDE ONLY

- **HANDING IS DETERMINED AS BELOW:**
RIGHT HAND is with the door coming toward you, and the hinges are on the right.
LEFT HAND is when the door coming toward you, and the hinges are on the left.
- **Door thickness: Minimum 35mm.**
- For excessive usage a fourth hinge may be required.
- Standard Door: 2040 (H) x 820 (W) - 3 hinges.
- For lift-off clearance, we recommend a 30mm gap, minimum at the top of the door.
- Maximum Weight Capacity: 25kg - 3 hinges

FIXING

- **Fastening screws supplied.**
- Pop rivets are not recommended.

FINISH

- Satin finish.
- Eco Black

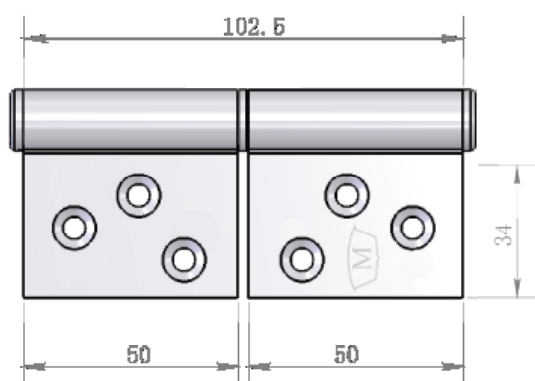
OLD CODE NO.

- S102 RH

Code No. S 202

STAINLESS STEEL LIFT - OFF HINGE

Code No. S 203 Universal Lift Off



APPLICATION

- Lift-off facility for aluminium and timber doors.
- Universal fitting means application for both left and right handed doors.

SPECIFICATION

- **Material:** Stainless Steel **304** Grade.
- **Knuckle:** Round.
- **Pin Diameter:** 6.9mm - Stainless Steel **304** Grade.
- **Endcaps:** Pressed-in interference fit. Stainless Steel **304** Grade.
- **Pin Length:** 15mm

INSTALLATION GUIDE ONLY

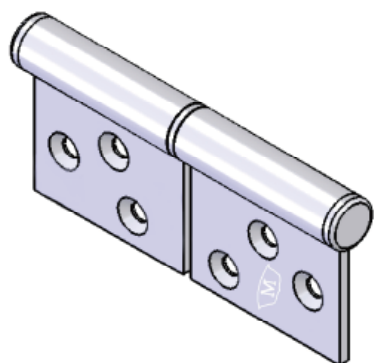
- **These hinges are designed to suit left and right hand installations making it easier for specifying.**
- The leaves are central on the knuckle with double countersinking.
- Two of the screw holes in the leaf align with metal frame pattern. The third hole will require drilling and tapping of the frame.
- 3 x 12mm x M5 metal screws are supplied for the metal frame.
- **Door thickness: Minimum 35mm.**
- For excessive usage, a fourth hinge may be required.
- Standard Door: 2040 (H) x 820 (W) - 3 hinges.
- For lift-off clearance, we recommend a 30mm gap, minimum at the top of the door.
- Maximum Weight Capacity: 25kg - 3 hinges

FIXING

- **Fastening screws supplied.**
- Pop rivets are not recommended.

FINISH

- Satin finish.



Code No. S 203

STAINLESS STEEL BUTT HINGE

Code No. S 271

APPLICATION

- Suitable for aluminium and timber doors with aluminium, steel and timber frames.

SPECIFICATION

- **Material:** Stainless Steel **304** Grade.
- **Bearings:** 2 off-cage ball bearings.
- **Pin Dia:** 6.9mm - 304 Stainless Steel.
- **Knuckle:** Round.
- **Endcaps:** Pressed-in interference fit. Stainless Steel **304** Grade.
- Stamped with McCallum crest.

INSTALLATION GUIDE ONLY

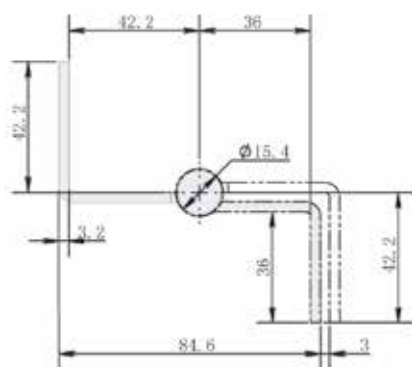
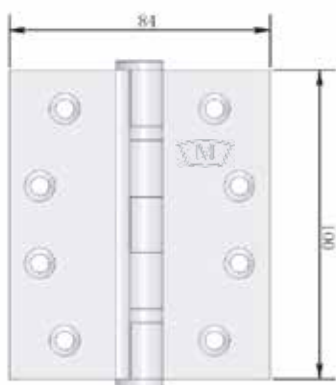
- **Door thickness:** Minimum 32mm.
- When using a door closer, we recommend a minimum of 4 hinges be used, with the top hinge located as high as possible.
- Standard Door: 2040 (H) x 820 (W) - 3 hinges.
- Maximum Weight Capacity: 120kg - 3 hinges

FIXING

- 32mm x 10g stainless steel fasteners for timber (supplied).
- 12mm x M5 stainless steel metal fasteners (supplied).
- Pop rivets are not recommended.
- Not recommended for Bi-Fold door systems.

FINISH

- Satin finish.



Code No. S 271

STAINLESS STEEL SCREEN BUTT HINGE

Code No. S 275

APPLICATION

- Screen doors and screens, small windows, some steel cabinet applications.

SPECIFICATION

- Material:** Stainless Steel **304** Grade.
- Pin Dia:** 4.5mm - Stainless Steel **304** Grade - spin rivet.
- Hole Pattern:** 3 holes in each leaf.
- Offset for screen door application.

INSTALLATION GUIDE ONLY

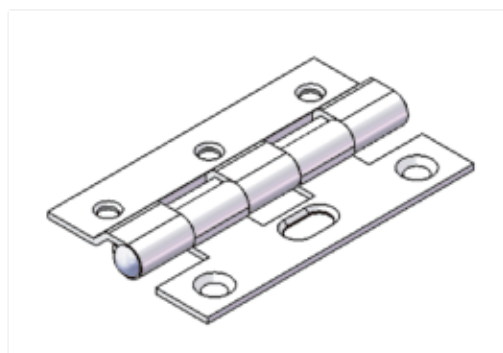
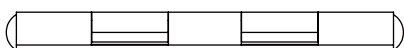
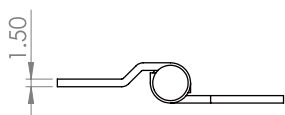
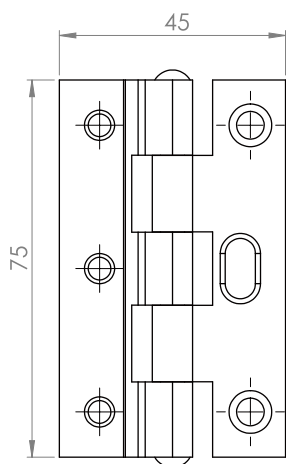
- Maximum Weight Capacity: 30kg - 3 hinges

FIXING

- Fastening screws NOT supplied.**
- Pop rivets are not recommended.

FINISH

- Satin finish Stainless Steel.



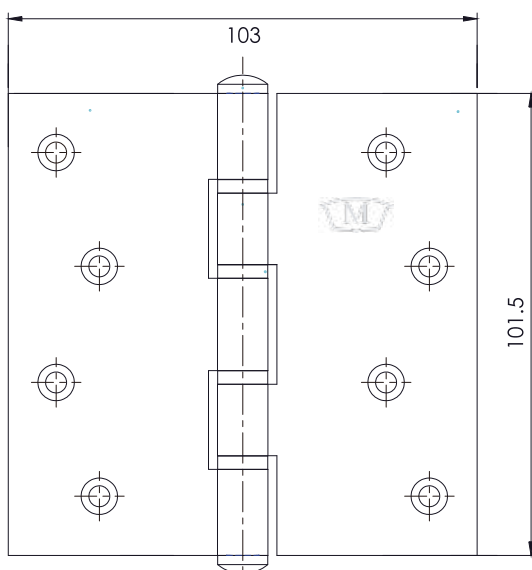
Code No. S 275

STAINLESS STEEL BUTT HINGE

Code No. S 278

APPLICATION

- Suitable for aluminium and timber doors with aluminium, steel and timber frames.



SPECIFICATION

- **Material:** Stainless Steel **304** Grade.
- **Pin Dia:** 6.9mm - Stainless Steel **304** Grade.
- **Knuckle:** Round.
- **Endcaps:** Pressed-in interference fit. Stainless Steel **304** Grade.
- Stamped with McCallum crest.
- Four washers.

INSTALLATION GUIDE ONLY

- **Door thickness: Minimum 32mm.**
- When using a door closer, we recommend a minimum of 4 hinges be used, with the top hinge located as high as possible.
- Standard Door: 2040 (H) x 820 (W) - 3 hinges.
- Maximum Weight Capacity: 30kg - 3 hinges

FIXING

- 32mm x 10g stainless steel fasteners for timber (supplied).
- Pop rivets are not recommended.
- Not recommended for Bi-Fold door systems.

FINISH

- Satin finish.

Code No. S 278

STAINLESS STEEL BUTT HINGE

Code No. S 279

APPLICATION

- Suitable for aluminium and timber doors with aluminium, steel and timber frames.

SPECIFICATION

- **Material:** Stainless Steel **304** Grade.
- **Pin Dia:** 6.9mm - Stainless Steel **304** Grade.
- **Knuckle:** Round.
- **Endcaps:** Pressed-in interference fit. Stainless Steel **304** Grade.
- Stamped with McCallum crest.
- Four washers.

INSTALLATION GUIDE ONLY

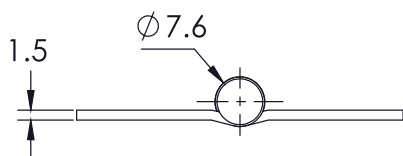
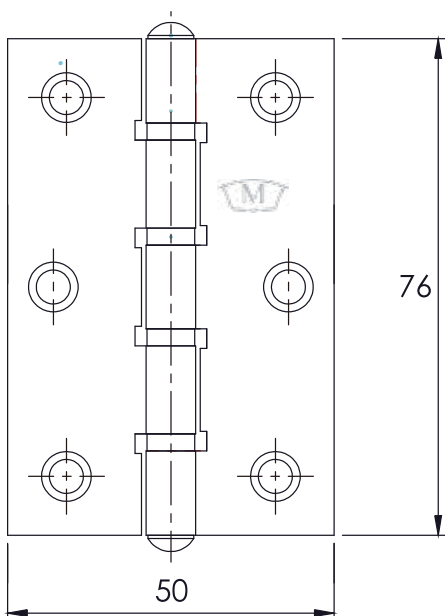
- **Door thickness: Minimum 32mm.**
- When using a door closer, we recommend a minimum of 4 hinges be used, with the top hinge located as high as possible.
- Standard Door: 2040 (H) x 820 (W) - 3 hinges.
- Maximum Weight Capacity: 20kg - 3 hinges

FIXING

- 32mm x 10g stainless steel fasteners for timber (supplied).
- Pop rivets are not recommended.
- Not recommended for Bi-Fold door systems.

FINISH

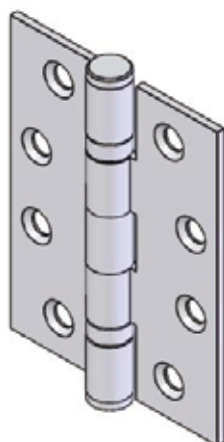
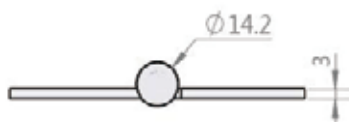
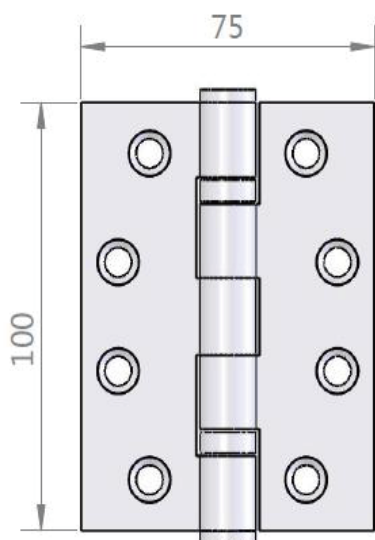
- Satin finish.



Code No. S 279

STAINLESS STEEL BUTT HINGE

Code No. S265--100mm



APPLICATION

- Suitable for aluminium and timber doors with aluminium, steel and timber frames.

SPECIFICATION

- Material: Stainless Steel 304 Grade.
- Pin Dia: 7.9mm - 304 Grade Stainless Steel.
- Knuckle: Round
- Endcaps: Pressed-in interference fit. Stainless Steel 304 Grade.
- Stamped with M^cCallum crest.
- Fixed Pin.
- Bearings: 2 Stainless Steel Off-Cage Ball Bearings.

INSTALLATION GUIDE ONLY

- Door thickness: Minimum 35mm.
- When using a door closer, we recommend a minimum of 4 hinges be used, with the top hinge located as high as possible.
- Standard Door: 2040 (H) x 820 (W)- 3 hinges.
- Maximum Weight Capacity: 80kg - 3 hinges

FIXING

- 32mm x 10g stainless steel fasteners for timber (supplied).
- 12mm x M5 stainless steel metal fasteners (supplied).
- Pop rivets are not recommended.
- Not recommended for Bi-Fold door systems.

FINISH

- Satin finish and Polished stainless steel and Black.

SPECIAL NOTE

- The S224 meets the UK and the Council of European Communities standard for Pedestrian access doors, including fire and smoke door. The EC certificate of Conformity is 359-CPD-0043 / EN 1935 : 2002 / AC : 2003

Code No. S265

STAINLESS STEEL BUTT HINGE

Code No. S266--100mm

APPLICATION

- Suitable for aluminium and timber doors with aluminium, steel and timber frames.

SPECIFICATION

- Material: Stainless Steel 304 Grade.
- Pin Dia: 7.9mm - 304 Grade Stainless Steel.
- Knuckle: Round
- Endcaps: Pressed-in interference fit. Stainless Steel 304 Grade.
- Stamped with M^cCallum crest.
- Fixed Pin.

INSTALLATION GUIDE ONLY

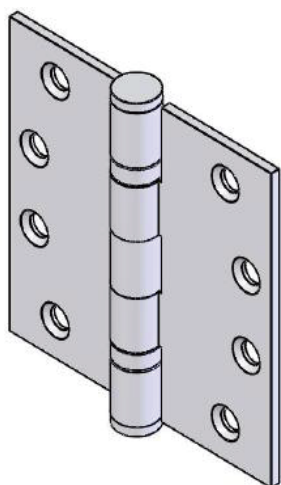
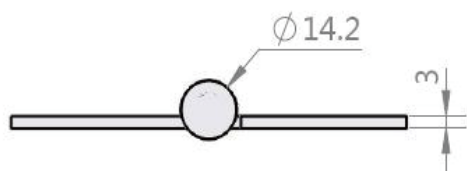
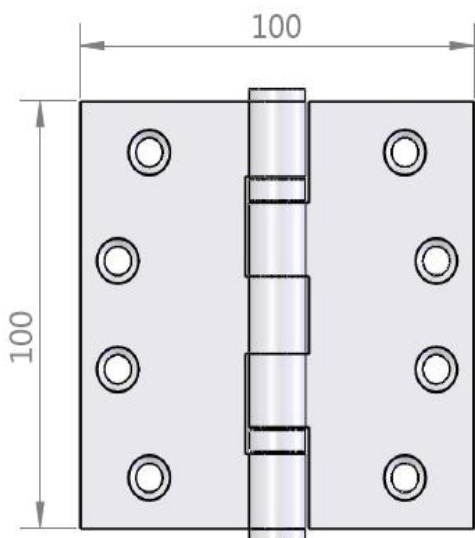
- Door thickness: Minimum 35mm.
- When using a door closer, we recommend a minimum of 4 hinges be used, with the top hinge located as high as possible.
- Standard Door: 2040 (H) x 820 (W)- 3 hinges.
- Maximum Weight Capacity: 80kg - 3 hinges

FIXING

- 32mm x 10g stainless steel fasteners for timber (supplied).
- 12mm x M5 stainless steel metal fasteners (supplied).
- Pop rivets are not recommended.
- Not recommended for Bi-Fold door systems.

FINISH

- Satin finish and Polished stainless steel and Black.



Code No.S266

STAINLESS STEEL BUTT HINGE

Code No. S267--100mm

APPLICATION

- Suitable for timber doors in medium usage situations.
- Th S267 may be more suitable for timber because the fixing holes on the large leaf are further away from the timber edge.
- Offset Knuckle

SPECIFICATION

- Material: Stainless Steel 304 Grade.
- Pin Dia: 6.9mm - Stainless Steel 304 Grade.
- Knuckle: Round
- Endcaps: Pressed-in interference fit. Stainless Steel 304 Grade.
- Stamped with M^cCallum crest.

INSTALLATION GUIDE ONLY

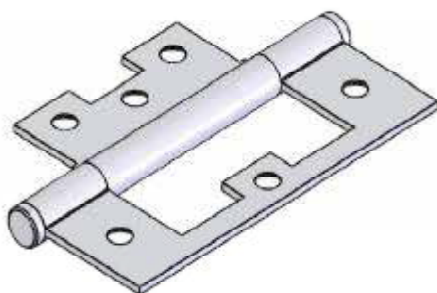
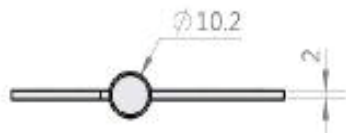
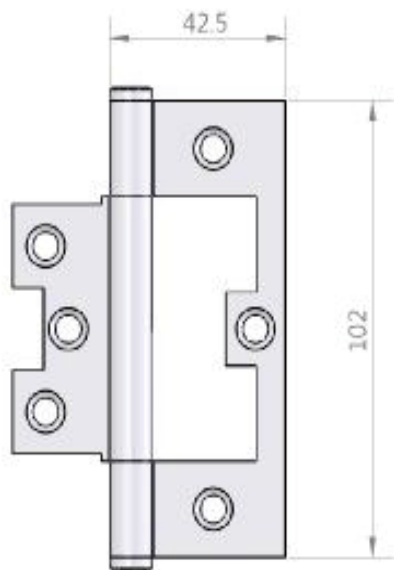
- Door thickness: Minimum 35mm.
- When using a door closer, we recommend a minimum of 3 hinges be used, with the top hinge located as high as possible.
- Standard Door: 2040 (H) x 820 (W)- 3 hinges.
- Maximum Weight Capacity: 20kg - 3 hinges

FIXING

- Fastening screws supplied
- Pop rivets are not recommended.

FINISH

- Satin finish stainless steel and Black.



Code No.S267

STAINLESS STEEL BUTT HINGE

Code No. S268--100mm

APPLICATION

- Suitable for aluminium & timber doors with aluminium, steel and timber frames.

SPECIFICATION

- Material: Stainless Steel 304 Grade.
- Pin Dia: 6.9mm - Stainless Steel 304 Grade.
- Knuckle: Round
- Endcaps: Pressed-in interference fit. Stainless Steel 304 Grade.
- Stamped with M^cCallum crest.
- Fixed Pin.

INSTALLATION GUIDE ONLY

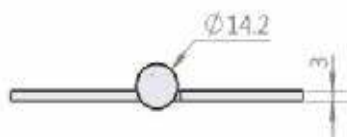
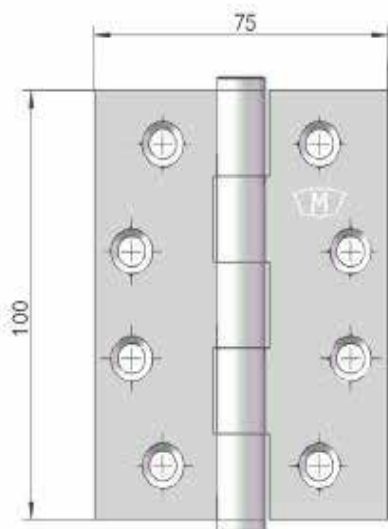
- Door thickness: Minimum 35mm.
- When using a door closer, we recommend a minimum of 4 hinges be used, with the top hinge located as high as possible.
- Standard Door: 2040 (H) x 820 (W)- 3 hinges.
- Maximum Weight Capacity: 80kg - 3 hinges

FIXING

- 32mm X 10g stainless steel fasteners for timber(supplied).
- 12mm x M5 stainless steel metal fasteners(supplied).
- Pop rivets are not recommended.
- Not recommended for Bi-Fold door systems.

FINISH

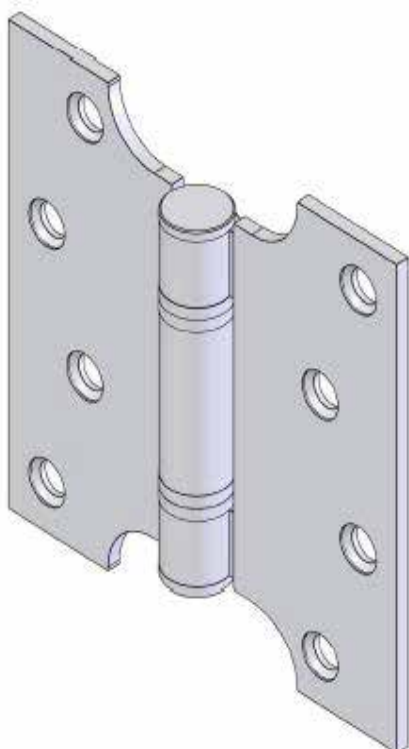
- Satin finish and Polished stainless steel and Black.



Code No.S268

STAINLESS STEEL PARLIAMENT HINGE

Code No. S289, S290, S292, S293



APPLICATION

- Projects doors clear of architraves, window boards or down pipes.

SPECIFICATION

- Material 304/316 Grade
- Knuckle: Round - 142mm dia Stainless steel end cap

INSTALLATION GUIDE ONLY

- Max width: 2040(H)x820(W)mm
- Max weight: 120 kg

FIXING

- Screws supplied

FINISH

- Polish finish and satin finish available.

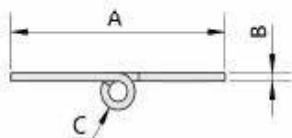
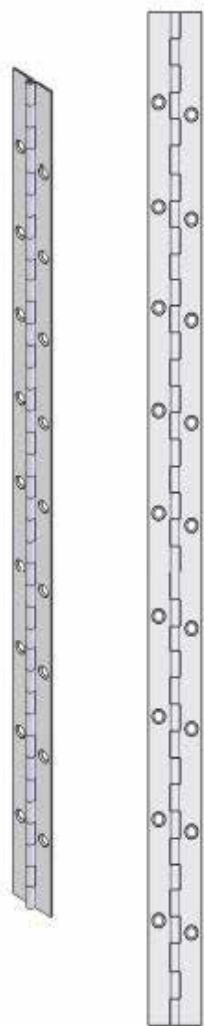
SIZES AVAILABLE

- Code S289 100x150x3.5mm
- Code S290 100x175x3.5mm
- Code S292 75x125x3.5mm
- Code S293 125x175x3.5mm

Code No. S289, S290, S292, S293

PIANO HINGE

Code No. S301, S302, S303, S304, S305



APPLICATION

- Full height hinge for door
- Low distribution across entire door height
- Increased security
- Suitable for low, medium and high duty applications

SPECIFICATION

- Material 304/316 Grade/metal available
- Knuckle: Round

INSTALLATION GUIDE ONLY

- Light & Heavy Gauges both available

FIXING

- Plain / drilling hole available

FINISH

- Satin finish or passivated

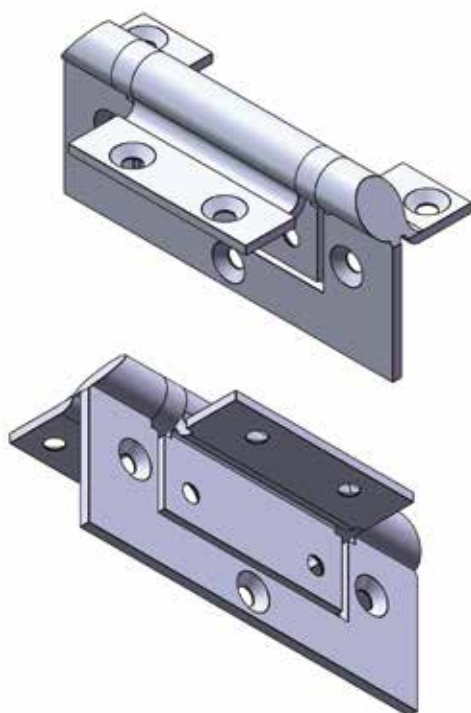
SIZES AVAILABLE

- Code S301 29x1.0x1830
- Code S302 32x1.0x1830
- Code S303 38x1.0x1830
- Code S304 51x1.6x1830
- Code S305 76x1.6x1830

Code No. S301, S302, S303, S304, S305

STAINLESS STEEL ANTI LIGATURE HINGE

Code No. S263AL



APPLICATION

- Suitable for aluminium glazed external or internal doors
- Suitable for either centre pocket or front edge glazing systems
- Ideally suited for use internal doors in Care facilities, Hospitals, Public buildings, etc
- Suitable for some timber doors in aluminium frames

SPECIFICATION

- Hinge Type: Stainless Steel Interleaf Hinge
- Material: Stainless Steel 304 grade
- Hinge Pin: 6.9mm Diameter 304 grade Stainless Steel
- Bearing: Stainless Steel – Cage & Bearing
- Knuckle: Round
- Endcaps: Anti Ligature
- Maximum Weight Capacity: 50kg - 3 Hinges

FIXING

- Fastening screws supplied
- Aluminium fixings: 10G x 13mm, SS undercut countersunk self-tapping Phillips drive screw
- Pop Rivets are NOT RECOMMENDED

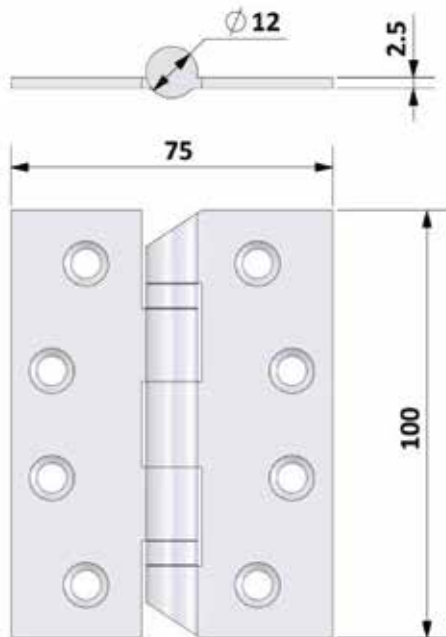
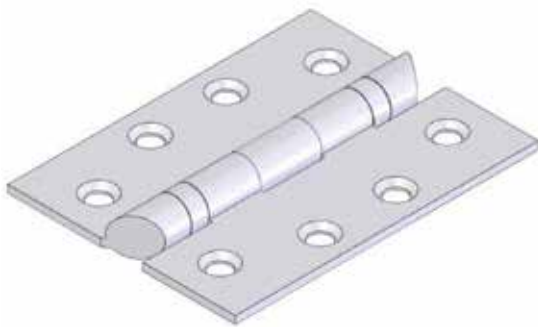
FINISH

- SSS: Satin Stainless Steel
- PSS: Polished Stainless Steel
- BLK: Black

Code No. S263AL

STAINLESS STEEL ANTI LIGATURE HINGE

Code No. S224AL



APPLICATION

- Suitable for timber or metal door installed to timber or metal jambs/frames
- Ideally suited for use internal doors in Care facilities, Hospitals, Public buildings, etc

SPECIFICATION

- Hinge Type: Ball Bearing Butt Hinge
- Bearing: Stainless Steel – Cage & Bearing
- Material: Stainless Steel 304 grade
- Hinge Pin: 6.9mm Diameter Stainless Steel 304 grade
- Bearing: Stainless Steel – Cage & Bearing
- Knuckle: Anti Ligature Round
- Fixing Holes: Industry Standard hole pattern to suit pressed metal frames

INSTALLATION GUIDE ONLY

- Minimum Door Thickness 35mm
- Suitable for Timber doors with Timber or Metal frames
- Standard Door: 2040 (H) x 820 (W) - 3 Hinges
- Maximum Weight Capacity: 60 kg - 3 Hinges
- When using a door closing device, we recommend using an additional hinge

FIXING

- Fastening screws supplied
- Metal fixings – M5 x 12.5mm, Countersunk Phillips Stainless Steel metal screw
- Timber fixings – 10G x 32mm SS type AB self-tapping Phillips drive screw

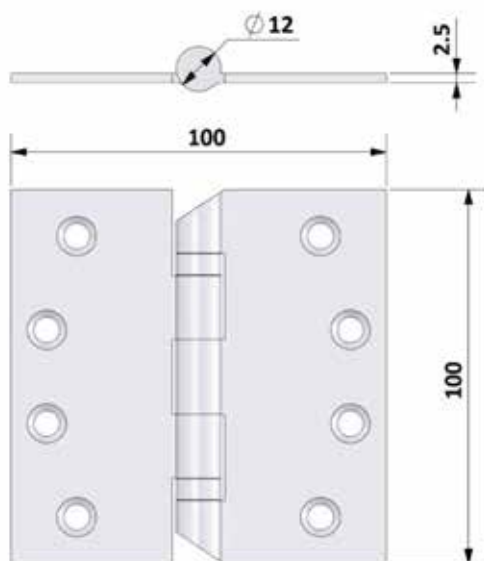
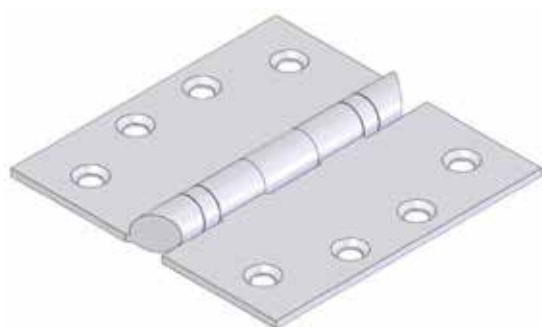
FINISH

- SSS: Satin Stainless Steel
- PSS: Polished Stainless Steel
- BLK: Black

Code No.S224AL

STAINLESS STEEL ANTI LIGATURE HINGE

Code No. S234AL



APPLICATION

- Suitable for timber or metal door installed to timber or metal jambs/frames
- Ideally suited for use internal doors in Care facilities, Hospitals, Public buildings, etc

SPECIFICATION

- Hinge Type: Ball Bearing Butt Hinge
- Bearing: Stainless Steel – Cage & Bearing
- Material: Stainless Steel 304 grade
- Hinge Pin: 6.9mm Diameter Stainless Steel 304 grade
- Bearing: Stainless Steel – Cage & Bearing
- Knuckle: Anti Ligature Round
- Fixing Holes: Industry Standard hole pattern to suit pressed metal frames

INSTALLATION GUIDE ONLY

- Minimum Door Thickness 35mm
- Suitable for Timber doors with Timber or Metal frames
- Standard Door: 2040 (H) x 820 (W) - 3 Hinges
- Maximum Weight Capacity: 60 kg - 3 Hinges
- When using a door closing device, we recommend using an additional hinge

FIXING

- Fastening screws supplied
- Metal fixings – M5 x 12.5mm, Countersunk Phillips Stainless Steel metal screw
- Timber fixings – 10G x 32mm SS type AB self-tapping Phillips drive screw

FINISH

- SSS: Satin Stainless Steel
- PSS: Polished Stainless Steel
- BLK: Black

Code No.S234AL